

(JERID5.JERID) 18032

JERID FIVE DEPARTURE (RNAV)

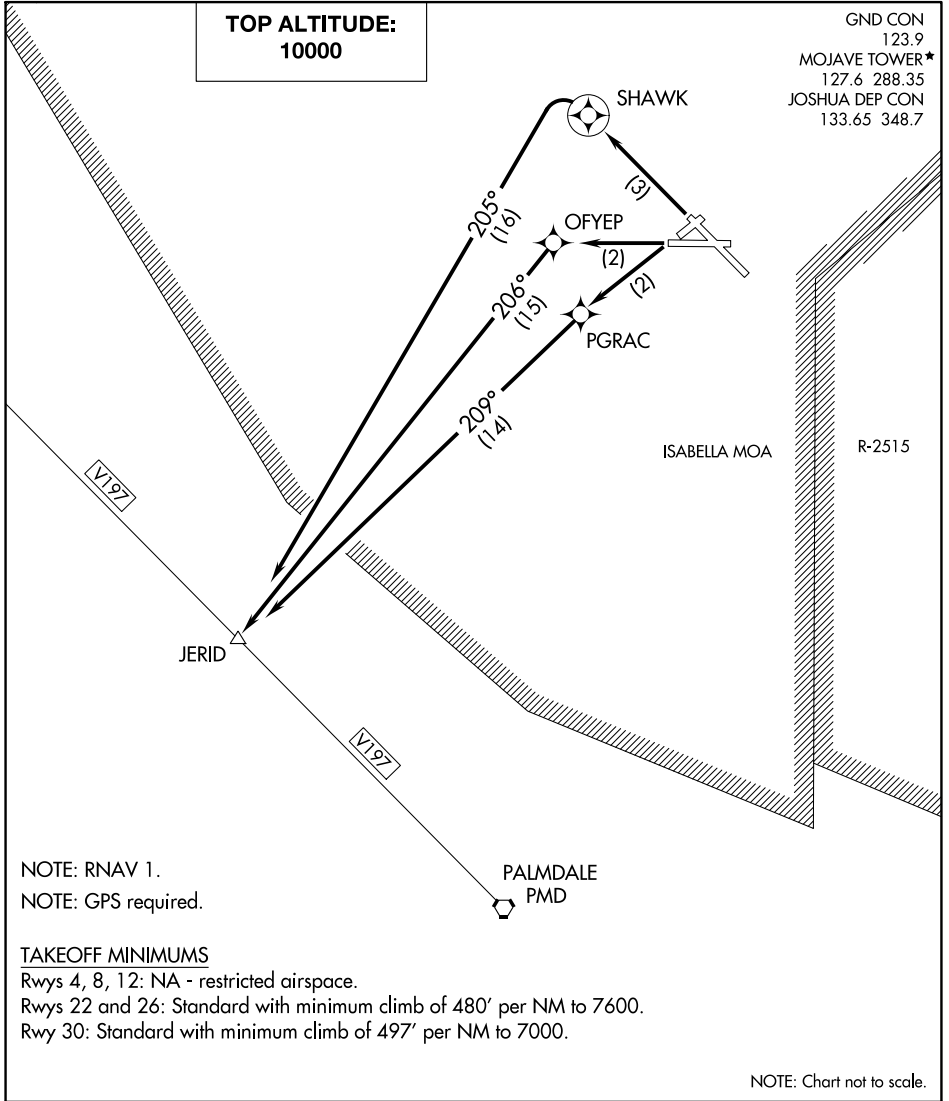
AL-9353 (FAA)

MOJAVE AIR AND SPACE PORT (MHV)

MOJAVE, CALIFORNIA

**TOP ALTITUDE:
10000**

GND CON 123.9
MOJAVE TOWER* 127.6 288.35
JOSHUA DEP CON 133.65 348.7



SW-3, 09 SEP 2021 to 07 OCT 2021

SW-3, 09 SEP 2021 to 07 OCT 2021

NOTE: RNAV 1.
NOTE: GPS required.

TAKEOFF MINIMUMS

Rwys 4, 8, 12: NA - restricted airspace.
Rwys 22 and 26: Standard with minimum climb of 480' per NM to 7600.
Rwy 30: Standard with minimum climb of 497' per NM to 7000.

NOTE: Chart not to scale.

DEPARTURE ROUTE DESCRIPTION

TAKEOFF RUNWAY 22: Climb direct PGRAC, then on track 209° to JERID, thence. . . .
TAKEOFF RUNWAY 26: Climb direct OFYEP, then on track 206° to JERID, thence. . . .
TAKEOFF RUNWAY 30: Climb direct SHAWK, then climbing left turn on track 205° to JERID, thence. . . .
. . . .maintain 10000, expect filed altitude 10 minutes after departure.

JERID FIVE DEPARTURE (RNAV)

(JERID5.JERID) 15SEP16

MOJAVE, CALIFORNIA
MOJAVE AIR AND SPACE PORT (MHV)