

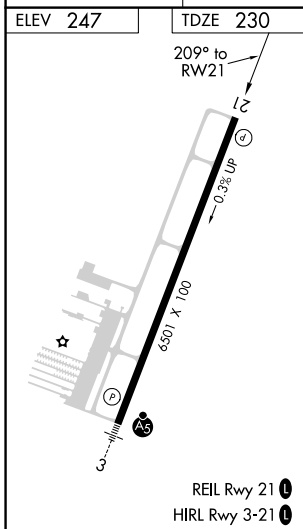
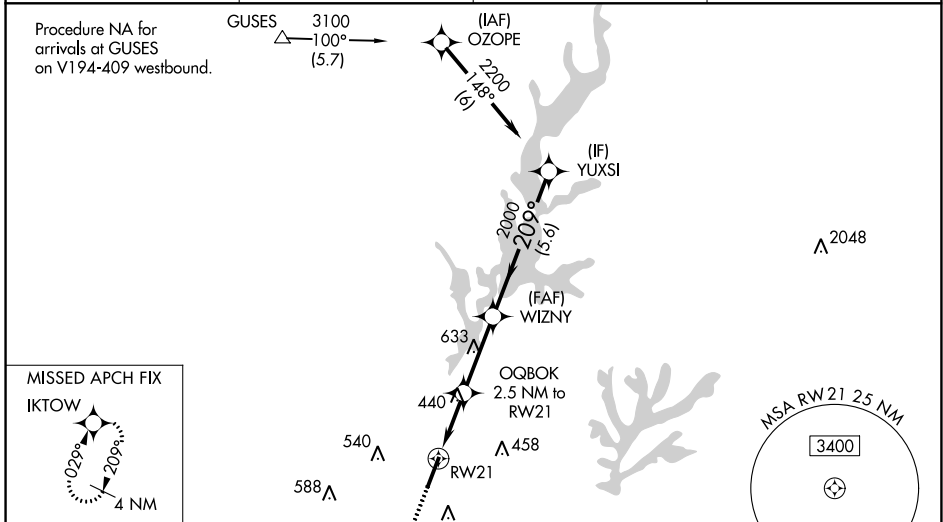
WAAS CH 86522 W21A	APP CRS 209°	Rwy Idg TDZE Apt Elev	6501 230 247
--	------------------------	-----------------------------	---

RNAV (GPS) RWY 21

RALEIGH EXECUTIVE JETPORT AT SANFORD-LEE COUNTY (TTA)

RNP APCH.	<p>Baro-VNAV NA when using Raleigh/Durham altimeter setting. For uncompensated Baro-VNAV systems, LNAV/VNAV NA below -15°C or above 54°C. When local altimeter setting not received, use Raleigh/Durham altimeter setting and increase all DA 81 feet and all MDA 100 feet. Increase LPV all Cts visibility to 1¼ SM, LNAV/VNAV all Cts visibility to 1½ SM, LNAV Cts C and D visibility to 1½ SM, and Circling Cat C visibility to 2 SM and Cat D visibility to 2¾ SM. Rwy 21 helicopter visibility reduction below ¾ SM NA. VDP NA when using Raleigh/Durham altimeter setting.</p>	MISSED APPROACH: Climb to 2100 direct IKTOW and hold.
-----------	---	---

AWOS-3 120.625	RALEIGH APP CON 125.3 353.675	UNICOM 123.075 (CTAF) 0	GCO 135.075
--------------------------	---	-----------------------------------	-----------------------



ELEV 247	TDZE 230	<p>2100 IKTOW VGSI and RNAV glidepath not coincident (VGSI Angle 3.00/TCH 40).</p> <p>*LNAV only.</p> <p>OGBOK 2.5 NM to RWY 21</p> <p>WIZNY 2000</p> <p>YUXSI 2200</p> <p>*1.4 NM to RWY 21</p> <p>*1060</p> <p>2000</p> <p>GP 3.00° TCH 45</p>			
		1.4 NM	1.1 NM	2.9 NM	5.6 NM
CATEGORY	A	B	C	D	
LPV DA	530-1		300 (300-1)		
LNAV/VNAV DA	518-7/8		288 (300-7/8)		
LNAV MDA	700-1	470 (500-1)	700-1¾	470 (500-1¾)	
C CIRCLING	760-1 513 (600-1)	820-1 573 (600-1)	840-1½ 593 (600-1½)	960-2¼ 713 (800-2¼)	

SE-2, 09 SEP 2021 to 07 OCT 2021

SE-2, 09 SEP 2021 to 07 OCT 2021