

WAAS CH <b>58324</b> <b>W12A</b>	APP CRS <b>138°</b>	Rwy Idg TDZE Apt Elev	<b>6901</b> <b>2022</b> <b>2032</b>
--	------------------------	-----------------------------	---

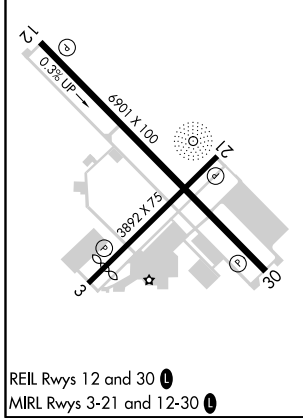
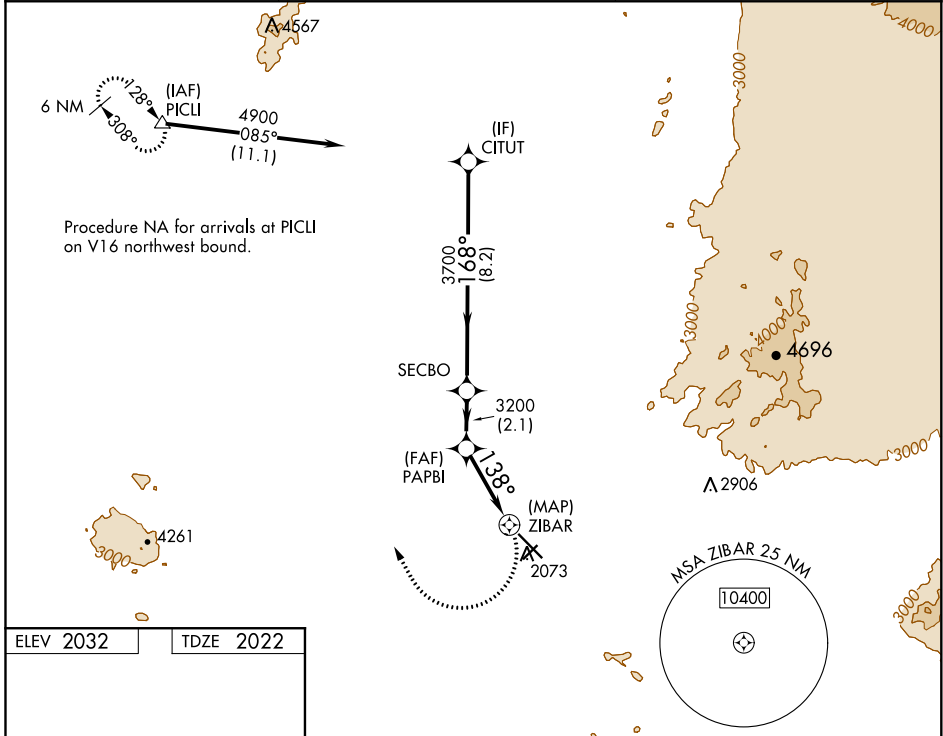
# RNAV (GPS) RWY 12

MARANA RGNL (AVQ)

**NA** DME/DME RNP-0.3 NA. When local altimeter setting not received, use Ryan Fld altimeter setting and increase all MDA 100 feet, increase LP and LNAV Cat C visibility ¼ SM and Circling Cat C visibility ½ SM.

MISSED APPROACH: Climbing right turn to 6500 direct PICLI and hold, continue climb-in-hold to 6500.

AWOS-3 <b>118.375</b>	TUCSON APP CON <b>119.4 318.1</b>	UNICOM <b>123.0 (CTAF)</b>
--------------------------	--------------------------------------	-------------------------------



CITUT		SECBO		PABPI		ZIBAR		6500	PICLI
4900		3700		3200		2073		↷	△
8.2 NM		2.1 NM		3.1 NM		0.5 NM			
CATEGORY	A	B	C	D					
LP MDA	2420-1	398 (400-1)	2420-1½	398 (400-1½)					
LNAV MDA	2440-1	418 (500-1)	2440-1¼	418 (500-1¼)					
CIRCLING	2440-1	2540-1	2680-1¾	648 (700-1¾)					
	408 (500-1)	508 (600-1)							

SW-4, 09 SEP 2021 to 07 OCT 2021

SW-4, 09 SEP 2021 to 07 OCT 2021