

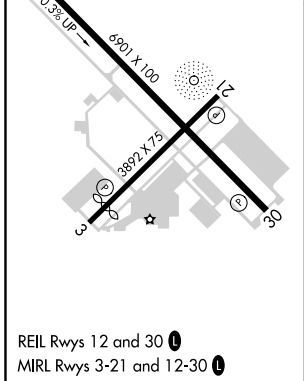
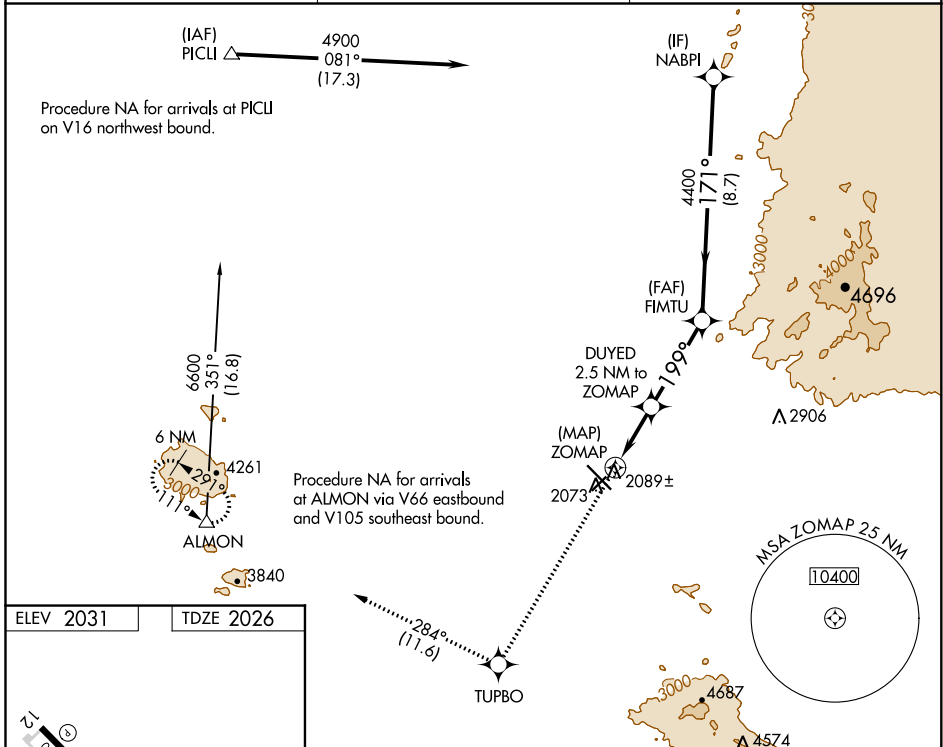
WAAS CH 56325 W21A	APP CRS 199°	Rwy Idg TDZE Apt Elev	3892 2026 2031
--	------------------------	-----------------------------	---

RNAV (GPS) RWY 21

MARANA RGNL (AVQ)

RNP APCH.	<p>▼ Rwy 21 helicopter visibility reduction below 1 SM NA. When local altimeter setting not received, use Ryan Fld altimeter setting and increase all MDAs 100 feet, increase LP Cat C visibility 1/8 SM and increase LNAV Cat C visibility 1/4 SM.</p>	<p>MISSED APPROACH: Climb to 6700 direct TUPBO and on track 284° to ALMON and hold, continue climb-in-hold 6700.</p>
▲ NA		

AWOS-3 118.375	TUCSON APP CON 119.4 318.1	UNICOM 123.0 (CTAF) 0
--------------------------	--------------------------------------	---------------------------------



6700	TUPBO	tr 284°	ALMON	VGSI and descent angles not coincident (VGSI Angle 3.00/TCH 40).
				NABPI
			FIMTU	
			DUYED 2.5 NM to ZOMAP	≤ 3.35° TCH 40
			ZOMAP	199° 4400
				171° 4900
				3120
				0.5 2.5 NM 3.6 NM 8.7 NM
CATEGORY	A	B	C	D
LP MDA	2340-1 314 (400-1)			NA
LNAV MDA	2640-1	614 (700-1)	2640-1 3/4 614 (700-1 3/4)	NA

SW-4, 09 SEP 2021 to 07 OCT 2021

SW-4, 09 SEP 2021 to 07 OCT 2021