

WAAS CH 63000 W30A	APP CRS 300°	Rwy Idg 3482 TDZE 5 Apt Elev 5
--	------------------------	---

RNAV (GPS) RWY 30

MUSTANG BEACH (R.A.S)

⚠ DME/DME RNP-0.3 NA. For uncompensated Baro-VNAV systems, LNAV/VNAV NA below -1.5°C (5°F) or above 44°C (111°F). If local altimeter setting not received, use Corpus Christi Intl altimeter setting and increase all DAs/MDAs 60 feet. Baro-VNAV and VDP NA when using Corpus Christi Intl altimeter setting.

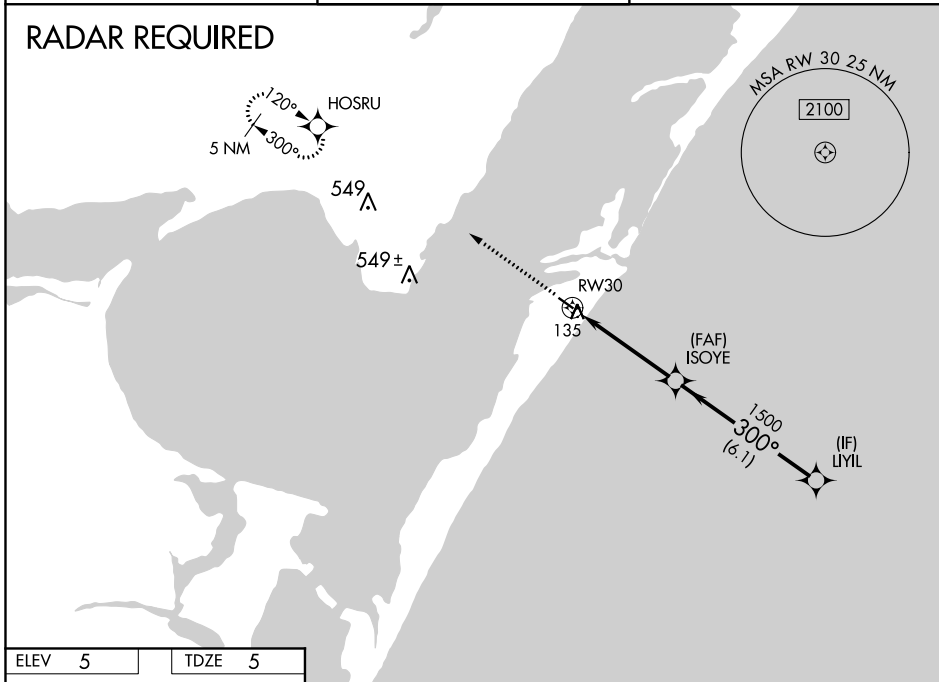
MISSED APPROACH: Climb to 2000 direct HOSRU and hold.

AWOS-3
118.425

CORPUS CHRISTI APP CON
125.4 307.9

CTAF
122.9

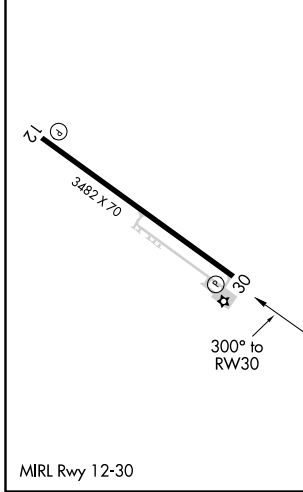
RADAR REQUIRED



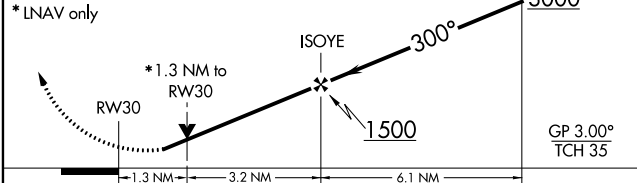
SC-3, 09 SEP 2021 to 07 OCT 2021

SC-3, 09 SEP 2021 to 07 OCT 2021

ELEV 5	TDZE 5
--------	--------



2000 HOSRU
 ↑ ✦
 VGSI and RNAV glidepath not coincident (VGSI Angle 3.20/TCH 22).
 Procedure Turn NA



CATEGORY	A	B	C	D
LPV DA	362-1¼	357 (400-1¼)		NA
LNAV/VNAV DA	435-1½	430 (500-1½)		NA
LNAV MDA	440-1	435 (500-1)		NA
CIRCLING	500-1	495 (500-1)		NA