

TACAN LKI Chan 11	APCH CRS 087°	Rwy ldg 10,062 THRE 1428 Arprt Elev 1428
----------------------	------------------	--

JAL-125 [USAF]

DULUTH INTL (KDLH)

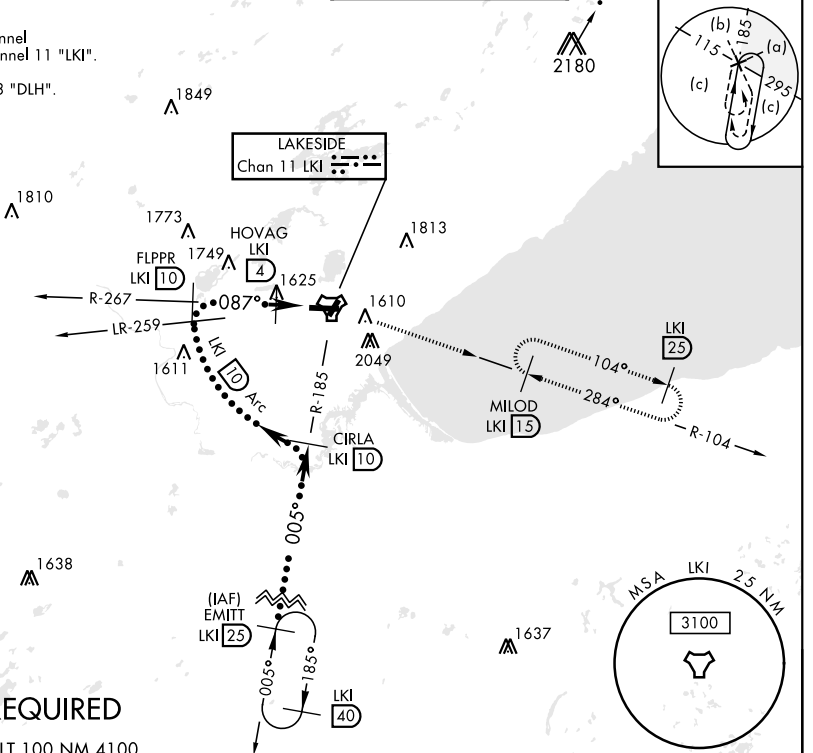
▽ * When ALS inop, increase CAT E vis to 1 3/8 miles.
 ** Circling NA for CAT E SE of Rwy 3 and 27.



MISSED APPROACH: Climb to 2500 then
 climbing right turn to 4000 via LKI TACAN
 R-104 to MILOD (1.5 DME) and hold.

ATIS 124.1 270.1	DULUTH APP CON 125.45 233.7	DULUTH TOWER 118.3 257.8	GND CON 121.9 348.6
---------------------	--------------------------------	-----------------------------	------------------------

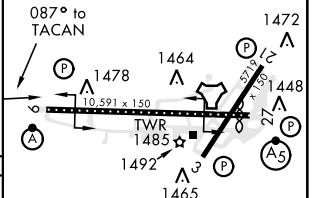
CAUTION:
 Do not select channel
 73 "DLH" for channel 11 "LKI".
 Towers 2049" on
 R-099 channel 73 "DLH".



RADAR REQUIRED

EMERG SAFE ALT 100 NM 4100

	2500	4000	MILOD LKI 15	ELEV 1428	THRE 1428
		LKI R-104		Rwy 9 ldg 10,062'	Rwy 27 ldg 10,062'
	EMITT R-185 25	CIRLA R-185 10	FLPPR R-267 10		
	FL180	HOVAG 4	IWYYES 27	TACAN	
	005°	087°	2300		
	4000	4000			
	3.00° TCH 50	Arc 10			
CATEGORY	C	D	E		
S-9 *	1880/45	452	(500-1)		
CIRCLING **	1920-1 1/2 492 (500-1 1/2)	1980-2 552 (600-2)	2060-2 1/4 632 (700-2 1/4)		



TDZL/CL Rwy 9-27
 REIL Rwy 3 and 21
 HIRL Rwy 3-21 and 9-27

NC-1, 07 OCT 2021 to 04 NOV 2021

NC-1, 07 OCT 2021 to 04 NOV 2021