

ILS RWY 6 (CAT II)

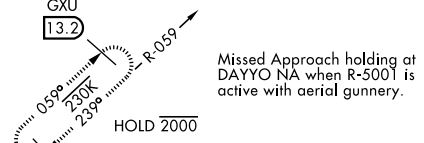
MC GUIRE FLD,

AL-150 [USAF]

(JOINT BASE MC GUIRE DIX LAKEHURST) (KWRI)

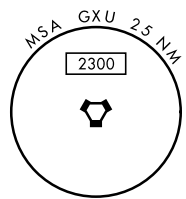
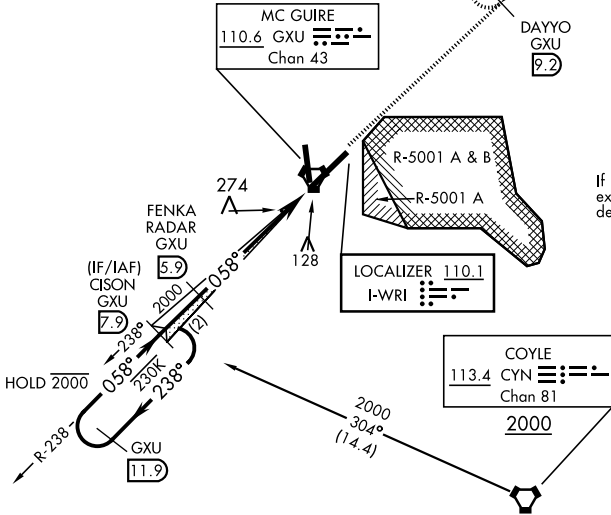
LOC I-WRI 110.1	APCH CRS 058°	Rwy Idg 10,014 TDZE 131 Arprt Elev 141	AL-150 [USAF] (JOINT BASE MC GUIRE DIX LAKEHURST) (KWRI)	
RADAR or DME required to identify the FAF.			ALSF-2	MISSED APPROACH: Climb to 2000 via GXU R-059 to DAYYO and hold. Alternate Missed Approach instructions: Climb to 2000 via GXU R-059 to DAYYO, expect further clearance from ATC.
ATIS 110.6 270.1	MC GUIRE APP CON 126.475 363.8	MC GUIRE TOWER 118.65 255.6	GND CON 121.8 275.8	CLNC DEL 135.2 335.8
		PAR		

CATEGORY II ILS - SPECIAL AIRCREW & AIRCRAFT CERTIFICATION REQUIRED



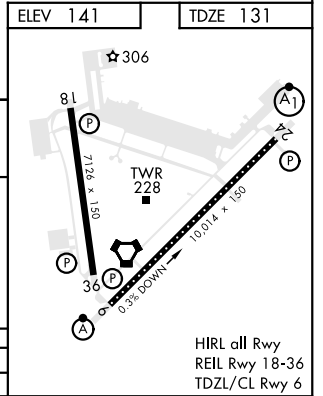
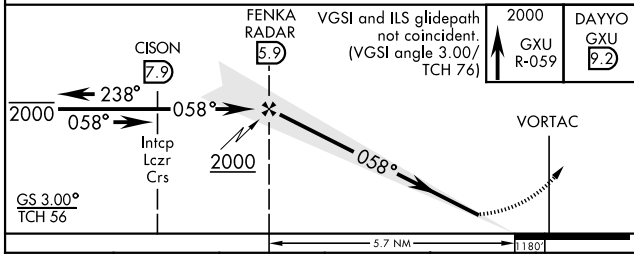
RADAR REQUIRED WHEN R-5001 IS ACTIVE

If RADAR inoperative, expect 15 min delay for deactivation of R-5001.



RADAR required for holding above 2000 and/or > than 230 KIAS.

EMERG SAFE ALT 100 NM 5100 FROM GXU VORTAC



CATEGORY	A	B	C	D	E
S-ILS 6		RA 91/12	100	DA 231	

HIRL all Rwy
REIL Rwy 18-36
TDZL/CL Rwy 6

ILS RWY 6 (CAT II)

NE-2, 07 OCT 2021 to 04 NOV 2021

NE-2, 07 OCT 2021 to 04 NOV 2021