

LOC I-JTQ 110.1	APCH CRS 238°	Rwy ldg TDZE 10,014 117	Arpt Elev 141
---------------------------	-------------------------	-----------------------------------	-------------------------

AL-150 (USAF)
MC GUIRE FIELD (JOINT BASE MC GUIRE DIX LAKEHURST) (KWRI)

* When ALS inop, increase RVR to 40, vis to 3/4 mile.
 ** When ALS inop, increase CAT AB RVR to 55, vis to 1 mile, CAT CDE vis to 1 3/8 miles.
 *** Circling NA SE of Rwy 24 and E of Rwy 36 when R-5001 A/B Active.

ALSF-1 MISSED APPROACH: Climb to 2000 via GXU R-236 to CISON and hold.

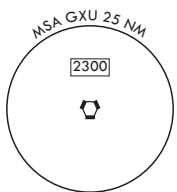
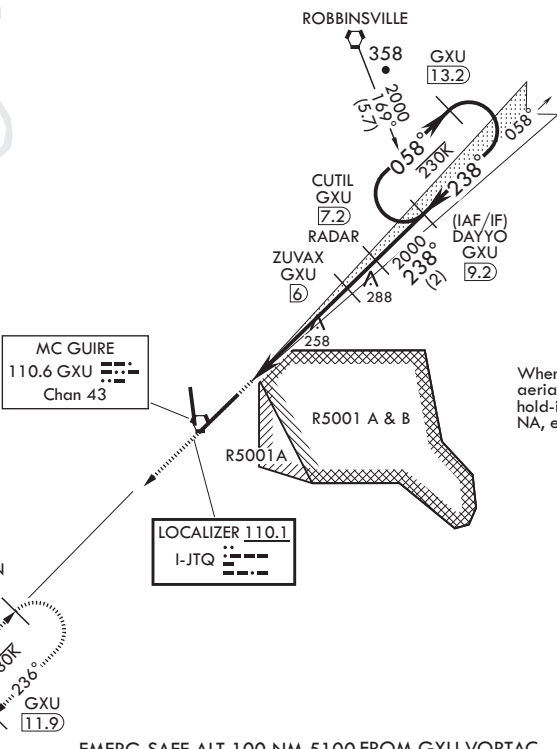
ATIS 110.6 270.1	MC GUIRE APP CON 126.475 363.8	TOWER 118.65 255.6	GND CON 121.8 275.8	CLNC DEL 135.2 335.8	PAR
----------------------------	--	------------------------------	-------------------------------	--------------------------------	-----

RADAR or DME required to identify the FAF.

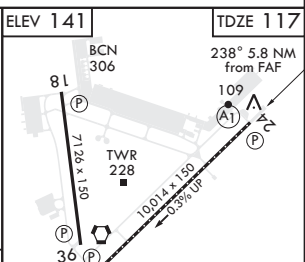
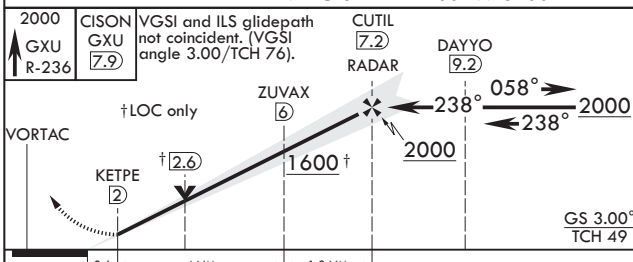
 RADAR required when R-5001 is active.

 RADAR required for holding above 2000 and/or > 230 KIAS.

 If RADAR inoperative, expect 15 min delay for deactivation of R-5001.



EMERG SAFE ALT 100 NM 5100 FROM GXU VORTAC



2000 GXU R-236	CISON GXU (7.9)	VGSI and ILS glidepath not coincident. (VGSI angle 3.00/TCH 76).	CUTIL (7.2) RADAR	DAYYO (9.2)	ELEV 141	TDZE 117
VORTAC		† LOC only	ZUVAX (6)	238° 058°	238° 5.8 NM from FAF	
KETPE (2)		† 2.6	1600 †	2000	TWR 228	
0.6		4 NM	1.2 NM	GS 3.00° TCH 49	1001.1 x 150 0.3% UP	
CATEGORY	A	B	C	D	E	
S-ILS 24*	317/24		200	(200-½)		
S-LOC 24**	560/24	443 (500-½)	560/45	443	(500-¾)	
CIRCLING***	680-1	539 (600-1)	700-1½ 559 (600-1½)	700-2 559 (600-2)	1200-3 1059 (1100-3)	
HIRL all Rwys REIL Rwys 18, 36 TDZL/CL Rwy 6						
FAF to MAP 5.2 NM						
Knots 60 90 120 150 180						
Min:Sec 5:12 3:28 2:36 2:05 1:44						

NE-2, 07 OCT 2021 to 04 NOV 2021

NE-2, 07 OCT 2021 to 04 NOV 2021