

ILS or LOC RWY 6

MC GUIRE FLD,

AL-150 [USAF] (JOINT BASE MC GUIRE DIX LAKEHURST) (KWRI)

LOC I-WRI 110.1	APCH CRS 058°	Rwy Idg 10,014 TDZE 131 Arpt Elev 141
---------------------------	-------------------------	--

RADAR or DME required to identify the FAF.

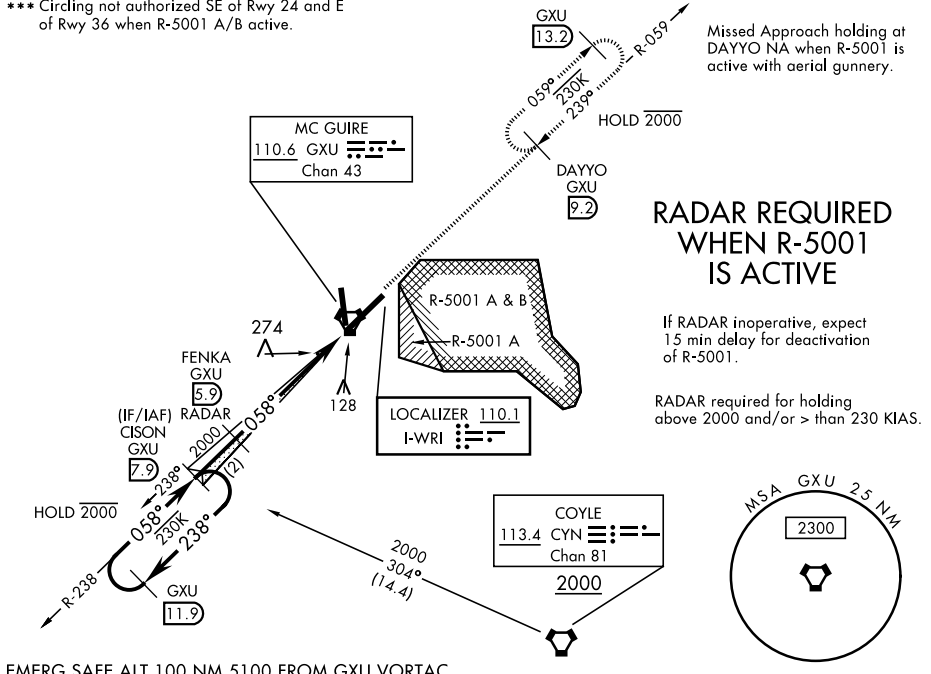
* When ALS inop, increase RVR to 40, vis to ¼ mile.
 * When TDZ/CL lights inop increase RVR to 24.
 ** When ALS inop, increase CAT AB RVR to 55, vis to 1 mile; CAT CDE RVR to 60, vis to 1½ miles.



MISSED APPROACH: Climb to 2000 via GXU R-059 to DAYYO and hold. Alternate Missed Approach Instruction: Climb to 2000 via GXU R-059 to DAYYO, expect further clearance from ATC.

ATIS 110.6 270.1	MC GUIRE APP CON 126.475 363.8	MC GUIRE TOWER 118.65 255.6	GND CON 121.8 275.8	CLNC DEL 135.2 335.8	PAR
----------------------------	--	---------------------------------------	-------------------------------	--------------------------------	-----

*** Circling not authorized SE of Rwy 24 and E of Rwy 36 when R-5001 A/B active.



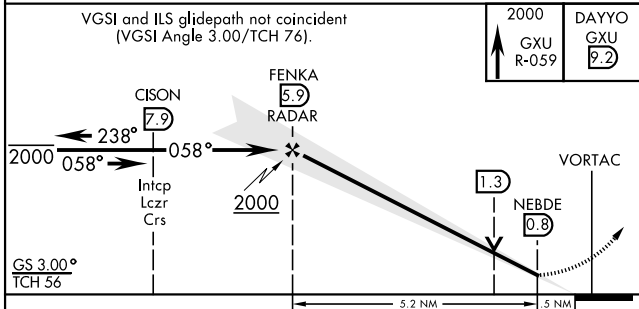
RADAR REQUIRED WHEN R-5001 IS ACTIVE

If RADAR inoperative, expect 15 min delay for deactivation of R-5001.

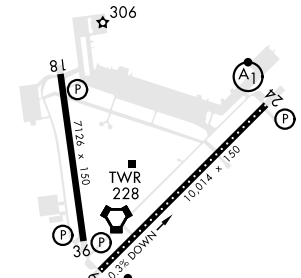
RADAR required for holding above 2000 and/or > than 230 KIAS.

EMERG SAFE ALT 100 NM 5100 FROM GXU VORTAC

VGSI and ILS glidepath not coincident (VGSI Angle 3.00/TCH 76).



ELEV 141	TDZE 131
----------	----------



CATEGORY	A	B	C	D	E
S-ILS 6*	331/18		200	(200-½)	
S-LOC 6**	540/24	409 (400-½)	540/40	409 (400-¾)	
CIRCLING ***	680-1	539 (600-1)	700-1½ 559 (600-1½)	700-2 559 (600-2)	1200-3 1059 (1100-3)

HIREL all rwys REIL Rwy 18-36 TDZL/CL Rwy 6	
FAF to MAP 5.2 NM	
Knots	60 90 120 150 180
Min:Sec	5:12 3:28 2:36 2:05 1:44

ILS or LOC RWY 6

NE-2, 07 OCT 2021 to 04 NOV 2021

NE-2, 07 OCT 2021 to 04 NOV 2021