

20030

POINT PLEASANT FIVE DEPARTURE (PTPL5 • MANTIA) WRIGHTSTOWN, NEW JERSEY

SHL-150 [USAF]

Chart not to scale  
(Continued on next page)

HAMPTON  
113.6 HTO  
Chan 83

SHLEP  
L-33-34, H-3-6

ROBBINSVILLE  
113.8 RBV  
Chan 85

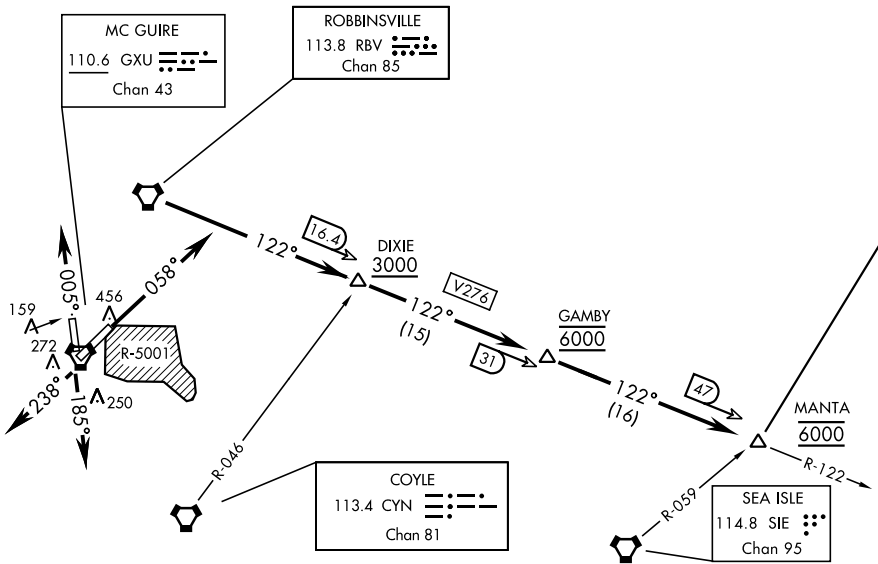
MC GUIRE  
110.6 GXU  
Chan 43

COYLE  
113.4 CYN  
Chan 81

SEA ISLE  
114.8 SIE  
Chan 95

# RADAR REQUIRED TO RBV R-122/16.4 DME (DIXIE)

ATIS 110.6 270.1  
CLINC DEL  
135.2 335.8  
GND CON  
121.8 275.8  
MC GUIRE TOWER  
118.65 255.6  
MC GUIRE DEP CON  
126.475 363.8



NE-2, 07 OCT 2021 to 04 NOV 2021

NE-2, 07 OCT 2021 to 04 NOV 2021

POINT PLEASANT FIVE DEPARTURE (PTPL5 • MANTIA) WRIGHTSTOWN, NEW JERSEY  
MC GUIRE FLD. (JOINT BASE MC GUIRE DIX LAKEHURST) (KWRI)  
Orig 02MAR17

20030

MC GUIRE FLD, (JOINT BASE MC GUIRE DIX LAKEHURST) (KWRI)  
**POINT PLEASANT FIVE DEPARTURE (PTPL5•MANTA)** WRIGHTSTOWN, NEW JERSEY

SHL-150 [USAF]



DEPARTURE ROUTE DESCRIPTION  
(Continued)

TAKE-OFF RWY 6: Climb on a 058° track, thence....

TAKE-OFF RWY 18: Climb on a 185° track, thence....

TAKE-OFF RWY 24: Climb on a 238° track, thence....

TAKE-OFF RWY 36: Climb on a 005° track, thence....

...via RADAR vectors to RBV VORTAC R-122/16.4 DME (DIXIE). Cross DIXIE dt or above 3000. Fly RBV R-122 (V276) to RBV R-122/31 DME (GAMBY) and RBV R-122/47 DME (MANTA). Cross GAMBY and MANTA at 6000, thence....

via (transition) or (assigned route)

SHLEP TRANSITION (PTPL5.SHLEP): Via V139/J121 to HTO VORTAC R-236/19.2

DME (SHLEP).

NE-2, 07 OCT 2021 to 04 NOV 2021

NE-2, 07 OCT 2021 to 04 NOV 2021

**POINT PLEASANT FIVE DEPARTURE (PTPL5•MANTA)**

Orig 02MARI7

WRIGHTSTOWN, NEW JERSEY  
MC GUIRE FLD, (JOINT BASE MC GUIRE DIX LAKEHURST) (KWRI)