

20030

POTTSTOWN THREE DEPARTURE (PTW3 • PTW)

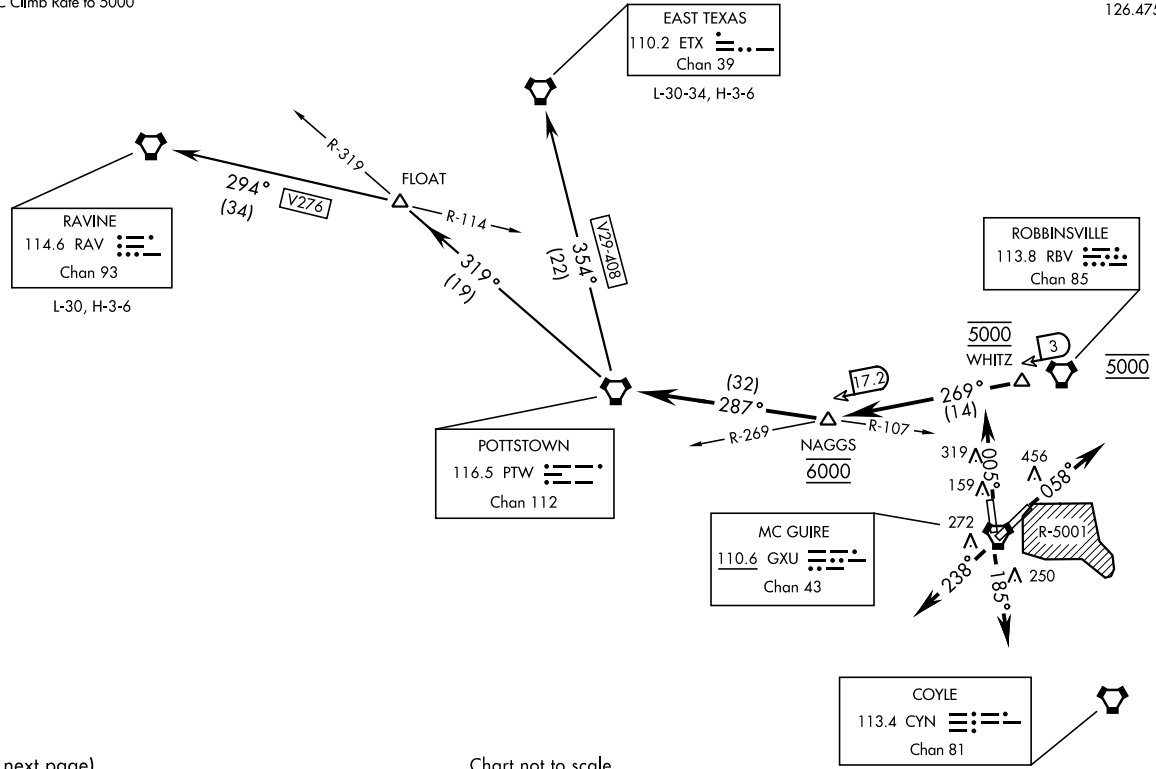
WRIGHTSTOWN, NEW JERSEY

ATIS 110.6 270.1
 CLNC DEL
 135.2 335.8
 GND CON
 121.8 275.8
 MC GUIRE TOWER
 118.65 255.6
 MC GUIRE DEP CON
 126.475 363.8

RADAR REQUIRED

Rwy	Knots	60	120	180	240	300	360
6	V/V(fpm)	436	872	1308	1744	2180	2616
18	V/V(fpm)	351	702	1053	1404	1755	2106
24	V/V(fpm)	359	718	1077	1436	1795	2154
36	V/V(fpm)	421	842	1263	1684	2105	2526

ATC Climb Rate to 5000'



(Continued on next page)

Chart not to scale

POTSTOWN THREE DEPARTURE (PTW3 • PTW)
 WRIGHTSTOWN, NEW JERSEY
 MC GUIRE FLD. (JOINT BASE MC GUIRE DIX LAKEHURST) (KWRI)
 Orig 02MARI17



20030

POTTSTOWN THREE DEPARTURE (PTW3•PTW)

MC GUIRE FLD, (JOINT BASE MC GUIRE DIX LAKEHURST) (KWRI)
WRIGHTSTOWN, NEW JERSEY

SHL-150 [USAF]

DEPARTURE ROUTE DESCRIPTION
(Continued)

TAKE-OFF RWY 6: Climb on a 058° track, thence....

TAKE-OFF RWY 18: Climb on a 185° track, thence....

TAKE-OFF RWY 24: Climb on a 238° track, thence....

TAKE-OFF RWY 36: Climb on a 005° track, thence....

...via RADAR vectors to RBV VORTAC. Cross RBV at 5000. Then intercept and fly RBV R-269 to RBV R-269/3 DME (WHITZ) and RBV R-269/17.2 DME (NAGGS). Cross WHITZ at 5000, cross NAGGS at 6000. Intercept and fly PTW VORTAC R-107 to PTW VORTAC thence....

via (transition) or (assigned route)

EAST TEXAS TRANSITION (PTW3.ETX): (non-turbojet a/c only) Via V29/V408 to ETX VORTAC.

RAVINE TRANSITION (PTW3.RAV): Via PTW R-319 to RAV R-114 intersection (FLOAT) then via V276 to RAV VORTAC.

POTTSTOWN THREE DEPARTURE (PTW3•PTW)

Orig 02MAR17

WRIGHTSTOWN, NEW JERSEY
MC GUIRE FLD, (JOINT BASE MC GUIRE DIX LAKEHURST) (KWRI)