

APCH CRS 005°	Rwy Idg 7126	TDZE 129	Arpt Elev 141
------------------	-----------------	-------------	------------------

AL-150 (USAF)
MC GUIRE FIELD (JOINT BASE MC GUIRE DIX LAKEHURST) (KWRI)

V * Circling NA SE of Rwy 24 and E of Rwy 36 when R-5001 A/B Active. MISSED APPROACH: Climb to 2000 direct DUOVR, then turn right direct FATBU and hold.

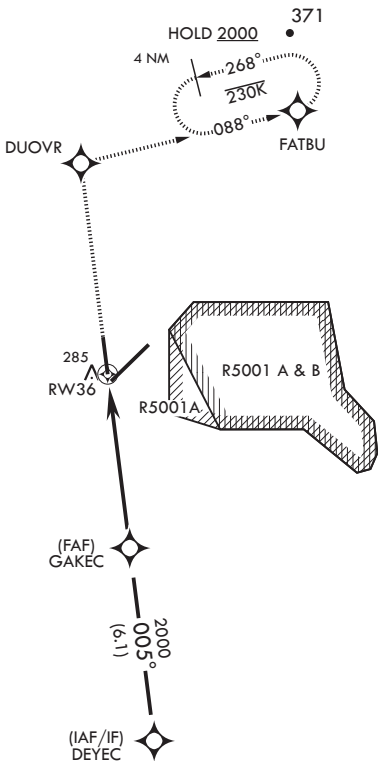
ATIS 110.6 270.1	MC GUIRE APP CON 126.475 363.8	TOWER 118.65 255.6	GND CON 121.8 275.8	CLNC DEL 135.2 335.8	PAR
---------------------	-----------------------------------	-----------------------	------------------------	-------------------------	-----

DME/DME RNP-0.3 NA

RADAR required when R-5001 is active.

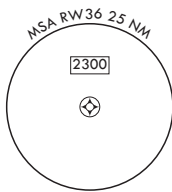
RADAR required for holding above 2000 and/or > 230 KIAS.

If RADAR inoperative, expect 15 min delay for deactivation of R-5001.

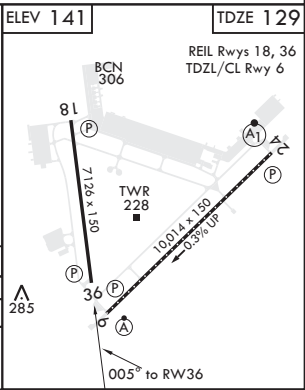
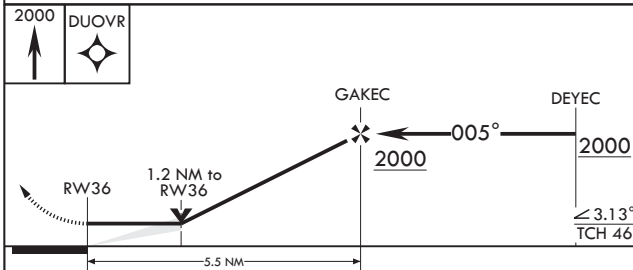


Alternate Missed Approach instructions: Climb to 2000 direct DUOVR, expect further clearance from ATC.

Missed approach holding at FATBU NA when R-5001 is active with aerial gunnery.



EMERG SAFE ALT 100 NM 5100



CATEGORY	A	B	C	D	E
LNVA MDA	560-1 431 (500-1)	560-1 431 (500-1)	560-1 431 (500-1)	560-1 431 (500-1)	560-1 431 (500-1)
C CIRCLING*	680-1 539 (600-1)	680-1 539 (600-1)	700-1 559 (600-1)	700-2 559 (600-2)	1200-3 1059 (1100-3)

NE-2, 07 OCT 2021 to 04 NOV 2021

NE-2, 07 OCT 2021 to 04 NOV 2021