

WRIGHTSTOWN, NEW JERSEY

RNAV (GPS) RWY 6

WAAS CH 91356 W06A	APCH CRS 058°	Rwy ldg TDZE Arpt Elev	10,014 131 141
---------------------------------	-------------------------	------------------------------	---

AL-150 (USAF)
MC GUIRE FIELD (JOINT BASE MC GUIRE DIX LAKEHURST) (KWRI)

V * When TDZ/CL lights inop, increase RVR to 24. When ALS inop, increase RVR to 40, vis to 3/4 mile.
** When ALS inop, increase vis to 1 1/4 miles.
*** When ALS inop, increase CAT AB RVR to 55, vis to 1 mile; CAT CDE vis to 1 1/4 miles.

ALSIF-2 MISSED APPROACH: Climb to 2000 direct DAYYO and hold.

ATIS 110.6 270.1	MC GUIRE APP CON 126.475 363.8	TOWER 118.65 255.6	GND CON 121.8 275.8	CLNC DEL 135.2 335.8	PAR
----------------------------	--	------------------------------	-------------------------------	--------------------------------	-----

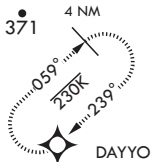
**** Circling NA SE of Rwy 24 and E of Rwy 36 when R-5001 A/B Active.

DME/DME RNP-0.3 NA

For uncompensated Baro-VNAV systems, Procedure NA below -15°C (5°F) or above 52°C (126°F).

Alternate Missed Approach instructions: Climb to 2000 direct DAYYO, expect further clearance from ATC.

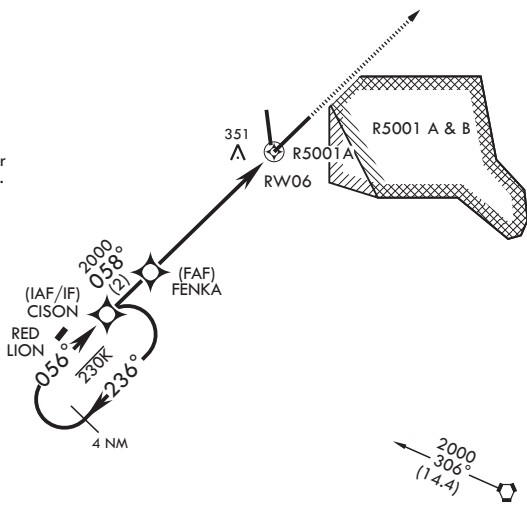
Missed approach holding at DAYYO NA when R-5001 is active with aerial gunnery.



RADAR required when R-5001 is active.

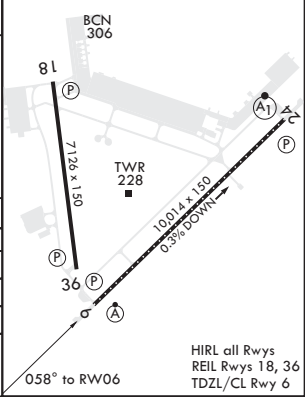
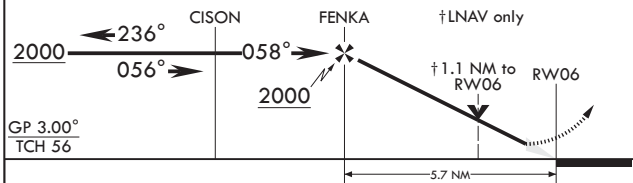
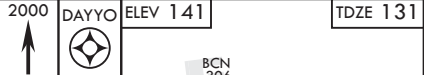
RADAR required for holding above 2000 and/or > 230 KIAS.

If RADAR inoperative, expect 15 min delay for deactivation of R-5001.



EMERG SAFE ALT 100 NM 5100

VGSI and RNAV glidepath not coincident (VGSI angle 3.00/TCH 76).



CATEGORY	A	B	C	D	E
LPV DA*	331/18		200	(200-½)	
RNAV/VNAV DA**	560/40		429	(500-¾)	
RNAV MDA***	560/24	429 (500-½)	560/40	429 (500-¾)	
C CIRCLING****	680-1	539 (600-1)	700-1½ 559 (600-1½)	700-2 559 (600-2)	1200-3 1059 (1100-3)

WRIGHTSTOWN, NEW JERSEY

MC GUIRE FIELD (JOINT BASE MC GUIRE DIX LAKEHURST) (KWRI)

Amdt 6 22APR21

40°01'N - 74°36'W

RNAV (GPS) RWY 6

NE-2, 07 OCT 2021 to 04 NOV 2021

NE-2, 07 OCT 2021 to 04 NOV 2021

HIRL all Rwys
REIL Rwys 18, 36
TDZL/CL Rwy 6