

VORTAC GXU 110.6 Chan 43	APCH CRS 179°	Rwy ldg 7126 TDZE 123 Arprt Elev 141
--	-------------------------	---

AL-150 [USAF]

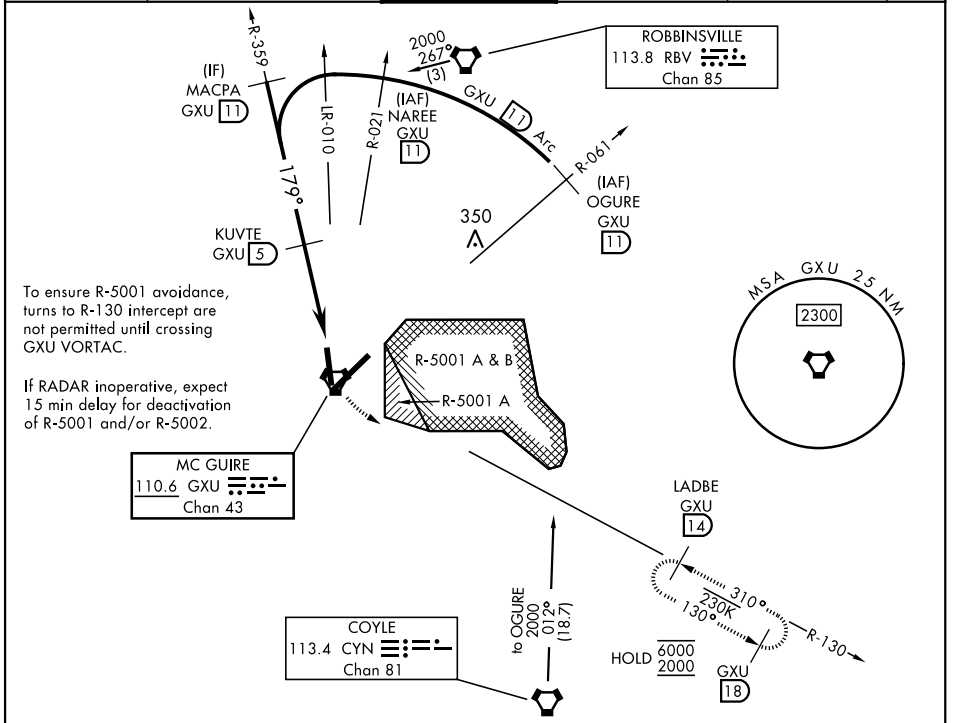
(JOINT BASE MC GUIRE DIX LAKEHURST) (KWRI)

RADAR required when R-5001 and/or R-5002 is active.

▼ * Circling NA SE of RWY 24 and E of RWY 36 when R-5001 A/B active.

MISSED APPROACH: Climb to 2000 via GXU VORTAC R-130 to LADBE and hold, DO NOT turn prior to GXU.

ATIS 110.6 270.1	MC GUIRE APP CON 126.475 363.8	MC GUIRE TOWER 118.65 255.6	GND CON 121.8 275.8	CLNC DEL 135.2 335.8	PAR
----------------------------	--	---------------------------------------	-------------------------------	--------------------------------	-----



To ensure R-5001 avoidance, turns to R-130 intercept are not permitted until crossing GXU VORTAC.

If RADAR inoperative, expect 15 min delay for deactivation of R-5001 and/or R-5002.

MC GUIRE
110.6 GXU
Chan 43

COYLE
113.4 CYN
Chan 81

LADBE
GXU 14
HOLD 6000/2000
GXU 18

EMERG SAFE ALT 100 NM 5100 FROM GXU VORTAC

OGURE R-061 (11)	NAREE R-021 (11)	MACPA R-359 (11)	KUVTE (5)	IPURE (1.5)	VORTAC	2000 GXU R-130 (14)	LADBE GXU (14)	ELEV 141	TDZE 123
<p>2000</p> <p>2000</p> <p>2000</p> <p>179°</p> <p>3.18° TCH 68</p> <p>1500</p> <p>3.5 NM</p> <p>0.4</p>						<p>179° 3.9 NM from KUVTE</p> <p>306</p> <p>TWR 228</p> <p>7126 x 150</p> <p>10,014 x 150</p> <p>0.5 NM</p>			
CATEGORY	A		B		C		D		E
S-18	620-1		497 (500-1)		620-1½		497 (500-1½)		
CIRCLING*	680-1	539	(600-1)		700-1½	700-2	1200-3		
					559	559	1059		
					(600-1½)	(600-2)	(1100-3)		

NE-2, 07 OCT 2021 to 04 NOV 2021

NE-2, 07 OCT 2021 to 04 NOV 2021