

LOC F-MDT 110.9	APP CRS 128°	Rwy Idg 8070
		TDZE 308
		Apt Elev 310

ILS or LOC RWY 13

HARRISBURG INTL (MDT)

-17°C Circling NA south of Rwy 13-31.	ALSF-2 	MISSED APPROACH: Climb to 900 then climbing left turn to 3000 on heading 060° and RAV VORTAC R-193 to BAARN INT/LRP 18 DME and hold.
---------------------------------------	------------	--

ATIS 118.8	HARRISBURG APP CON (080°-179°) 126.45 281.525 (180°-309°) 124.1 273.525 (310°-079°) 118.25 269.45	HARRISBURG INTL TOWER 124.8 269.35	GND CON 121.7 348.6
----------------------	---	--	-------------------------------

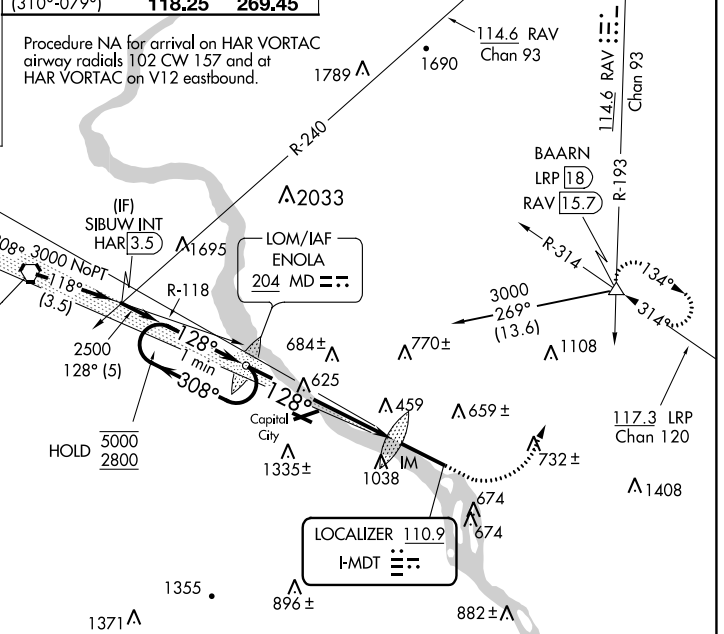
ALTERNATE MISSED APCH FIX

HARRISBURG HAR

112.5 Chan 72

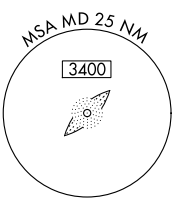
101°

281°

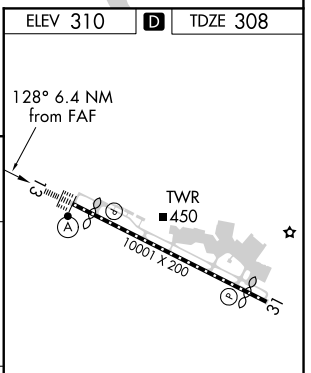
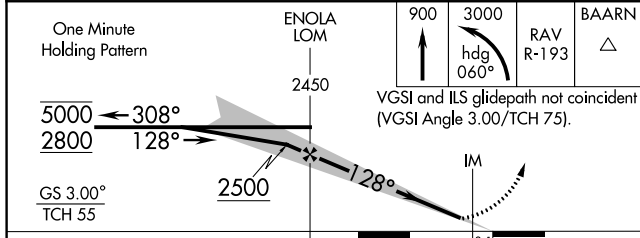


NE-4, 07 OCT 2021 to 04 NOV 2021

NE-4, 07 OCT 2021 to 04 NOV 2021



ELEV 310	TDZE 308
----------	----------



CATEGORY	A	B	C	D
S-ILS 13		508/18	200 (200-½)	
S-LOC 13	900/24	592 (600-½)	900-1¼	592 (600-1¼)
CIRCLING	900-1	590 (600-1)	940-1¾ 630 (700-1¾)	1000-2 690 (700-2)

TDZ/CL Rwy 13				
REIL Rwy 31				
HIRL Rwy 13-31				
FAF to MAP 6.4 NM				
Knots	60	90	120	150 180
Min:Sec	6:24	4:16	3:12	2:34 2:08