

WAAS Chan 60342 W24A	APCH CRS 242°	Rwy ldg 5002 TDZE 101 Arprt Elev 101
--	-------------------------	---

AL-223 [USN]

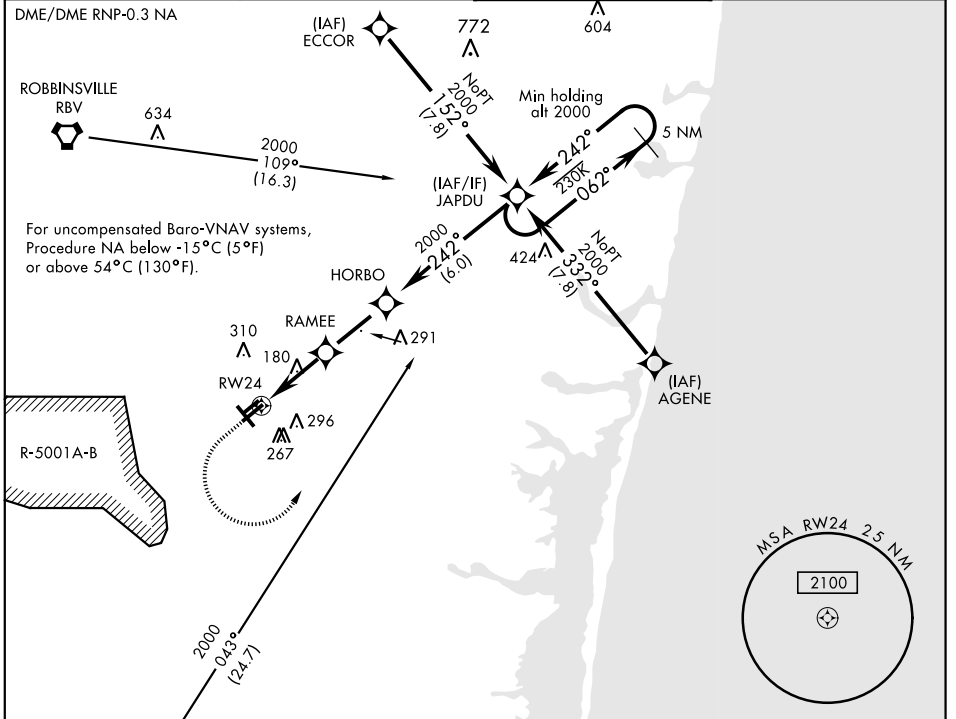
(JOINT BASE MC GUIRE DIX LAKEHURST) (KNEL)

▼ * When ALS inop, increase vis to ¼ mile.
 ** When ALS inop, increase CAT ABC vis to 7/8 mile;
 CAT D vis to 1 mile.
 *** When ALS inop, increase vis to 1 mile.

MALSR

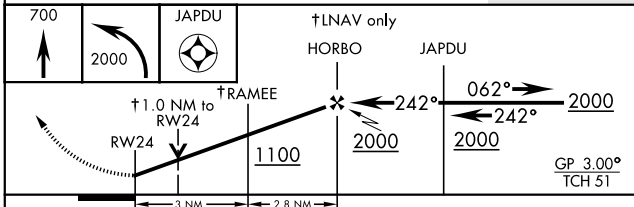

MISSED APPROACH: Climb to 700 then climbing left turn to 2000 direct JAPDU and hold.

ATIS * 276.525	MC GUIRE APP CON 126.475 363.8	LAKEHURST TOWER * 127.775 360.2	GND CON 118.375 307.05
---------------------------------	---	--	---

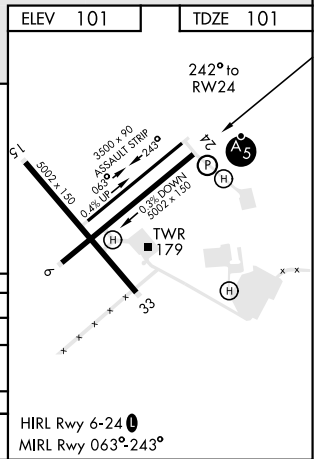


ELEV 101	TDZE 101
-----------------	-----------------

EMERG SAFE ALT 100 NM 4100



CATEGORY	A	B	C	D
LPV DA *	301-½ 200 (200-½)			
LNAV/VNAV DA **	383-½ 282 (300-½)	403-½ 302 (400-½)	418-½ 317 (400-½)	436-½ 335 (400-½)
LNAV MDA ***	460-½ 359 (400-½)	460-½ 359 (400-½)	460-½ 359 (400-½)	460-½ 359 (400-½)
CIRCLING	640-1 539 (600-1)	720-1 619 (700-1)	720-1 ¾ 619 (700-1 ¾)	720-2 619 (700-2)



NE-2, 07 OCT 2021 to 04 NOV 2021

NE-2, 07 OCT 2021 to 04 NOV 2021