

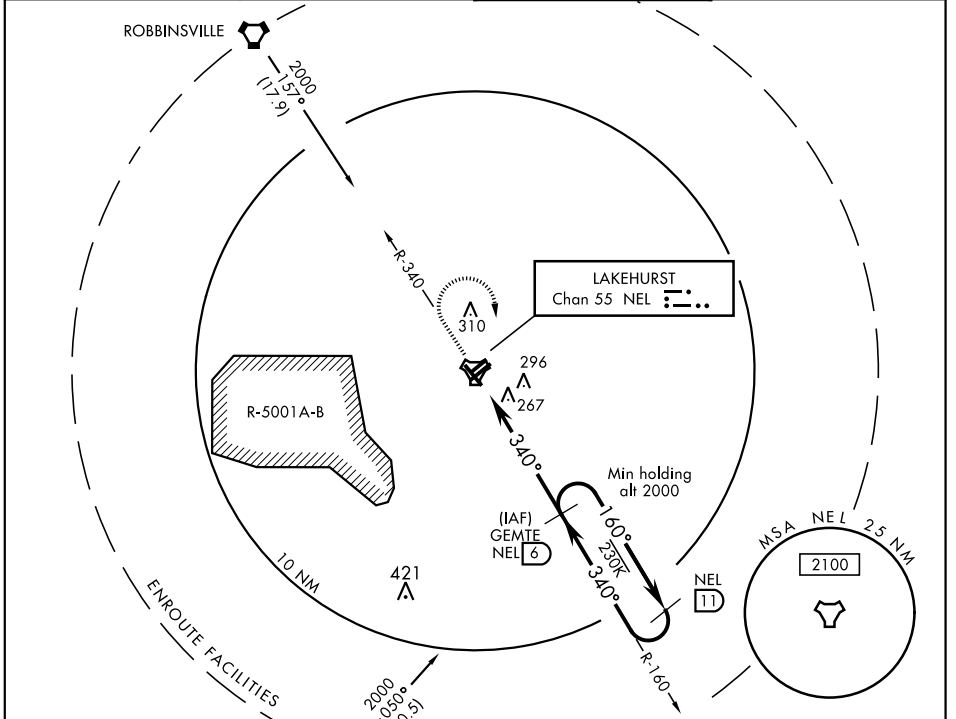
TACAN NEL Chan 55	APCH CRS 340°	Rwy Idg TDZE Arpr Elev 5002 88 101
-----------------------------	-------------------------	--

AL-223 [USN]

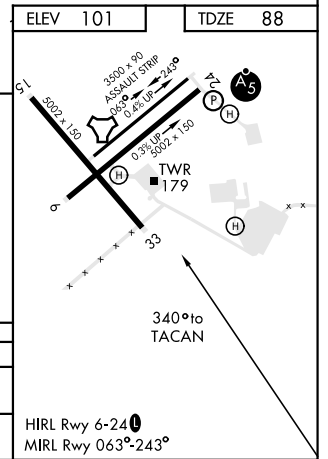
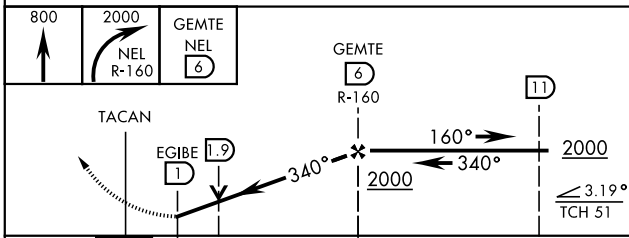
(JOINT BASE MC GUIRE DIX LAKEHURST) (KNEL)

<p>ATIS ★ 276.525</p>		<p>MC GUIRE APP CON 126.475 363.8</p>		<p>LAKEHURST TOWER ★ 127.775 360.2</p>		<p>GND CON 118.375 307.05</p>	
--	--	--	--	---	--	--	--

MISSED APPROACH: Climb to 800, then climbing right turn to 2000 to intercept NEL TACAN R-160 to GEMTE and hold.



ELEV 101	TDZE 88
----------	---------



CATEGORY	A	B	C	D
S-33	600-1 512 (500-1)		600- 1 5/8 512 (500-1 5/8)	
CIRCLING	640-1 539 (600-1)	720-1 619 (700-1)	720-1 3/4 619 (700-1 3/4)	720-2 619 (700-2)

HIRL Rwy 6-24
 MIRL Rwy 063°-243°

NE-2, 07 OCT 2021 to 04 NOV 2021

NE-2, 07 OCT 2021 to 04 NOV 2021