

LAKEHURST, NEW JERSEY

VOR or VOR/DME or TACAN Y RWY 33

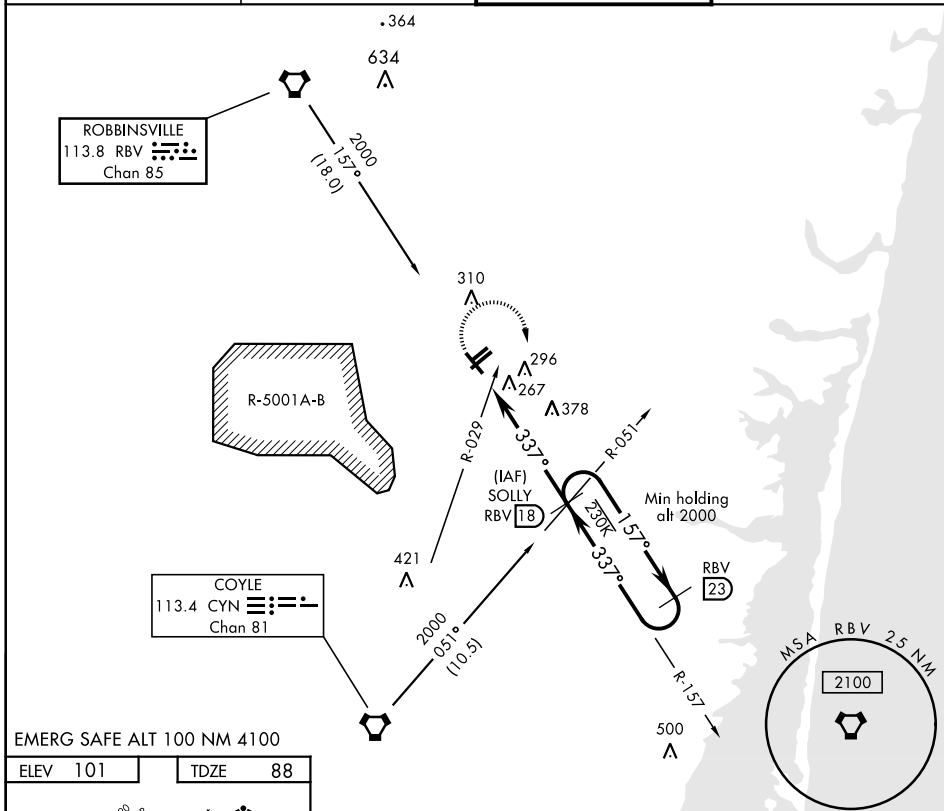
LAKEHURST MAXFIELD FLD,

AL-223 [USN] (JOINT BASE MC GUIRE DIX LAKEHURST) (KNEL)

VORTAC RBV 113.8 Chan 85	APCH CRS 337°	Rwy ldg TDZE Arprt Elev 5002 88 101
--	-------------------------	---

MISSED APPROACH: Climbing right turn to 2000, intercept RBV VORTAC R-157 to SOLLY and hold.

ATIS ★ 276.525	MC GUIRE APP CON 126.475 363.8	LAKEHURST TOWER ★ 127.775 360.2	GND CON 118.375 307.05
--------------------------	--	---	----------------------------------



EMERG SAFE ALT 100 NM 4100

ELEV 101	TDZE 88				
Knots	60	90	120	150	180
Min:Sec	5:06	3:24	2:33	2:02	1:42

2000 RBV R-157	SOLLY RBV 18	SOLLY RBV R-157 18 / CYN R-051	RBV R-157 23	
CATEGORY	A	B	C	D
S-33	660-1 572 (600-1)		660-1½ 572 (600-1½)	
CIRCLING	660-1 559 (600-1)	720-1 619 (700-1)	720-1¾ 619 (700-1¾)	720-2 619 (700-2)

LAKEHURST, NEW JERSEY
Amdt 3 30JAN20

40°02'N-74°21'W LAKEHURST MAXFIELD FLD,
(JOINT BASE MC GUIRE DIX LAKEHURST) (KNEL)

VOR or VOR/DME or TACAN Y RWY 33

NE-2, 07 OCT 2021 to 04 NOV 2021

NE-2, 07 OCT 2021 to 04 NOV 2021