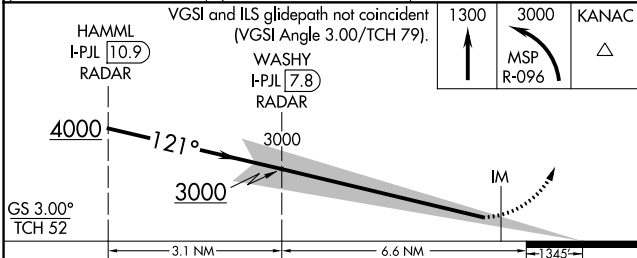
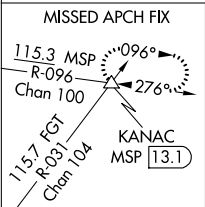
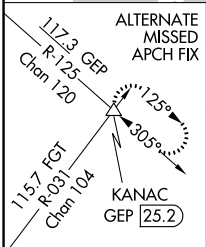
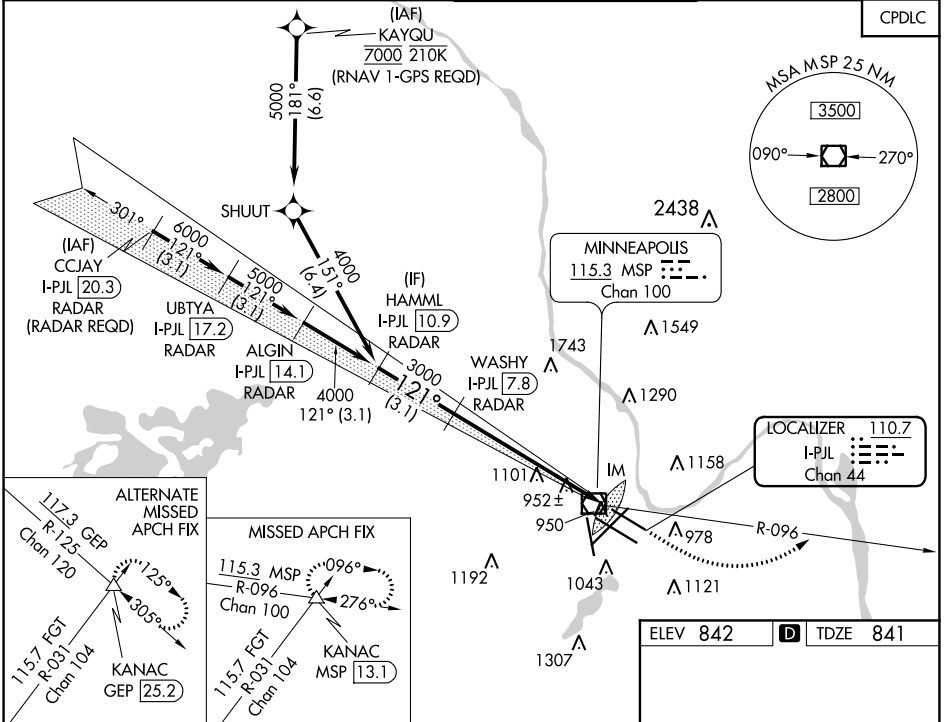


| | | | |
|---|------------------------|-----------------------------|---|
| LOC/DME I-PJL 110.7 Chan 44 | APP CRS 121° | Rwy Idg TDZE Apt Elev | 7620 841 842 |
|---|------------------------|-----------------------------|---|

ILS RWY 12L (SA CAT I)

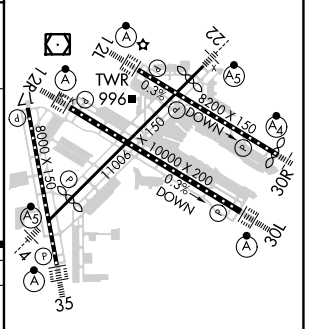
MINNEAPOLIS-ST PAUL INTL/WOLD-CHAMBERLAIN (MSP)

| | | | | | | | |
|--|--|--|---|--|--|--|--------------------------|
| ⚠ Simultaneous approach authorized with Rwy 12R. Requires specific OPSPEC, MSPEC, or LOA approval and use of HUD to DH. DME or RADAR required. | MINNEAPOLIS APP CON 118.725 335.65 (Rwy 35) 119.3 335.65 (12L-30R, 4-22, 17) 126.95 335.65 (12R-30L) | | MINNEAPOLIS TOWER 123.675 273.55 (17-35) 123.95 273.55 (12L-30R) 126.7 273.55 (12R-30L, 4-22) | | GND CON N 121.8 348.6 S 121.9 348.6 W 127.925 348.6 | | CLNC DEL 133.2 |
| | D-ATIS ARR 135.35 239.275 DEP 120.8 | | ALSF-2 | | MISSED APPROACH: Climb to 1300, then climbing left turn to 3000 on MSP VOR/DME R-096 to KANAC INT/MSP 13.1 DME and hold. | | |



| | | | | |
|-----------|----------------------|---|---|---|
| CATEGORY | A | B | C | D |
| S-ILS 12L | RA 147/14 150 DA 991 | | | |

| | |
|----------|-------------------|
| ELEV 842 | D TDZE 841 |
|----------|-------------------|



SA CATEGORY I ILS - SPECIAL AIRCREW & AIRCRAFT CERTIFICATION REQUIRED

HIRL all Rwys
REIL Rwy 17
TDZ/CL Rwys 12L, 12R, 30L, and 35

NC-1, 07 OCT 2021 to 04 NOV 2021

NC-1, 07 OCT 2021 to 04 NOV 2021