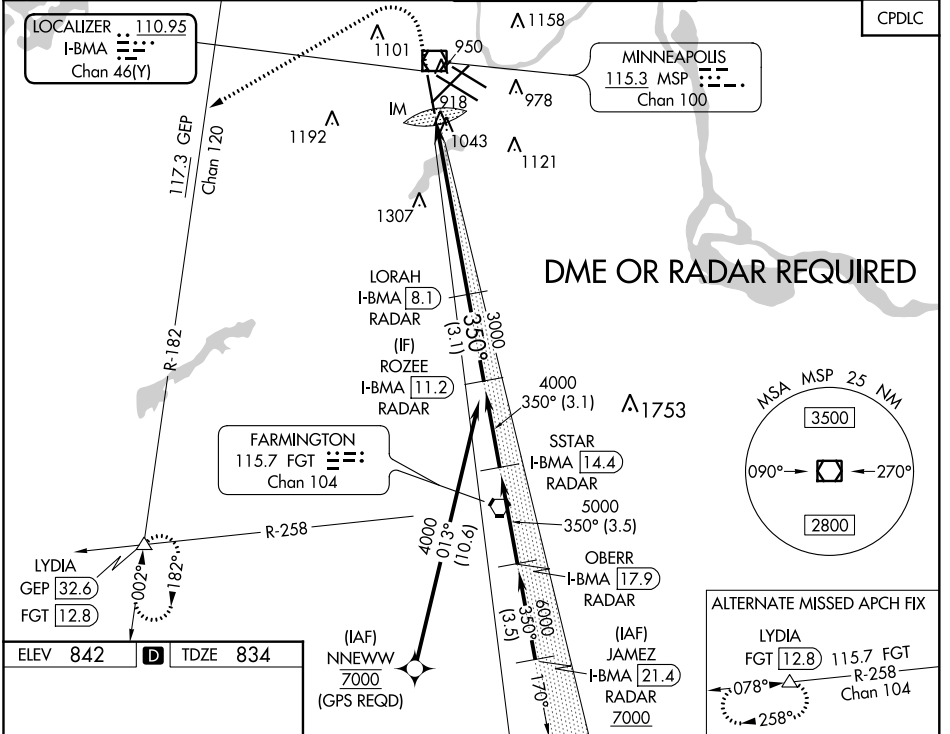


LOC/DME I-BMA 110.95	APP CRS 350°	Rwy Ldg TDZE 8000 834
Chan 46 (Y)		Apt Elev 842

ILS RWY 35 (CAT II & III)
MINNEAPOLIS-ST PAUL INTL/WOLD-CHAMBERLAIN (MSP)

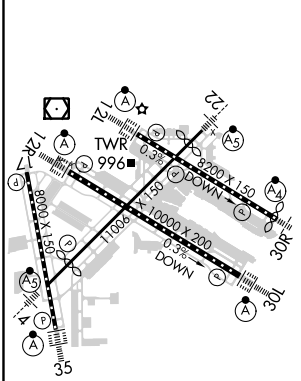
DME or RADAR required. 		ALSIF-2 	MISSED APPROACH: Climb to 1600 then climbing left turn to 3000 on heading 240° and on GEP VORTAC R-182 to LYDIA INT/GEOP 32.6 DME and hold.	
D-ATIS ARR 135.35 239.275 DEP 120.8	MINNEAPOLIS APP CON 118.725 335.65 (Rwy 35) 119.3 335.65 (12L-30R, 4-22, 17) 126.95 335.65 (12R-30L)	MINNEAPOLIS TOWER 123.675 273.55 (17-35) 123.95 273.55 (12L-30R) 126.7 273.55 (12R-30L, 4-22)	GND CON N 121.8 348.6 S 121.9 348.6 W 127.925 348.6	CLNC DEL 133.2



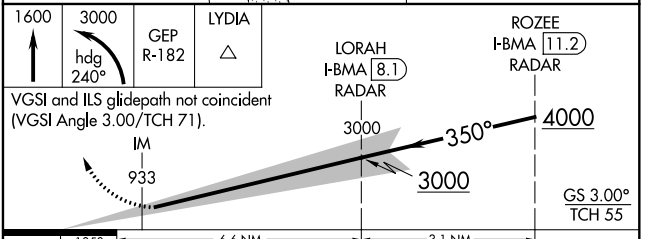
NC-1, 07 OCT 2021 to 04 NOV 2021

NC-1, 07 OCT 2021 to 04 NOV 2021

ELEV 842	D	TDZE 834
-----------------	----------	-----------------



HIRL all Rwys
 REIL Rwy 17
 TDZ/CL Rws 12L, 12R, 30L, and 35



CATEGORY	A	B	C	D
S-ILS 35	CAT II RA 106/12 110 DA 944			
S-ILS 35	CAT III RVR 06			

CATEGORY II & III ILS - SPECIAL AIRCREW & AIRCRAFT CERTIFICATION REQUIRED