

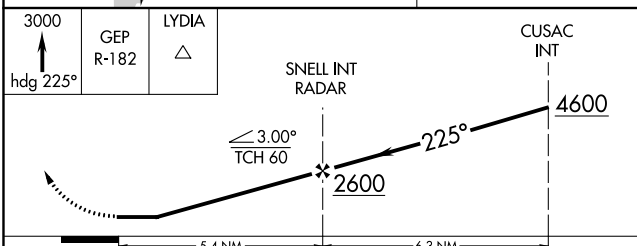
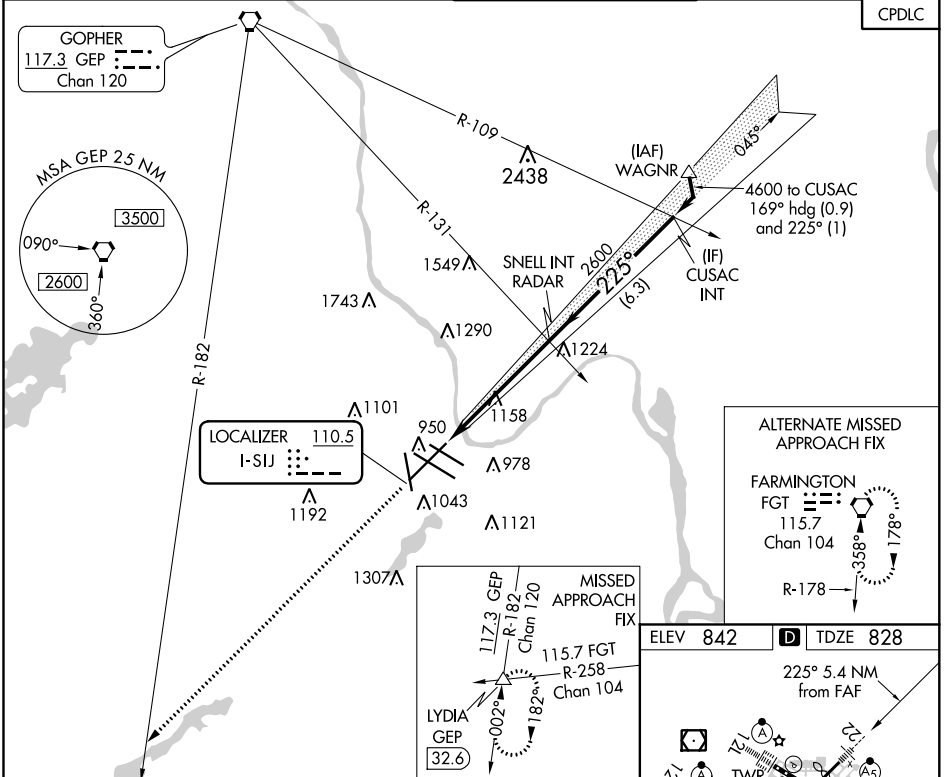
LOC I-SIJ 110.5	APP CRS 225°	Rwy ldg 10006 TDZE 828 Apt Elev 842
---------------------------	------------------------	--

LOC RWY 22

MINNEAPOLIS-ST PAUL INTL/WOLD-CHAMBERLAIN (MSP)

<p>Rwy 22 helicopter visibility reduction below RVR 4000 NA. For inop ALS, increase S-22 Cat A and B visibility to RVR 5500, and Cat E visibility to 1 3/4 SM.</p>	<p>MALS R</p>	<p>MISSED APPROACH: Climb to 3000 on heading 225° and GEP VORTAC R-182 to LYDIA INT/GEP 32.6 DME and hold.</p>	
		D-ATIS ARR 135.35 239.275 DEP 120.8	MINNEAPOLIS APP CON 118.725 335.65 (Rwy 35) 119.3 335.65 (12L-30R, 4-22, 17) 126.95 335.65 (12R-30L)

CLNC DEL 133.2
CPDLC



CATEGORY	A	B	C	D	E
S-22	1420/40	592 (600-3/4)	1420-1 1/4	592 (600-1 1/4)	
CIRCLING	1420-1	578 (600-1)	1460-1 3/4 618 (700-1 3/4)	1620-2 1/2 778 (800-2 1/2)	1800-3 958 (1000-3)

ELEV 842		TDZE 828			
<p>225° 5.4 NM from FAF</p>					
<p>HIRL all Rwys REIL Rwy 17 TDZ/CL Rwys 12L, 12R, 30L, and 35</p>					
FAF to MAP 5.4 NM					
Knots	60	90	120	150	180
Min:Sec	5:24	3:36	2:42	2:10	1:48

NC-1, 07 OCT 2021 to 04 NOV 2021

NC-1, 07 OCT 2021 to 04 NOV 2021

LOC RWY 22