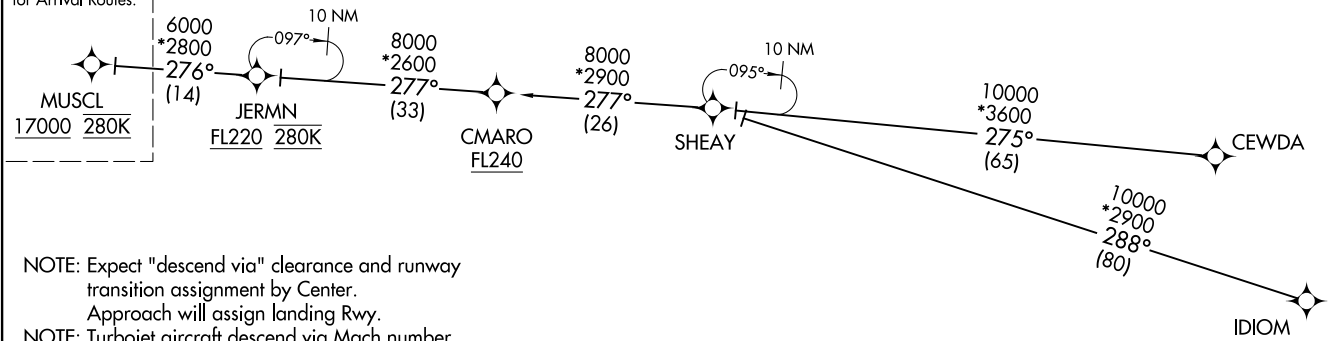


MINNEAPOLIS APP CON  
126.35 335.5  
D-ATIS ARR  
135.35 239.275

(MUSCL.MUSCL3) 17173  
MINNEAPOLIS-ST PAUL INTL/WOLD-CHAMBERLAIN (MSP)  
MUSCL THREE ARRIVAL (RNAV) Transition Routes AL-264 (FAA) MINNEAPOLIS, MINNESOTA

MUSCL THREE ARRIVAL (RNAV) Transition Routes  
(MUSCL.MUSCL3) 051ANT7  
MINNEAPOLIS, MINNESOTA  
MINNEAPOLIS-ST PAUL INTL/WOLD-CHAMBERLAIN (MSP)

See following page  
for Arrival Routes.



- NOTE: Expect "descend via" clearance and runway transition assignment by Center. Approach will assign landing Rwy.
- NOTE: Turbojet aircraft descend via Mach number until intercepting 280K. Maintain 280K until slowed by the STAR, or assigned by ATC.
- NOTE: DME/DME/IRU or GPS required.
- NOTE: For turbojet aircraft only.
- NOTE: RADAR required.
- NOTE: RNAV 1.

- CEWDA TRANSITION (CEWDA.MUSCL3)
- CMARO TRANSITION (CMARO.MUSCL3)
- IDIOM TRANSITION (IDIOM.MUSCL3)
- JERMN TRANSITION (JERMN.MUSCL3)
- SHEAY TRANSITION (SHEAY.MUSCL3)

(CONTINUED ON FOLLOWING PAGE)



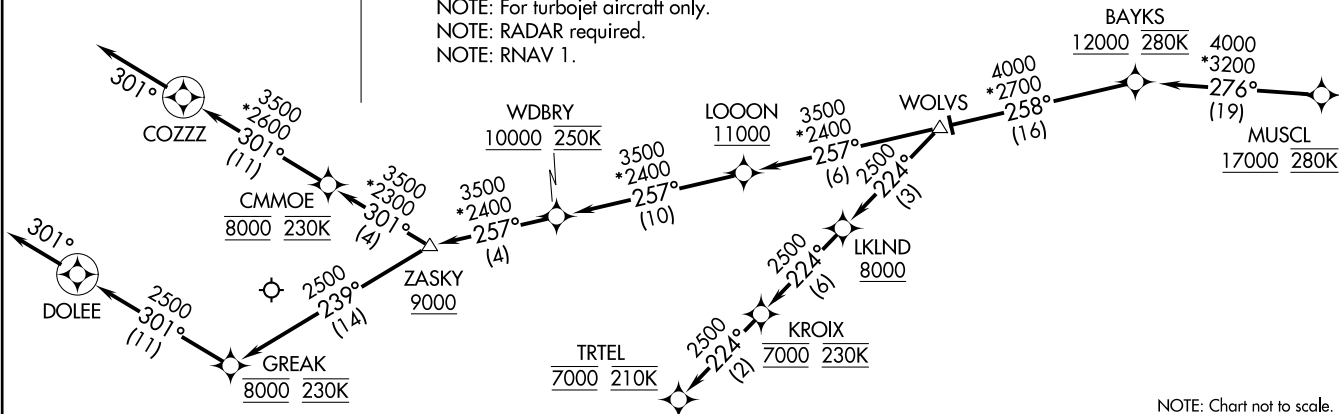
NOTE: Chart not to scale.

MUSCL THREE ARRIVAL (RNAV) Arrival Routes  
 (MUSCL,MUSCL3) 05JAN17  
 MINNEAPOLIS-ST PAUL INTL/WOLD-CHAMBERLAIN (MSP)  
 MINNEAPOLIS, MINNESOTA

MINNEAPOLIS APP CON  
 126.35 335.5  
 D-ATIS ARR  
 135.35 239.275



NOTE: Expect "descend via" clearance and runway transition assignment by Center.  
 Approach will assign landing Rwy.  
 NOTE: Turbojet aircraft descend via Mach number until intercepting 280K.  
 Maintain 280K until slowed by the STAR, or assigned by ATC.  
 NOTE: DME/DME/IRU or GPS required.  
 NOTE: For turbojet aircraft only.  
 NOTE: RADAR required.  
 NOTE: RNAV 1.



NOTE: Chart not to scale.

ARRIVAL ROUTE DESCRIPTION

From MUSCL on track 276° to cross BAYKS at or above 12000 and at 280K, then on track 258° to WOLVS.

LANDING RUNWAYS 4, 12L, 17, 22: From WOLVS on track 257° to cross LOOON at or above 11000, then on track 257° to cross WDBRY at or above 10000 and at 250K, then on track 257° to cross ZASKY at or above 9000, then on track 301° to cross CMMOE at 8000 and at 230K, then on track 301° to COZZ, then on track 301°. Expect RADAR vectors to final approach course.

LANDING RUNWAYS 12R, 35: From WOLVS on track 257° to cross LOOON at or above 11000, then on track 257° to cross WDBRY at or above 10000 and at 250K, then on track 257° to cross ZASKY at or above 9000, then on track 239° to cross GREAK at 8000 and at 230K, then on track 301° to DOLEE, then on track 301°. Expect RADAR vectors to final approach course.

LANDING RUNWAYS 30L/R: From WOLVS on track 224° to cross LKLN at or above 8000, then on track 224° to cross KROIX at 7000 and at 230K, then on track 224° to cross TRTEL at 7000 and at 210K. Expect RNAV (RNP), RNAV (GPS), or ILS approach or RADAR vectors to final approach course.

(MUSCL,MUSCL3) 17173  
 MINNEAPOLIS-ST PAUL INTL/WOLD-CHAMBERLAIN (MSP)  
 Arrival Routes  
 AL-264 (FAA) MINNEAPOLIS, MINNESOTA