

ORSKY TWO DEPARTURE

D-ATIS DEP

120.8

CLNC DEL

133.2

CPDLC

MINNEAPOLIS TOWER

123.95 273.55 (12L-30R)

126.7 273.55 (12R-30L, 4-22)

123.675 273.55 (17-35)

MINNEAPOLIS DEP CON

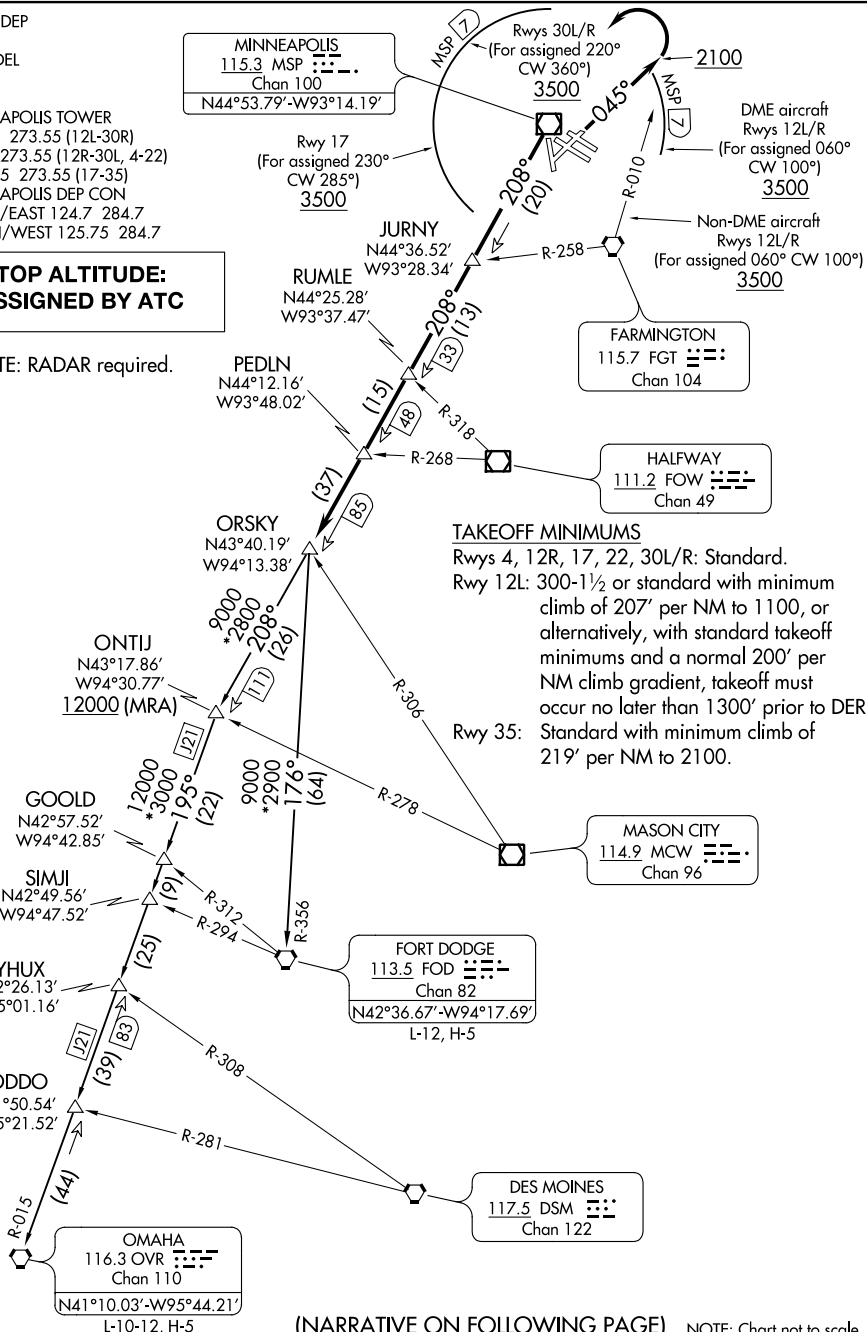
SOUTH/EAST 124.7 284.7

NORTH/WEST 125.75 284.7

**TOP ALTITUDE:
ASSIGNED BY ATC**

NOTE: RADAR required.

NC-1, 07 OCT 2021 to 04 NOV 2021



(NARRATIVE ON FOLLOWING PAGE) NOTE: Chart not to scale.

NC-1, 07 OCT 2021 to 04 NOV 2021



DEPARTURE ROUTE DESCRIPTION

TAKEOFF ALL RUNWAYS: Fly assigned heading for RADAR vectors to MSP R-208 to ORSKY INT/MSP 85 DME. Maintain ATC assigned altitude.

TAKEOFF RUNWAY 4: Climb heading 045° to 2100 before turning left.

DME EQUIPPED AIRCRAFT RUNWAYS 12L/R DEPARTURES: For assigned headings from 060° clockwise to 100°, cross MSP 7 DME at or above 3500. Maintain assigned altitude. If unable to comply, advise ATC as soon as possible prior to departure. Thence

NON-DME EQUIPPED AIRCRAFT RUNWAYS 12L/R DEPARTURES: For assigned headings from 060° clockwise to 100°, cross FGT R-010 at or above 3500. Maintain assigned altitude. If unable to comply, advise ATC as soon as possible prior to departure. Thence

TAKEOFF RUNWAY 17: For assigned headings from 230° clockwise to 285°, cross MSP 7 DME at or above 3500. Maintain assigned altitude. If unable to comply, advise ATC as soon as possible prior to departure. Thence

TAKEOFF RUNWAYS 22, 35: Initially assigned heading. Thence

TAKEOFF RUNWAYS 30L/R: For assigned headings from 220° clockwise to 360°, cross MSP 7 DME at or above 3500. Maintain assigned altitude. If unable to comply, advise ATC as soon as possible prior to departure. Thence

. . . .on transition or assigned route. Expect clearance to filed altitude/flight level 10 (ten) minutes after departure.

FORT DODGE TRANSITION (ORSKY2.FOD): From over ORSKY INT on FOD R-356 to FOD VORTAC.

OMAHA TRANSITION (ORSKY2.OVR): From over ORSKY INT on MSP R-208 to ONTIJ INT, then on OVR R-015 to OVR VORTAC.

NC-1, 07 OCT 2021 to 04 NOV 2021

NC-1, 07 OCT 2021 to 04 NOV 2021