

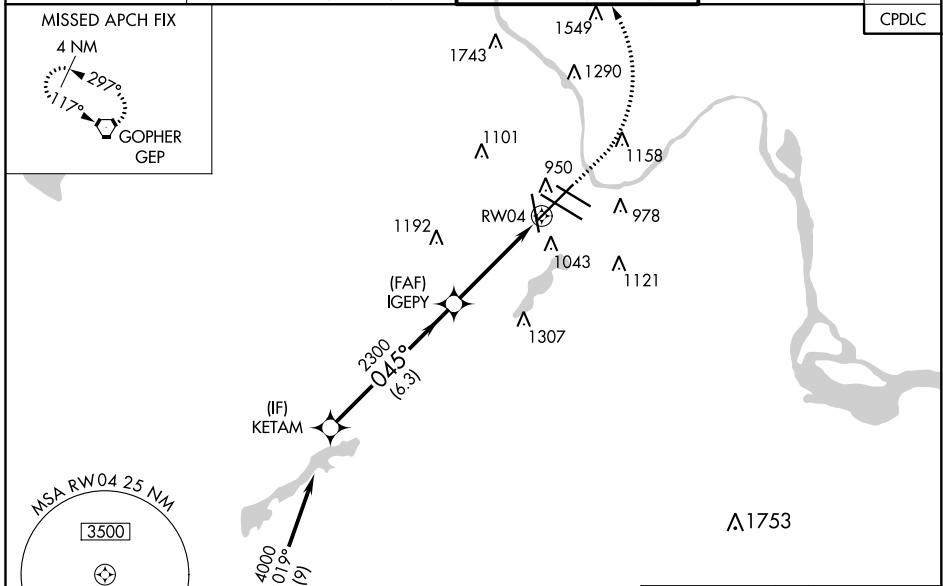
WAAS CH <b>72931</b> <b>W04A</b>	APP CRS <b>045°</b>	Rwy Idg <b>9456</b> TDZE <b>832</b> Apt Elev <b>842</b>
--	------------------------	---

# RNAV (GPS) RWY 4

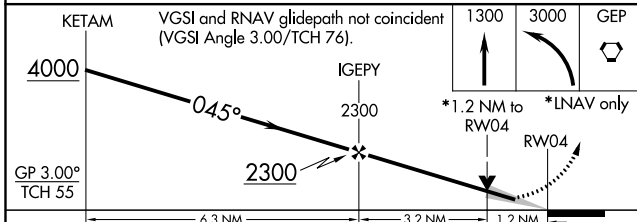
MINNEAPOLIS-ST PAUL INTL/WOLD-CHAMBERLAIN (MSP)

RNP APCH.	<p>▼ For uncompensated Baro-VNAV systems, LNAV/VNAV NA below -19°C or above 54°C. For inop ALS, increase LPV Cat E visibility to RVR 4000, LNAV/VNAV Cat E visibility to 1 3/8 SM, LNAV Cat C/D/E visibility to 1 3/8 SM. #RVR 1800 authorized with use of FD or AP or HUD to DA.</p>	<p>MALSR</p>	<p>MISSED APPROACH: Climb to 1300 then climbing left turn to 3000 direct GEP VORTAC and hold.</p>
-----------	---	--------------	---

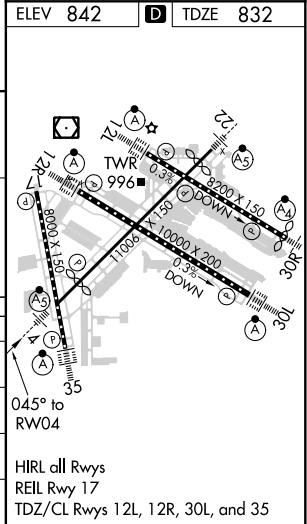
D-ATIS ARR <b>135.35 239.275</b> DEP <b>120.8</b>	MINNEAPOLIS APP CON <b>118.725 335.65</b> (Rwy 35) <b>119.3 335.65</b> (12L-30R, 4-22, 17) <b>126.95 335.65</b> (12R-30L)	MINNEAPOLIS TOWER <b>123.675 273.55</b> (17-35) <b>123.95 273.55</b> (1 2L-30R) <b>126.7 273.55</b> (12R-30L, 4-22)	GND CON <b>N 121.8 348.6</b> <b>S 121.9 348.6</b> <b>W 127.925 348.6</b>	CLNC DEL <b>133.2</b>
---	--	--	---	--------------------------



Procedure NA for arrivals at LYDIA on V505 southbound and on V26 westbound.



KETAM	VGSIs and RNAV glidepath not coincident (VGSIs Angle 3.00/TCH 76).				1300	3000	GEP
4000	IGEPEY				2300	*1.2 NM to RW04 *LNAV only	
GP 3.00° TCH 55	045°				2300	RW04	
CATEGORY	A	B	C	D	E		
LPV DA#	1032/24 200 (200-1/2)						
LNAV/VNAV DA	1281/45 449 (500-7/8)						
LNAV MDA	1300/24	468 (500-1/2)	1300/50		468 (500-1)		
CIRCLING	1360-1	518 (600-1)	1460-1 3/4 618 (700-13/4)	1660-2 3/4 818 (900-23/4)	1800-3 958 (1000-3)		



NC-1, 07 OCT 2021 to 04 NOV 2021

NC-1, 07 OCT 2021 to 04 NOV 2021