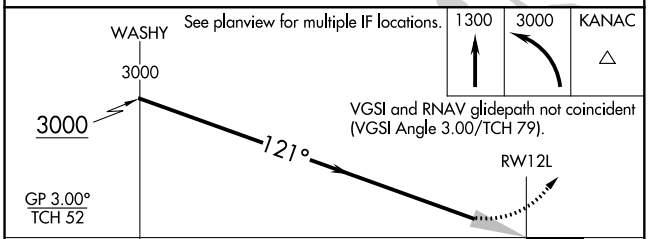
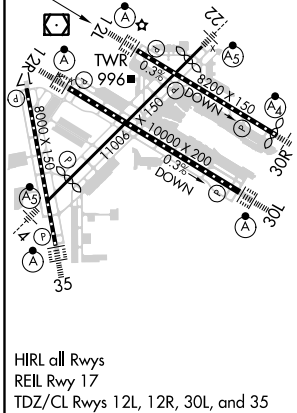
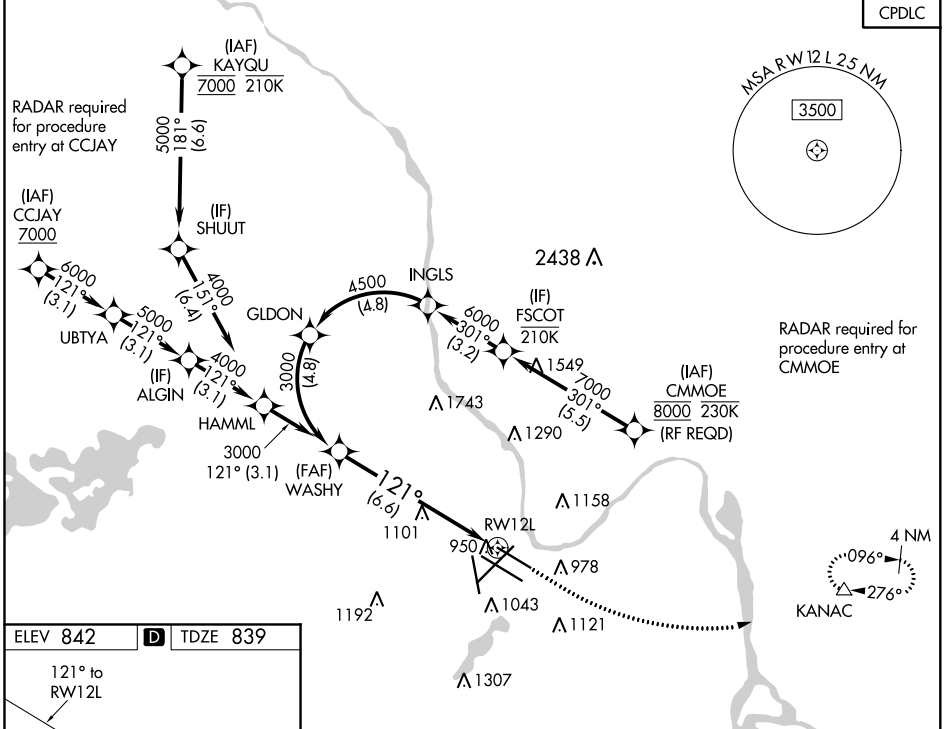


APP CRS	Rwy Idg	<b>7620</b>
<b>121°</b>	TDZE	<b>839</b>
	Apt Elev	<b>842</b>

# RNAV (RNP) Y RWY 12L

MINNEAPOLIS-ST PAUL INTL/WOLD-CHAMBERLAIN (MSP)

<p><b>▼</b> For uncompensated Baro-VNAV systems, procedure NA below -20°C (-4°F) or above 54°C (130°F). GPS required.</p>	MINNEAPOLIS APP CON		MINNEAPOLIS TOWER		GND CON		CLNC DEL <b>133.2</b>
	ARR <b>135.35 239.275</b>		123.675 273.55 (17-35)		N 121.8 348.6		
	DEP <b>120.8</b>		123.95 273.55 (1 2L-30R)		S 121.9 348.6		
	126.95 335.65 (12R-30L)		126.7 273.55 (12R-30L, 4-22)		W 127.925 348.6		



CATEGORY	A	B	C	D
RNP 0.15 DA	1150/24 311 (400-½)			
RNP 0.30 DA	1241/45 402 (400-⅔)			

**AUTHORIZATION REQUIRED**

NC-1, 07 OCT 2021 to 04 NOV 2021

NC-1, 07 OCT 2021 to 04 NOV 2021