

APP CRS	Rwy Idg	<b>10000</b>
<b>121°</b>	TDZE	<b>842</b>
	Apt Elev	<b>842</b>

# RNAV (RNP) Y RWY 12R

MINNEAPOLIS-ST PAUL INTL/WOLD-CHAMBERLAIN (MSP)

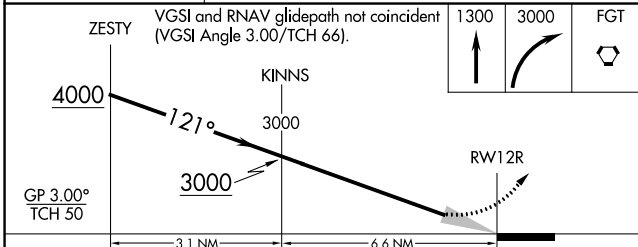
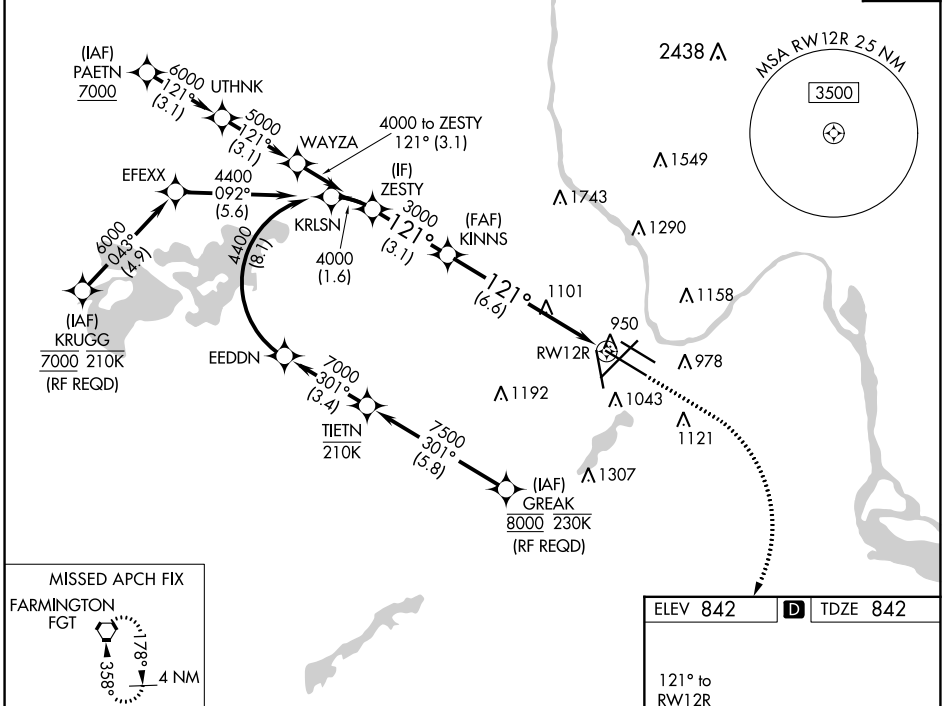
▼ For uncompensated Baro-VNAV systems, procedure NA below -20°C (-4°F) or above 54°C (130°F). Simultaneous approach authorized with Rwy 12L. GPS required. For inop ALS, increase RNP 0.15 all Cats visibility to RVR 6000.



MISSED APPROACH: Climb to 1300 then climbing right turn to 3000 direct FGT VORTAC and hold.

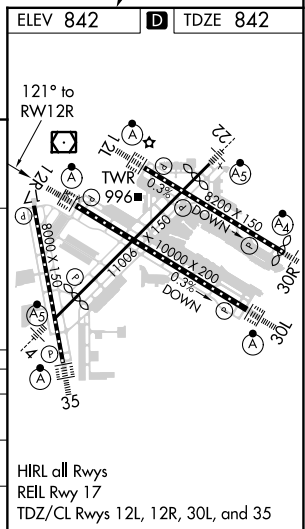
D-ATIS	MINNEAPOLIS APP CON	MINNEAPOLIS TOWER	GND CON	CLNC DEL
ARR <b>135.35 239.275</b>	<b>118.725 335.65</b> (Rwy 35)	<b>123.675 273.55</b> (17-35)	<b>N 121.8 348.6</b>	<b>133.2</b>
DEP <b>120.8</b>	<b>119.3 335.65</b> (12L-30R, 4-22, 17)	<b>123.95 273.55</b> (12L-30R)	<b>S 121.9 348.6</b>	
	<b>126.95 335.65</b> (12R-30L)	<b>126.7 273.55</b> (12R-30L, 4-22)	<b>W 127.925 348.6</b>	

CPDLC



CATEGORY	A	B	C	D
RNP 0.15 DA		1191/40	349 (400-¾)	
RNP 0.30 DA		1251/45	409 (500-¾)	

**AUTHORIZATION REQUIRED**



NC-1, 07 OCT 2021 to 04 NOV 2021

NC-1, 07 OCT 2021 to 04 NOV 2021