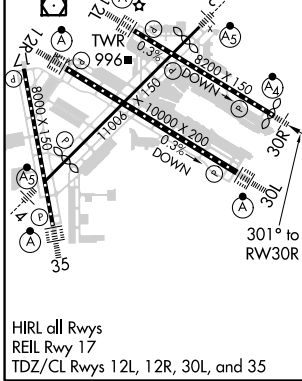
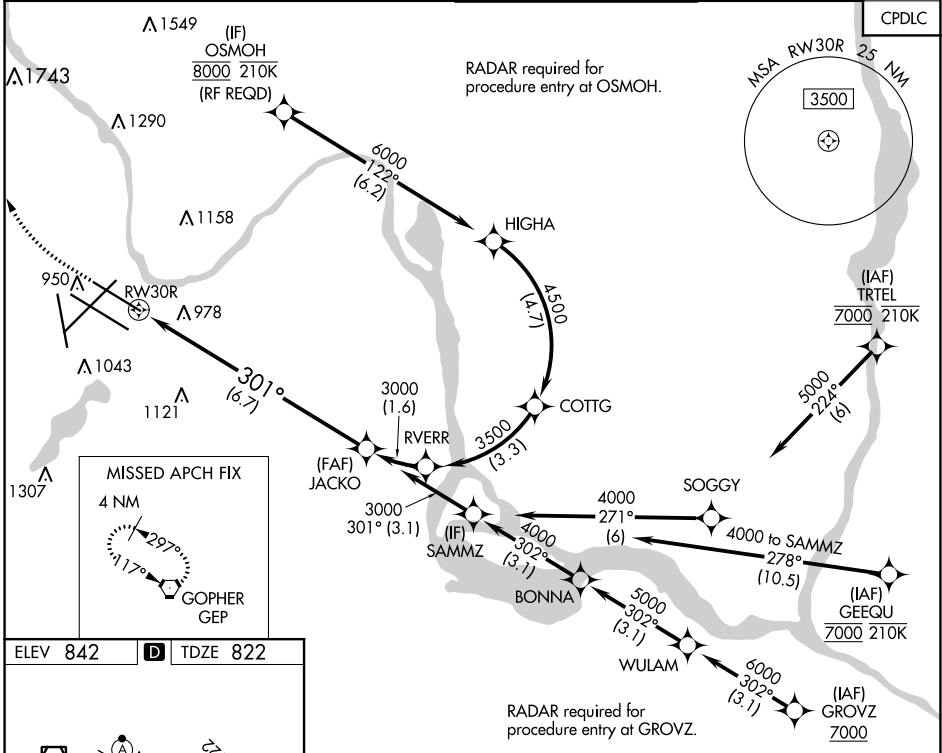


|             |          |             |
|-------------|----------|-------------|
| APP CRS     | Rwy Idg  | <b>8000</b> |
| <b>301°</b> | TDZE     | <b>822</b>  |
|             | Apt Elev | <b>842</b>  |

# RNAV (RNP) Y RWY 30R

MINNEAPOLIS-ST PAUL INTL/WOLD-CHAMBERLAIN (MSP)

|   |              |  |   |
|---|--------------|--|---|
| <p><b>▼</b> For uncompensated Baro-VNAV systems, procedure NA below -1°C (-2°F) or above 54°C (130°F). Simultaneous approach authorized with Rwy 30L and ILS V RWY 35 (CONVERGING). GPS required. For inop ALS, increase RNP 0.15 all Cats visibility to RVR 4500 and RNP 0.30 Cat D visibility to 1½ SM.</p> | <p>MALSF</p> | <p>MISSED APPROACH: Climb to 1300 then climbing right turn to 3000 direct GEP VORTAC and hold.</p> |   |
|   |              | <p>D-ATIS</p> <p>ARR <b>135.35</b> 239.275</p> <p>DEP <b>120.8</b></p>                             | <p>MINNEAPOLIS APP CON</p> <p><b>118.725 335.65</b> (Rwy 35)</p> <p><b>119.3 335.65</b> (12L-30R, 4-22, 17)</p> <p><b>126.95 335.65</b> (12R-30L)</p> |
|   |              |  | <p>CLNC DEL</p> <p><b>133.2</b></p>   |



|             |         |     |  |       |                    |
|-------------|---------|-----|--|-------|--------------------|
| 1300        | 3000    | GEP | VGSI and RNAV glidepath not coincident (VGSI Angle 3.00/TCH 71). See planview for multiple IF locations. | JACKO | 3000               |
|             |         |     |  |       | GP 3.00°<br>TCH 55 |
| 6.7 NM      |         |     |  |       |                    |
| CATEGORY    | A       | B   | C  | D     |                    |
| RNP 0.15 DA | 1097/40 |     | 275 (300-¾)  |       |                    |
| RNP 0.30 DA | 1298-1⅞ |     | 476 (500-1⅞)   |       |                    |

NC-1, 07 OCT 2021 to 04 NOV 2021

NC-1, 07 OCT 2021 to 04 NOV 2021