

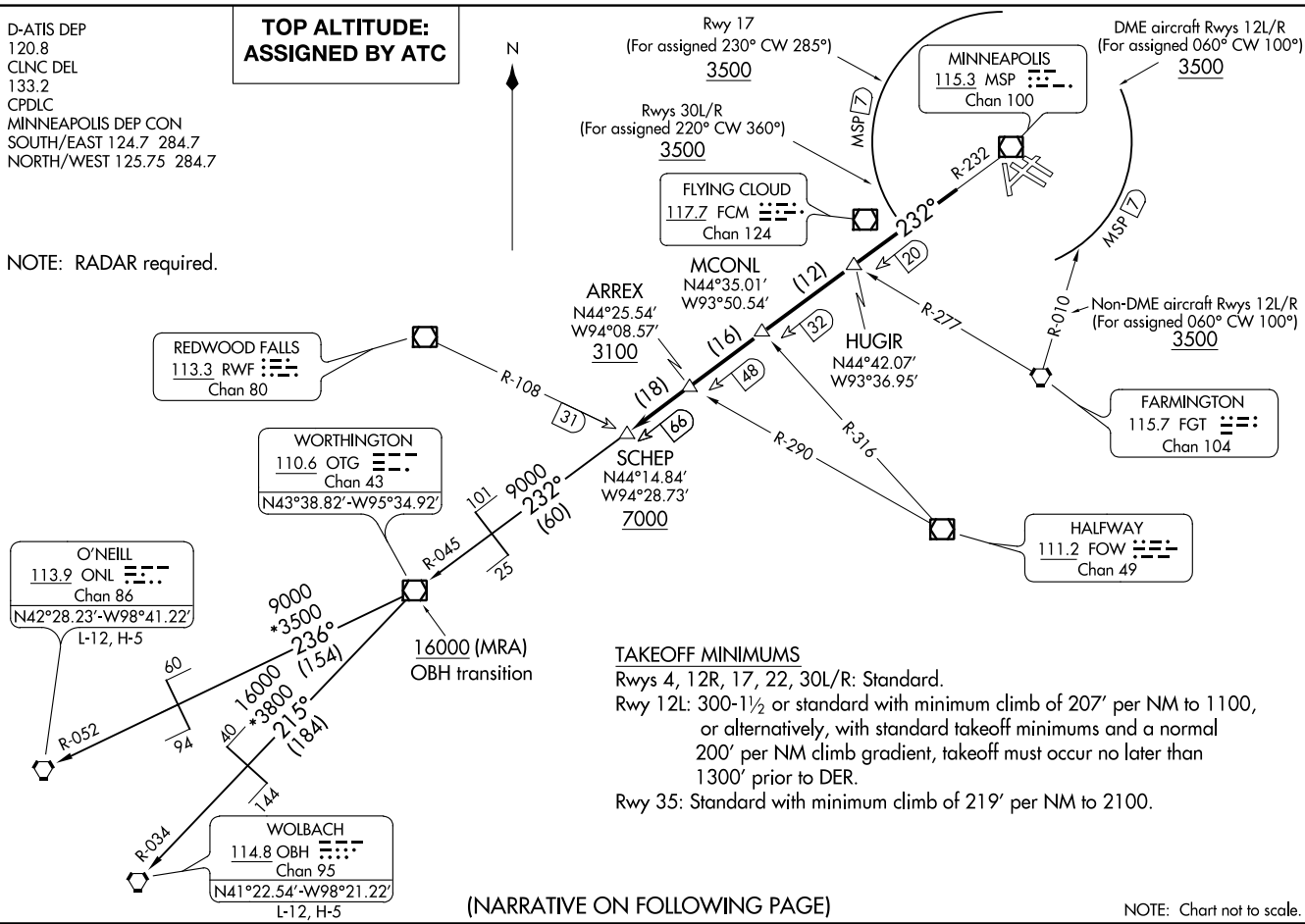
SCHEP NINE DEPARTURE
(SCHEP9, SCHEP) 17AUG17

MINNEAPOLIS, MINNESOTA
MINNEAPOLIS-ST PAUL INTL/WOLD-CHAMBERLAIN (MSP)

D-ATIS DEP
120.8
CLNC DEL
133.2
CPDLC
MINNEAPOLIS DEP CON
SOUTH/EAST 124.7 284.7
NORTH/WEST 125.75 284.7

**TOP ALTITUDE:
ASSIGNED BY ATC**

NOTE: RADAR required.



(NARRATIVE ON FOLLOWING PAGE)

NOTE: Chart not to scale.

SCHEP NINE DEPARTURE
(SCHEP9, SCHEP) 20086

MINNEAPOLIS-ST PAUL INTL/WOLD-CHAMBERLAIN (MSP)
AL-264 (FAA)
MINNEAPOLIS, MINNESOTA

SCHEP NINE DEPARTURE



DEPARTURE ROUTE DESCRIPTION

TAKEOFF ALL RUNWAYS: Fly assigned heading for RADAR vectors to MSP R-232 to SCHEP INT/MSP 66 DME. Maintain ATC assigned altitude.

DME EQUIPPED AIRCRAFT RUNWAYS 12L/R DEPARTURES: For assigned headings from 060° clockwise to 100°, cross MSP 7 DME at or above 3500, maintain assigned altitude. If unable to comply advise ATC as soon as possible prior to departure, thence

NON-DME EQUIPPED AIRCRAFT RUNWAYS 12L/R DEPARTURES: For assigned headings from 060° clockwise to 100°, cross FGT R-010 at or above 3500, maintain assigned altitude. If unable to comply, advise ATC as soon as possible prior to departure, thence

TAKEOFF RUNWAY 17 DEPARTURES: For assigned headings from 230° clockwise to 285° cross MSP 7 DME at or above 3500, maintain assigned altitude. If unable to comply, advise ATC as soon as possible prior to departure, thence

TAKEOFF RUNWAYS 30L/R DEPARTURES: For assigned headings from 220° clockwise to 360° cross MSP 7 DME at or above 3500, maintain assigned altitude. If unable to comply, advise ATC as soon as possible prior to departure, thence

TAKEOFF RUNWAYS 4, 22, 35: Initially assigned heading, thence

. . . .on transition or assigned route. Expect clearance to filed altitude/flight level 10 (ten) minutes after departure.

O'NEILL TRANSITION (SCHEP9.ONL): From over SCHEP INT on MSP R-232 and OTG R-045 to OTG VOR/DME, then on OTG R-236 and ONL R-052 to ONL VORTAC.

WOLBACH TRANSITION (SCHEP9.OBH): From over SCHEP INT on MSP R-232 and OTG R-045 to OTG VOR/DME, then on OTG R-215 and OBH R-034 to OBH VORTAC.

NC-1, 07 OCT 2021 to 04 NOV 2021

NC-1, 07 OCT 2021 to 04 NOV 2021