

SLAYER FOUR DEPARTURE (RNAV)

AL-264 (FAA)

MINNEAPOLIS, MINNESOTA

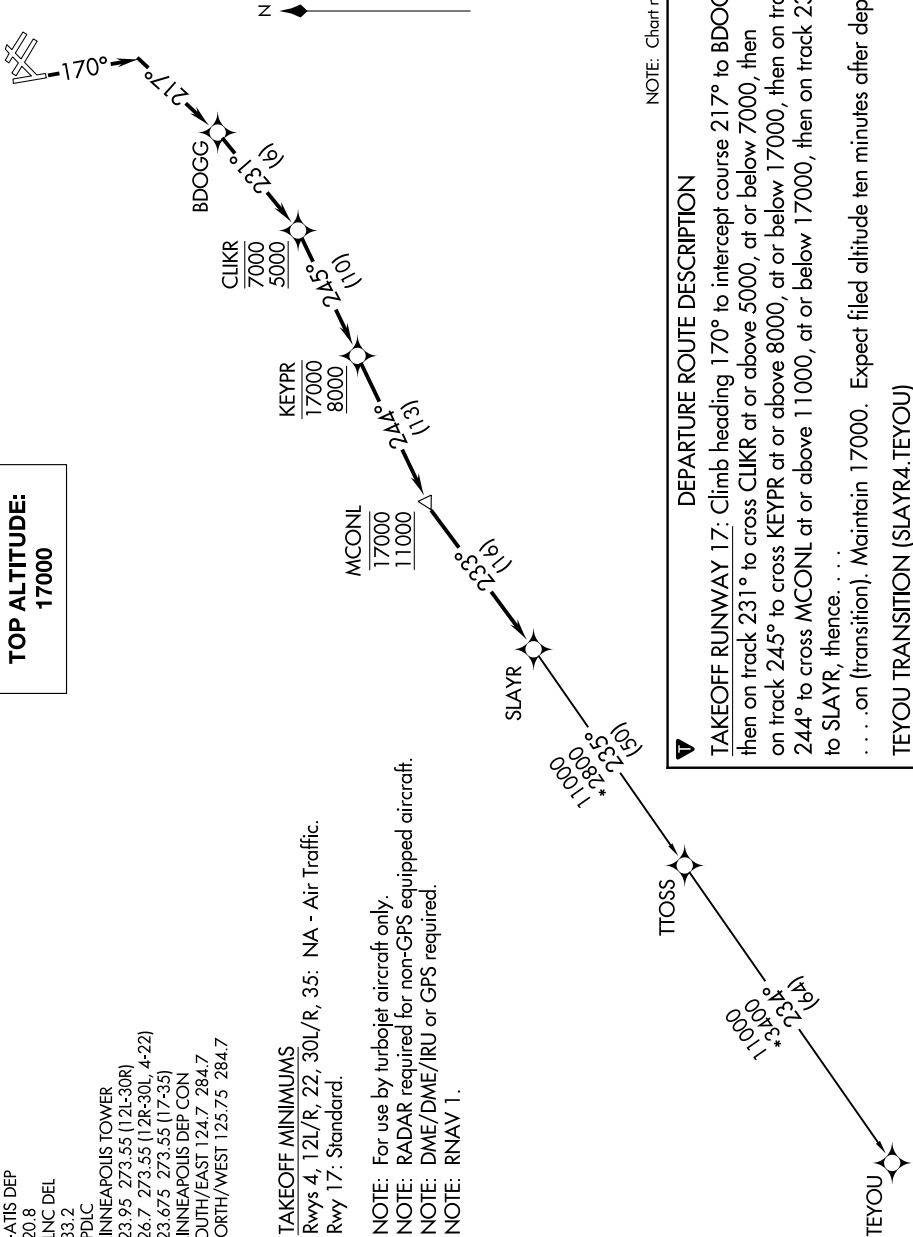
NC-1, 07 OCT 2021 to 04 NOV 2021

**TOP ALTITUDE:
17000**

D-ATIS DEP
120.8
CLNC DEL
133.2
CPDIC
MINNEAPOLIS TOWER
123.95 273.55 (12L-30R)
126.7 273.55 (12R-30L, 4-22)
123.675 273.55 (17-35)
MINNEAPOLIS DEP CON
SOUTH/EAST 124.7 284.7
NORTH/WEST 125.75 284.7

TAKEOFF MINIMUMS
Rwys 4, 12L/R, 22, 30L/R, 35: NA - Air Traffic.
Rwy 17: Standard.

NOTE: For use by turbojet aircraft only.
NOTE: RADAR required for non-GPS equipped aircraft.
NOTE: DME/DME/IRU or GPS required.
NOTE: RNAV 1.



NOTE: Chart not to scale.

DEPARTURE ROUTE DESCRIPTION

TAKEOFF RUNWAY 17: Climb heading 170° to intercept course 217° to BDOGG, then on track 231° to cross CLIKR at or above 5000, at or below 7000, then on track 245° to cross KEYPR at or above 8000, at or below 17000, then on track 244° to cross MCONL at or above 11000, at or below 17000, then on track 233° to SLAYR, thence. . . .
 . . . on (transition). Maintain 17000. Expect filed altitude ten minutes after departure.

TEYOU TRANSITION (SLAYR4.TEYOU)

SLAYER FOUR DEPARTURE (RNAV)

(SLAYR4.SLAYR) 17AUG17

MINNEAPOLIS, MINNESOTA

MINNEAPOLIS-ST PAUL INTL/WOLD-CHAMBERLAIN (MSP)

NC-1, 07 OCT 2021 to 04 NOV 2021