

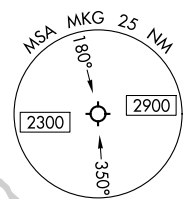
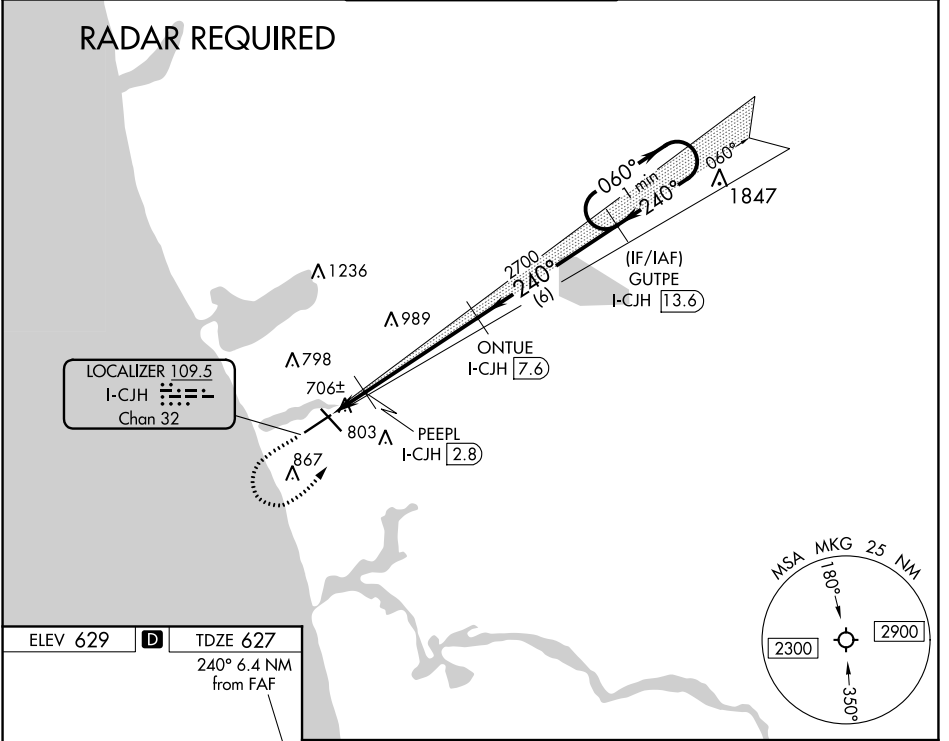
LOC/DME I-CJH 109.5 Chan 32	APP CRS 240°	Rwy Idg TDZE Apt Elev	6501 627 629
---	------------------------	-----------------------------	---

ILS or LOC RWY 24
MUSKEGON COUNTY (MKG)

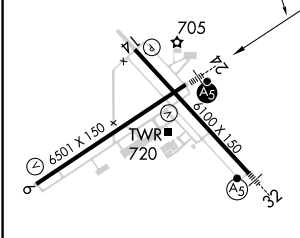
	DME required. RADAR required. RNAV 1-GPS required.		MISSED APPROACH: Climb to 2500 then climbing left turn to 3000 direct GUTPE and hold.

ATIS 124.3	GREAT LAKES APP CON ★ 119.8 290.35 (North) 133.825 290.35 (South)	MUSKEGON TOWER ★ 126.25 (CTAF) 343.725	GND CON 121.6	UNICOM 122.95
----------------------	---	---	-------------------------	-------------------------

RADAR REQUIRED



ELEV 629	TDZE 627
240° 6.4 NM from FAF	



REIL Rwy 6

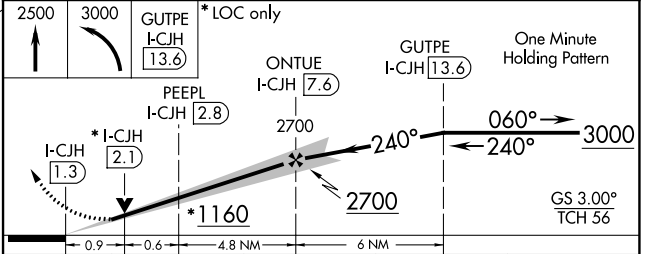
REIL Rwy 14

HIRL Rwys 6-24

HIRL Rwys 14-32

FAF to MAP 6.3 NM

Knots	60	90	120	150	180
Min:Sec	6:18	4:12	3:09	2:31	2:06



CATEGORY	A	B	C	D
S-ILS 24		827-½	200 (200-½)	
S-LOC 24		960-½	333 (400-½)	
CIRCLING	1080-1	1180-1	1200-1½	1200-2
	451 (500-1)	551 (600-1)	571 (600-1½)	571 (600-2)

EC-1, 07 OCT 2021 to 04 NOV 2021

EC-1, 07 OCT 2021 to 04 NOV 2021