

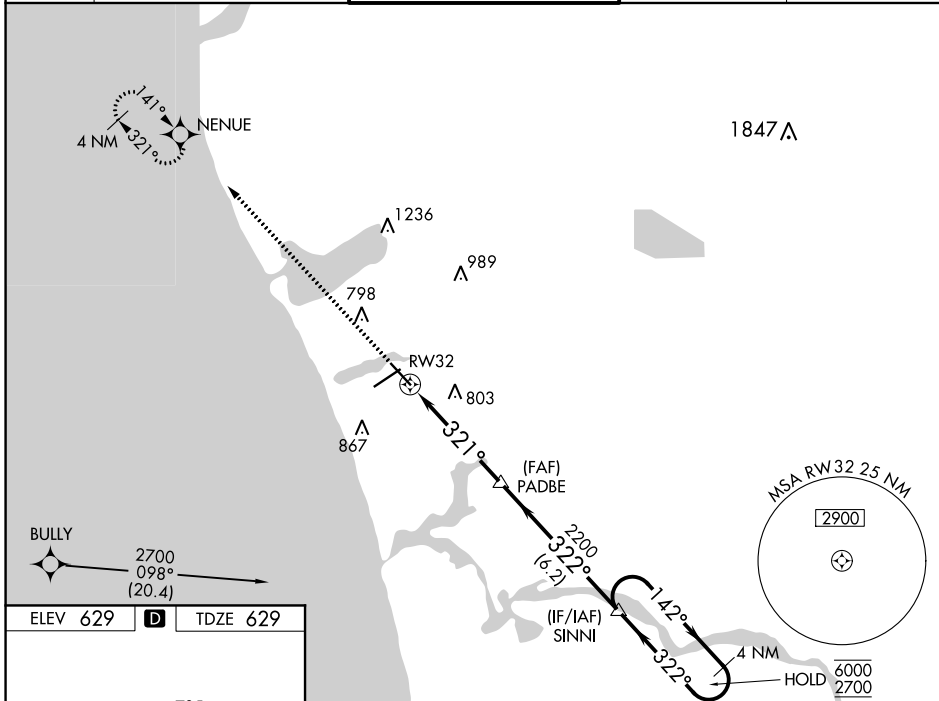
WAAS CH 63010 W32A	APP CRS 321°	Rwy Idg TDZE Apt Elev	6100 629 629
--	------------------------	-----------------------------	---

RNAV (GPS) RWY 32

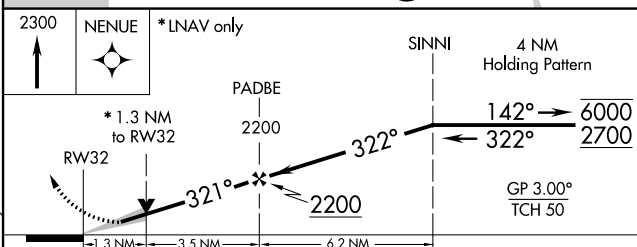
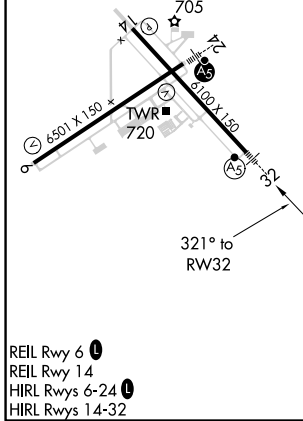
MUSKEGON COUNTY (MKG)

RNP APCH.	MALSRL	MISSED APPROACH: Climb to 2300 direct NENUE and hold.
<p>▼ For uncompensated Baro-VNAV systems, LNAV/VNAV NA below -18°C or above 54°C.</p> <p>▲ For inop ALS, increase LPV visibility all Cats to RVR 4000, LNAV/VNAV visibility all Cats to RVR 4500, and LNAV visibility Cats A/B to RVR 5500 and Cats C/D to 1½ SM.</p> <p>ASR ** RVR 1800 authorized with use of FD or AP or HUD to DA, NA when using Fremont altimeter setting.</p>		

ATIS 124.3	GREAT LAKES APP CON * 119.8 290.35 (North) 133.825 290.35 (South)	MUSKEGON TOWER * 126.25 (CTAF) 343.725	GND CON 121.6	UNICOM 122.95
----------------------	---	---	-------------------------	-------------------------



ELEV 629	D	TDZE 629
-----------------	----------	-----------------



CATEGORY	A		B	C	D
LPV DA**	829/24		200 (200-½)		
LNAV/VNAV DA	915/24		286 (300-½)		
LNAV MDA	1080/24	451 (500-½)	1080/45	451 (500-¾)	
C CIRCLING	1080-1 451 (500-1)	1180-1 551 (600-1)	1200-1½ 571 (600-1½)	1200-2 571 (600-2)	