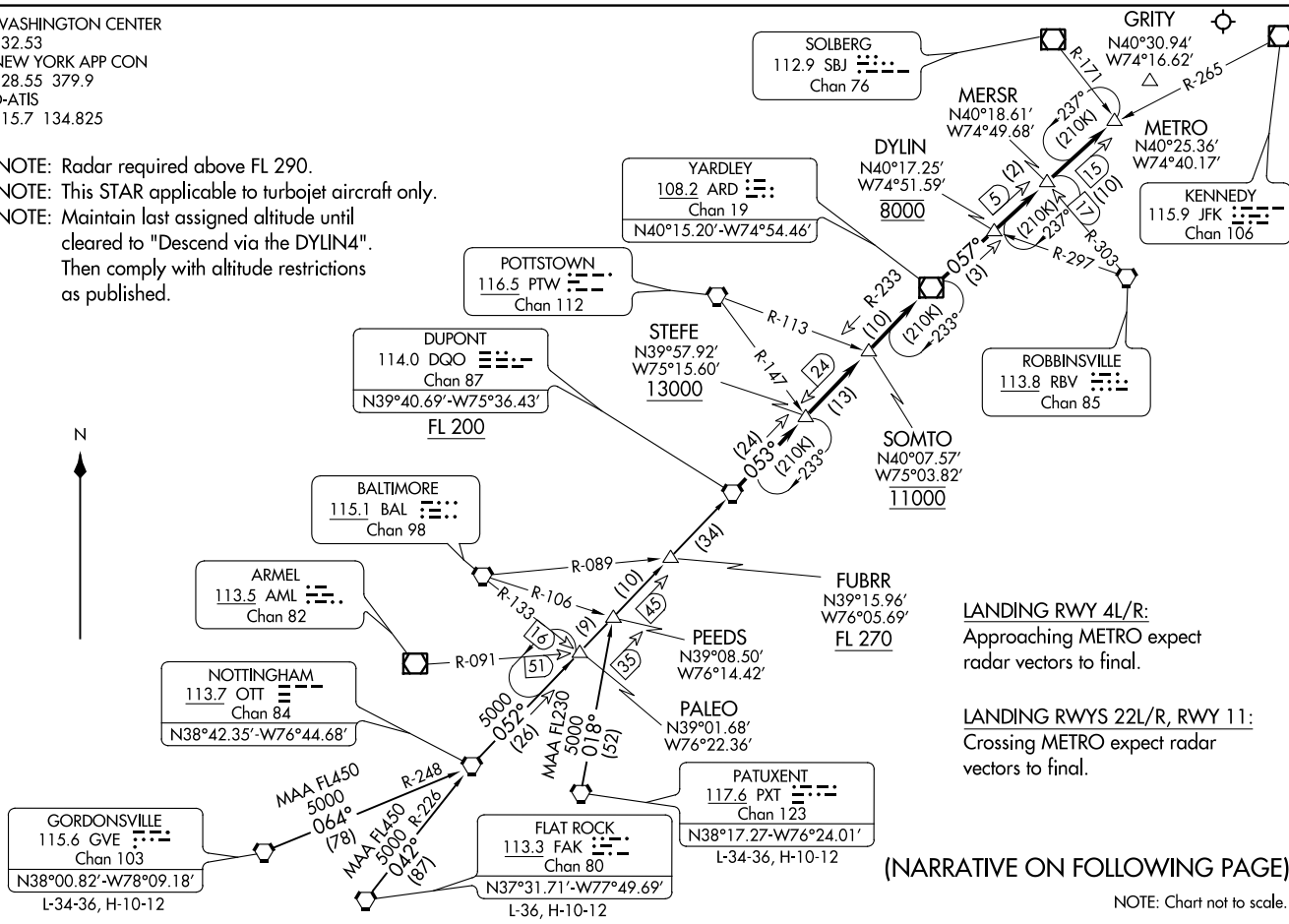


DYLIN FOUR ARRIVAL
(DQO.DYLIN4) 10APR08

WASHINGTON CENTER
132.53
NEW YORK APP CON
128.55 379.9
D-ATIS
115.7 134.825

NOTE: Radar required above FL 290.
NOTE: This STAR applicable to turbojet aircraft only.
NOTE: Maintain last assigned altitude until cleared to "Descend via the DYLIN4".
Then comply with altitude restrictions as published.



LANDING RWY 4L/R:
Approaching METRO expect radar vectors to final.

LANDING RWYS 22L/R, RWY 11:
Crossing METRO expect radar vectors to final.

(NARRATIVE ON FOLLOWING PAGE)

NOTE: Chart not to scale.

DYLIN FOUR ARRIVAL
(DQO.DYLIN4) 21168

AL-285 (FAA)

NEWARK LIBERTY INTL (E/W/R)
NEWARK, NEW JERSEY

NEWARK LIBERTY INTL (E/W/R)
NEWARK, NEW JERSEY

ARRIVAL ROUTE DESCRIPTION

FLAT ROCK TRANSITION (FAK.DYLIN4): From over FAK VORTAC via FAK R-042 and OTT R-226 to OTT VORTAC, then via OTT R-052 to DQO VORTAC.

Thence. . . .

GORDONSVILLE TRANSITION (GVE.DYLIN4): From over GVE VORTAC via GVE R-064 and OTT R-248 to OTT VORTAC, then via OTT R-052 to DQO VORTAC.

Thence. . . .

PATUXENT TRANSITION (PXT.DYLIN4): From over PXT VORTAC via R-018 to PEEDS INT, then via OTT R-052 to DQO VORTAC. Thence. . . .

. . . . from DQO VORTAC, then via DQO R-053 and ARD R-233 to ARD VOR/DME, then via ARD R-057 to METRO INT. Expect radar vectors to final approach course.

NE-2, 07 OCT 2021 to 04 NOV 2021

NE-2, 07 OCT 2021 to 04 NOV 2021