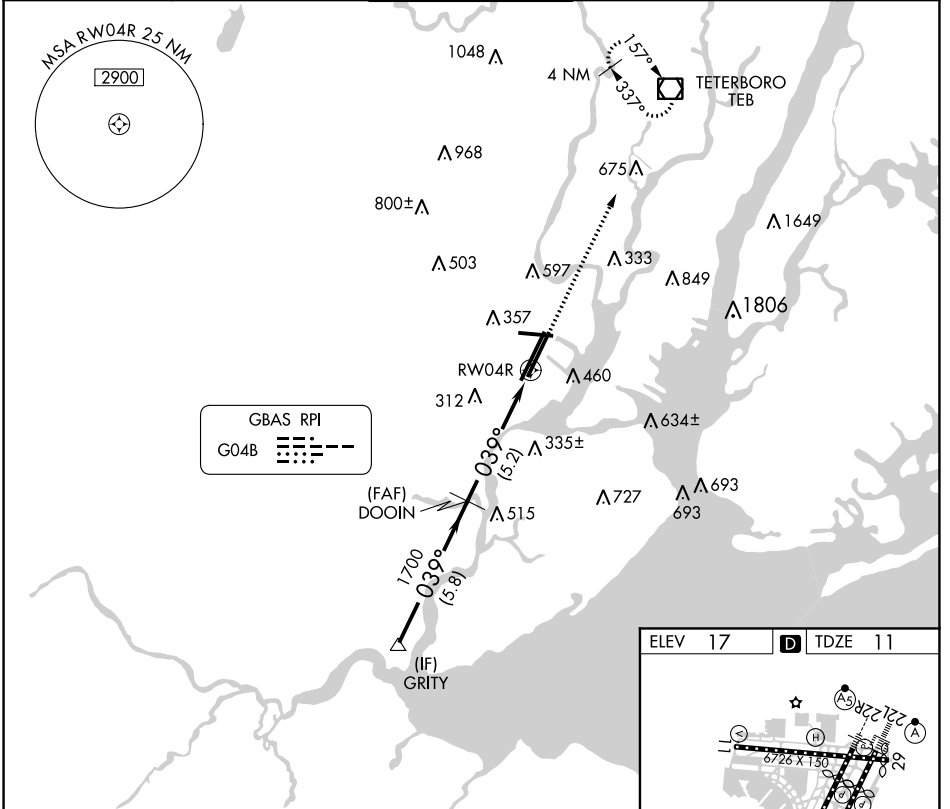


GBAS CH <b>21083</b> <b>G04B</b>	APP CRS <b>039°</b>	Rwy Idg <b>8810</b> TDZE <b>11</b> Apt Elev <b>17</b>
--	------------------------	---

# GLS RWY 4R

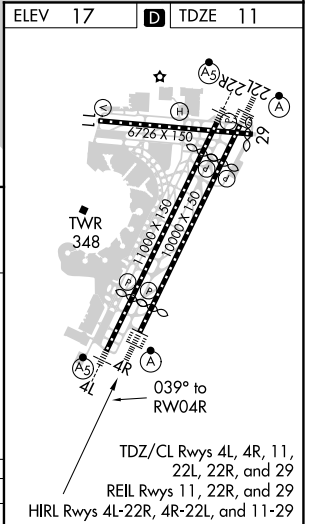
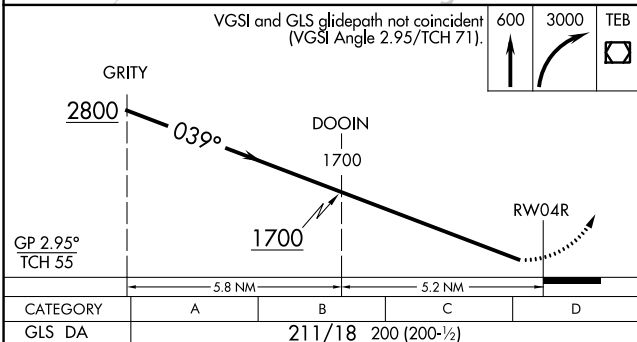
NEWARK LIBERTY INTL (EWR)

RNP APCH. GPS required.		ALSF-2 	MISSED APPROACH: Climb to 600 then climbing right turn to 3000 direct TEB VOR/DME and hold, continue climb-in-hold in 3000.		
	Autopilot coupled approach NA below 211.				
D-ATIS <b>115.7 134.825</b>	NEW YORK APP CON <b>128.55 379.9</b>	<b>NEWARK TOWER</b> <b>118.3 257.6</b>	GND CON <b>121.8</b>	CLNC DEL <b>118.85</b>	CPDLC



NE-2, 07 OCT 2021 to 04 NOV 2021

NE-2, 07 OCT 2021 to 04 NOV 2021



# GLS RWY 4R