

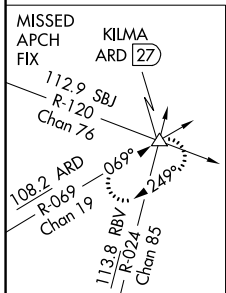
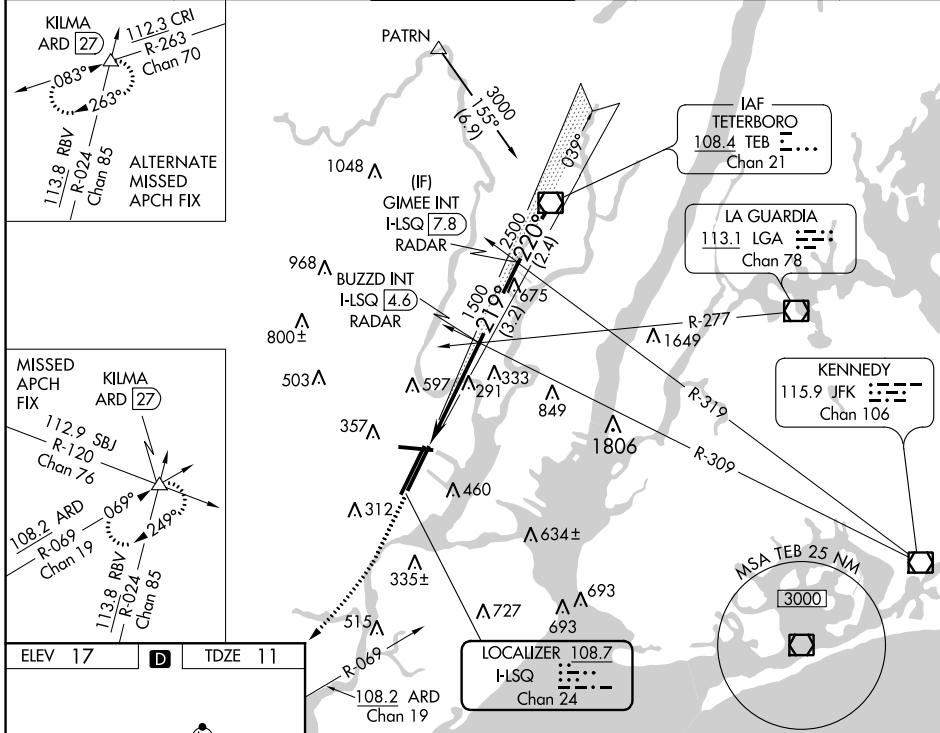
LOC/DME I-LSQ	APP CRS	Rwy Idg	8207
108.7	219°	TDZE	11
Chan 24		Apt Elev	17

ILS RWY 22L (CAT II & III)

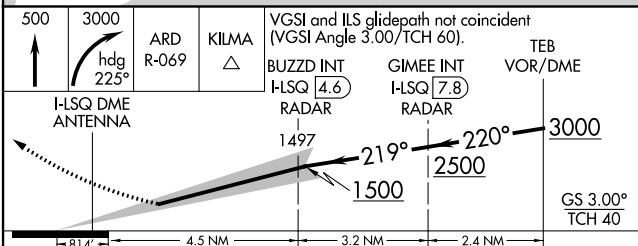
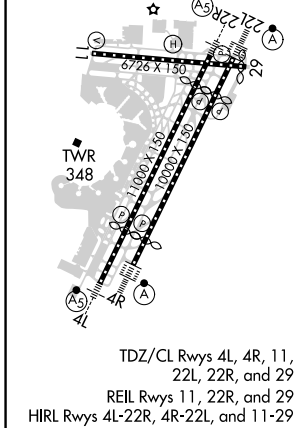
NEWARK LIBERTY INTL (EWR)

<p>▼ CAT II: RVR 1000 authorized with specific OPSPEC, MSPEC, or LOA approval and use of autoland or HUD to touchdown.</p> <p>▲</p>	<p>ALSF-2</p>	<p>MISSED APPROACH: Climb to 500 then climbing right turn to 3000 on heading 225° and ARD VOR/DME R-069 to KILMA INT/ARD 27 DME and hold.</p>
---	---------------	---

D-ATIS	NEW YORK APP CON	NEWARK TOWER	GND CON	CLNC DEL	CPDLC
115.7 134.825	128.55 379.9	118.3 257.6	121.8	118.85	



ELEV 17	D	TDZE 11
---------	----------	---------



CATEGORY	A	B	C	D
S-ILS 22L	CAT II RA 102/12 100 DA 111			
S-ILS 22L	CAT IIIa RVR 07			
S-ILS 22L	CAT IIIb RVR 06			
S-ILS 22L	CAT IIIc NA			

CATEGORY II & III ILS - SPECIAL AIRCREW & AIRCRAFT CERTIFICATION REQUIRED

NE-2, 07 OCT 2021 to 04 NOV 2021

NE-2, 07 OCT 2021 to 04 NOV 2021