

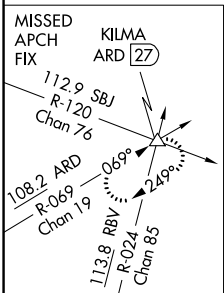
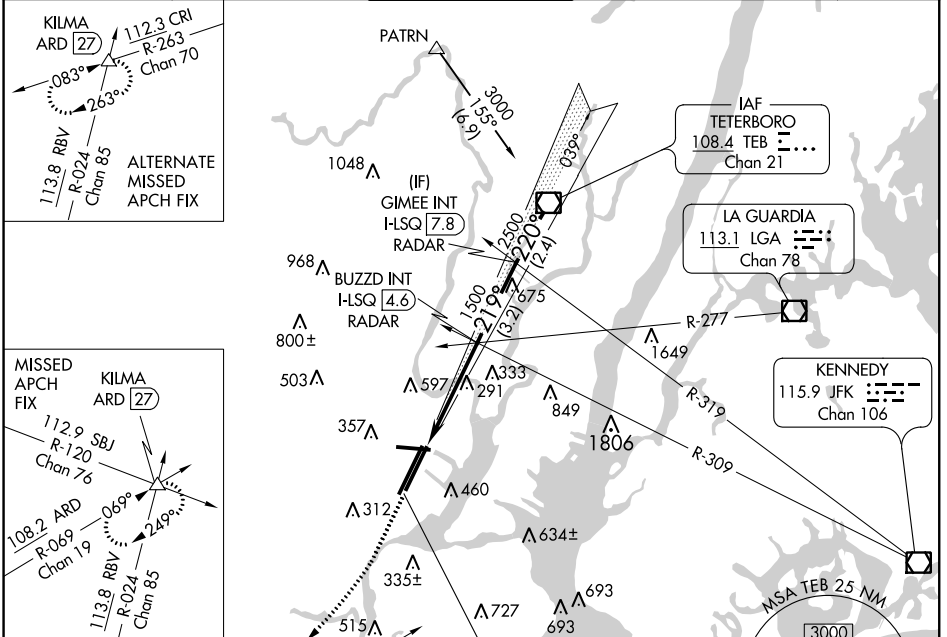
LOC/DME I-LSQ 108.7 Chan 24	APP CRS 219°	Rwy Idg TDZE Apt Elev	8207 11 17
---	------------------------	-----------------------------	---------------------------------------

ILS RWY 22L (SA CAT I)

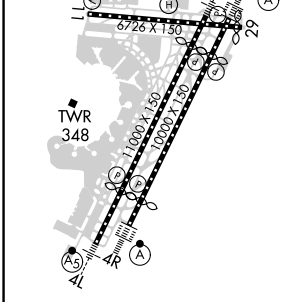
NEWARK LIBERTY INTL (EWR)

<p>▼ Requires specific OPSPEC, MSPEC, or LOA approval and use of HUD to DH.</p> <p>▲</p>	<p>ALSF-2</p>	<p>MISSED APPROACH: Climb to 500 then climbing right turn to 3000 on heading 225° and ARD VOR/DME R-069 to KILMA INT/ARD 27 DME and hold.</p>
--	---------------	---

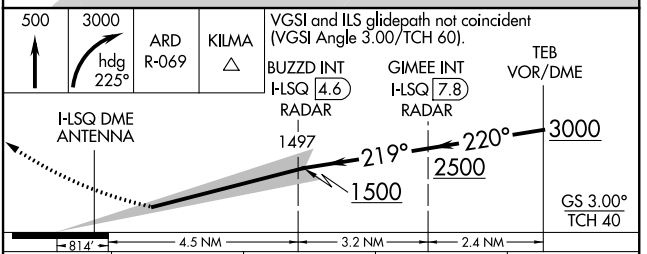
D-ATIS 115.7 134.825	NEW YORK APP CON 128.55 379.9	NEWARK TOWER 118.3 257.6	GND CON 121.8	CLNC DEL 118.85	CPDLC
--------------------------------	---	------------------------------------	-------------------------	---------------------------	-------



ELEV 17	D	TDZE 11
---------	----------	---------



TDZ/CL Rwsy 4L, 4R, 11, 22L, 22R, and 29
REIL Rwsy 11, 22R, and 29
HIRL Rwsy 4L-22R, 4R-22L, and 11-29



CATEGORY	A	B	C	D
S-ILS 22L	RA 152/14 150 DA 161			

SA CATEGORY I ILS - SPECIAL AIRCREW & AIRCRAFT CERTIFICATION REQUIRED

NE-2, 07 OCT 2021 to 04 NOV 2021

NE-2, 07 OCT 2021 to 04 NOV 2021