

LOC/DME I-GPR 109.15 Chan 28 (Y)	APP CRS 107°	Rwy ldg 6726 TDZE 17 Apt Elev 17
---	------------------------	---

ILS or LOC RWY 11

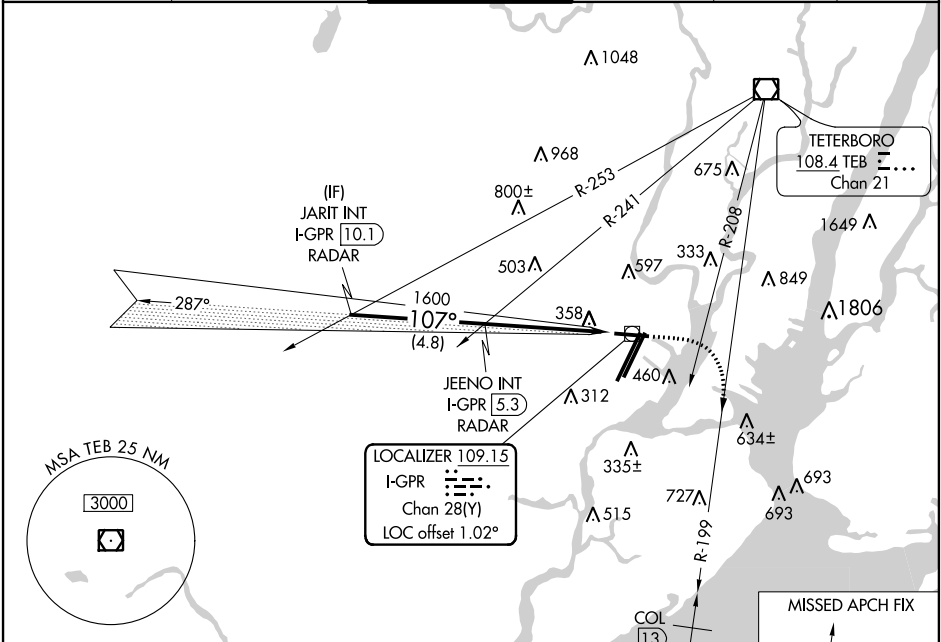
NEWARK LIBERTY INTL (EWR)

DME required. RADAR required for procedure entry.

MISSED APPROACH: Climb to 1700 heading 107°, at TEB VOR/DME R-208 right turn to intercept TEB VOR/DME R-199 and COL VOR/DME R-019 to COL VOR/DME and hold. At COL 13 DME climb to 3000.

When Circling to Rwy 29 at night, operational VGSi required, remain on or above VGSi glidepath until threshold.

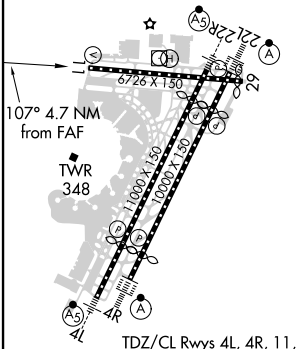
D-ATIS 115.7 134.825	NEW YORK APP CON 128.55 379.9	NEWARK TOWER 118.3 257.6	GND CON 121.8	CLNC DEL 118.85	CPDLC
--------------------------------	---	------------------------------------	-------------------------	---------------------------	-------



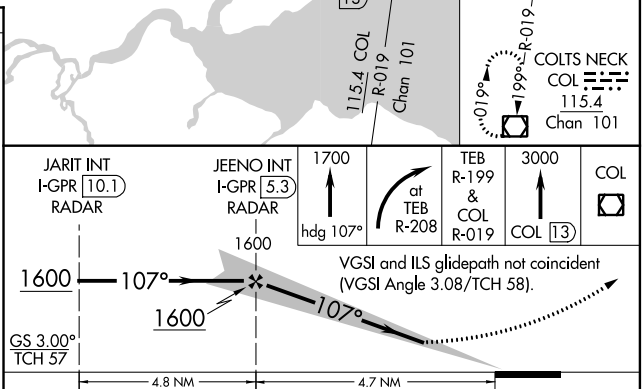
NE-2, 07 OCT 2021 to 04 NOV 2021

NE-2, 07 OCT 2021 to 04 NOV 2021

ELEV 17	D	TDZE 17
---------	----------	---------



TDZ/CL Rwys 4L, 4R, 11, 22L, 22R, and 29					
REIL Rwys 11, 22R and 29					
HIRL Rwys 4L-22R, 4R-22L and 11-29					
FAF to MAP 4.7 NM					
Knots	60	90	120	150	180
Min:Sec	4:42	3:08	2:21	1:53	1:34



CATEGORY	A	B	C	D
S- ILS 11	603-2 586 (600-2)			
S- LOC 11	580/50	563 (600-1)	580-1½ 563 (600-1½)	580-1¾ 563 (600-1¾)
C CIRCLING	760-1 743 (800-1)	820-1 803 (900-1)	900-2¾ 883 (900-2¾)	900-3 883 (900-3)