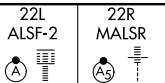


# ILS or LOC RWY 22L

NEWARK LIBERTY INTL (EWR)

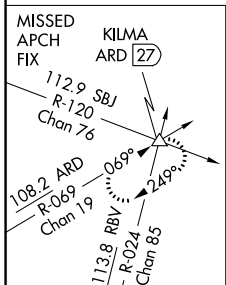
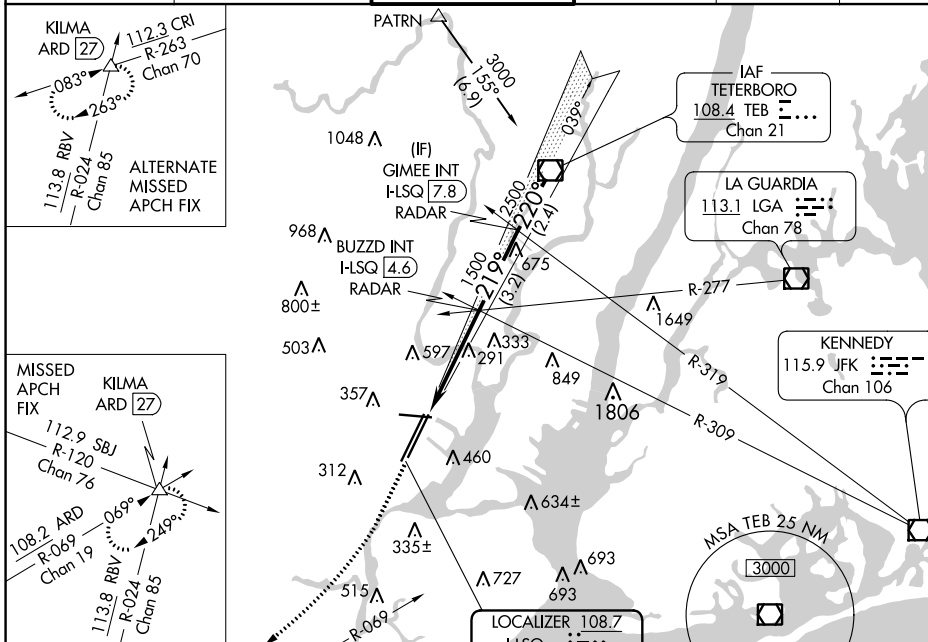
LOC/DME ILSQ	APP CRS	Rwy Idg	22L	22R
<b>108.7</b>	<b>219°</b>	TDZE	<b>8207</b>	<b>9560</b>
Chan <b>24</b>		Apt Elev	<b>11</b>	<b>10</b>

When Circling to Rwy 29 at night, operational VGSi required, remain on or above VGSi glidepath until threshold. Inop table does not apply to sidestep Rwy 22R Cats A/B.

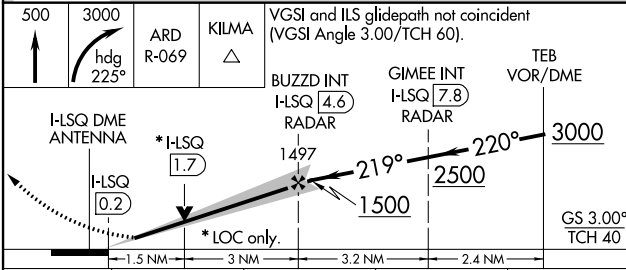
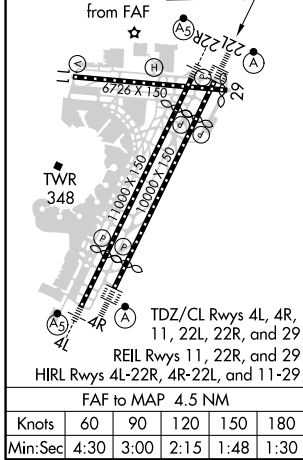


**MISSED APPROACH:** Climb to 500 then climbing right turn to 3000 on heading 225° and ARD VOR/DME R-069 to KILMA INT/ARD 27 DME and hold.

D-ATIS	NEW YORK APP CON	NEWARK TOWER	GND CON	CLNC DEL	CPDLC
<b>115.7 134.825</b>	<b>128.55 379.9</b>	<b>118.3 257.6</b>	<b>121.8</b>	<b>118.85</b>	



ELEV 17	<b>D</b>	TDZE 22L 11	TDZE 22R 10
---------	----------	-------------	-------------



CATEGORY	A	B	C	D
S-ILS 22L	211/18 200 (200-½)			
S-LOC 22L	560/24	549 (600-½)	560/60	549 (600-1¼)
SIDESTEP Rwy 22R	560/50	550 (600-1)	560/60 550 (600-1¼)	560-1½ 550 (600-1½)
<b>C</b> CIRCLING	760-1 743 (800-1)	820-1 803 (900-1)	900-2¾ 883 (900-2¾)	900-3 883 (900-3)

NE-2, 07 OCT 2021 to 04 NOV 2021

NE-2, 07 OCT 2021 to 04 NOV 2021