

ILS or LOC RWY 4R

NEWARK LIBERTY INTL (EWR)

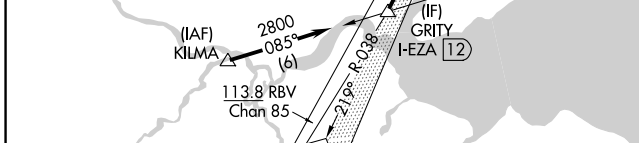
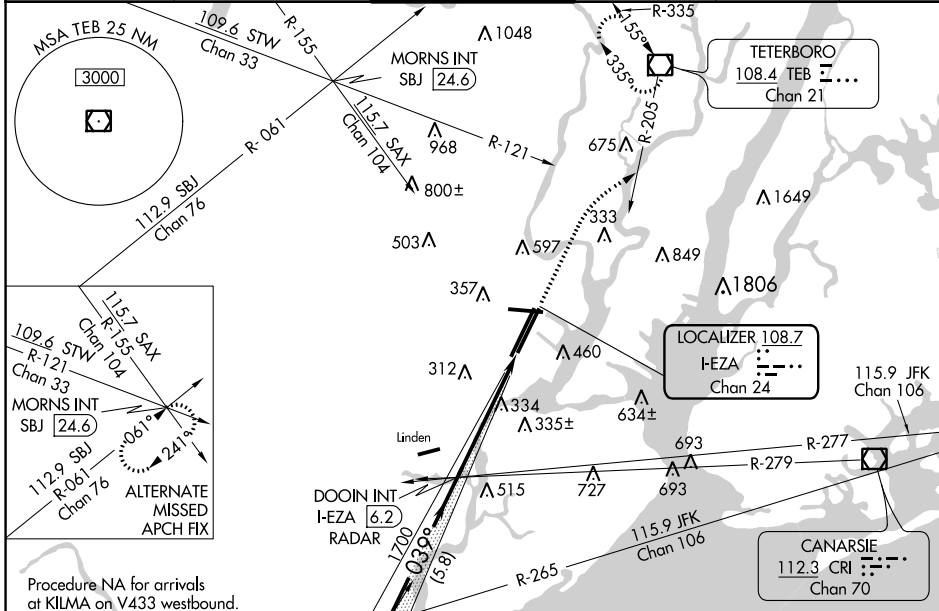
LOC/DME I-EZA	APP CRS	Rwy Idg	4R 8810	4L 8460
108.7	039°	TDZE	11	10
Chan 24		Apt Elev	17	17

▼ Inoperative table does not apply to sidestep 4L Cats A and B.
▲ For inoperative MALSRS, increase sidestep 4L Cat C visibility to 1 3/4 mile. When Circling to Rwy 29 at night, operational VGSI required, remain on or above VGSI glidepath until threshold.

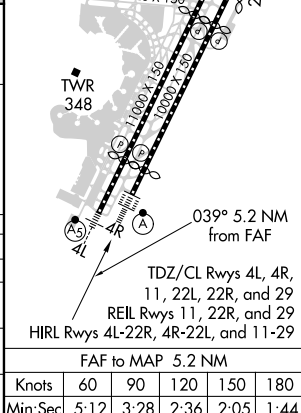


MISSED APPROACH: Climb to 600 then climbing right turn to 2500 on heading 060° and TEB VOR/DME R-205 to TEB VOR/DME and hold.

D-ATIS	NEW YORK APP CON	NEWARK TOWER	GND CON	CLNC DEL	CPDLC
115.7 134.825	128.55 379.9	118.3 257.6	121.8	118.85	



ELEV 17	D	TDZE 4R 11
		TDZE 4L 10



GRITY I-EZA 12	DOOIN INT I-EZA 6.2	RADAR	*I-EZA 2.6	I-EZA 1
2800	1700			
GS 2.95° TCH 55	5.8 NM	3.6 NM	1.6 NM	
CATEGORY	A	B	C	D
S-ILS 4R	211/18 200 (200-1/2)			
S-LOC 4R	600/24	589 (600-1/2)	600/60	589 (600-1 1/4)
SIDESTEP RWY 4L	620/50	610 (700-1)	620-1 3/8 610 (700-1 3/8)	620-1 1/2 610 (700-1 1/2)
C CIRCLING	760-1 743 (800-1)	820-1 803 (900-1)	900-2 3/4 883 (900-2 3/4)	900-3 883 (900-3)

NE-2, 07 OCT 2021 to 04 NOV 2021

NE-2, 07 OCT 2021 to 04 NOV 2021