

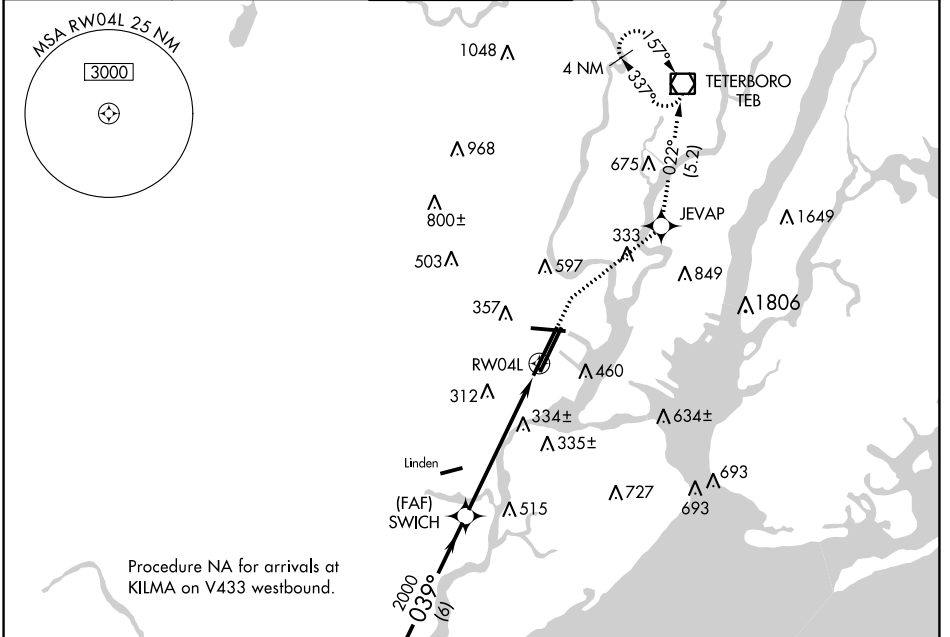
RNAV (GPS) RWY 4L

NEWARK LIBERTY INTL (EWR)

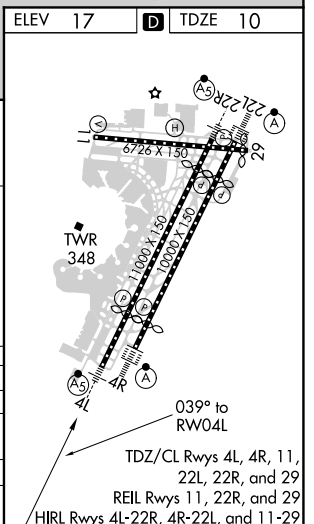
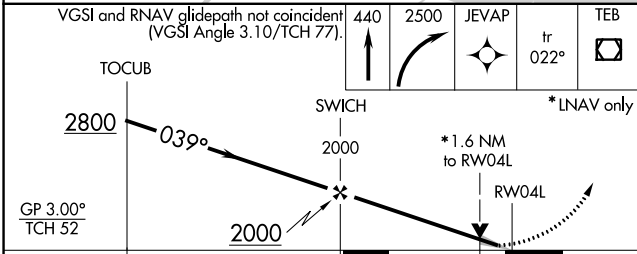
WAAS CH 56224 W04A	APP CRS 039°	Rwy Idg 8460 TDZE 10 Apt Elev 17
--	------------------------	---

RNP APCH. ▼ For uncompensated Baro-VNAV systems, LNAV/VNAV NA below -1.3°C or above 54°C. For inop ALS, increase LPV all Cats visibility to RVR 5500. ▲ When Circling to Rwy 29 at night, operational VGSI required, remain on or above VGSI glidepath until threshold.	MALSR 	MISSED APPROACH: Climb to 440 then climbing right turn to 2500 direct JEVAP and on track 022° to TEB VOR/DME and hold.
---	-----------	--

D-ATIS 115.7 134.825	NEW YORK APP CON 128.55 379.9	NEWARK TOWER 118.3 257.6	GND CON 121.8	CLNC DEL 118.85	CPDLC
--------------------------------	---	------------------------------------	-------------------------	---------------------------	-------



ELEV 17	D	TDZE 10
---------	---	---------



CATEGORY	A	B	C	D
LPV DA		379/35	369 (400- $\frac{3}{8}$)	
LNAV/ VNAV DA		470/50	460 (500-1)	
LNAV MDA	600/24	590 (600- $\frac{1}{2}$)	600-1 $\frac{1}{4}$	590 (600-1 $\frac{1}{4}$)
CIRCLING	760-1 743 (800-1)	820-1 803 (900-1)	900-2 $\frac{3}{4}$ 883 (900-2 $\frac{3}{4}$)	900-3 883 (900-3)

NE-2, 07 OCT 2021 to 04 NOV 2021

NE-2, 07 OCT 2021 to 04 NOV 2021