

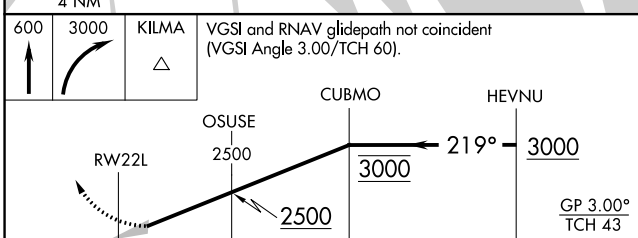
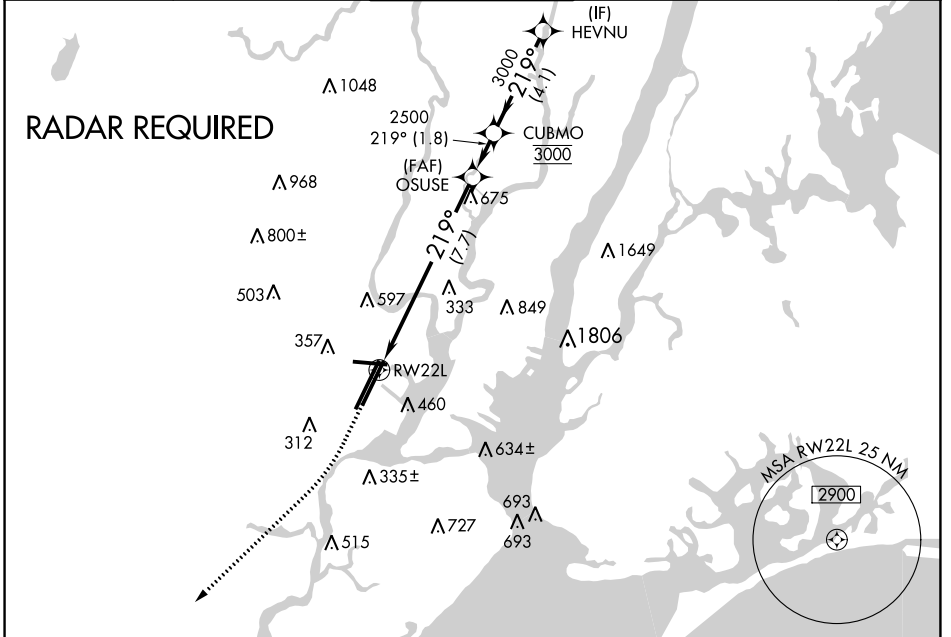
APP CRS 219°	Rwy Idg 8207
	TDZE 11
	Apt Elev 17

RNAV (RNP) Y RWY 22L

NEWARK LIBERTY INTL (EWR)

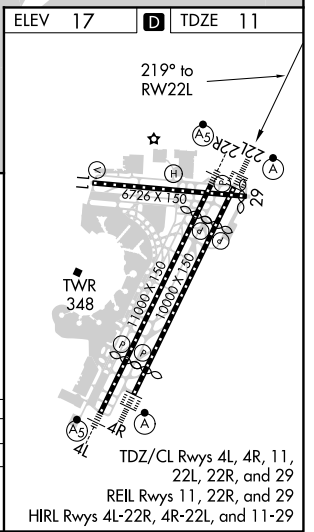
For uncompensated Baro-VNAV systems, procedure NA below -13°C (9°F) or above 54°C (130°F). GPS required.	ALSF-2 	MISSED APPROACH: Climb to 600 then climbing right turn to 3000 direct KILMA and hold.

D-ATIS 115.7 134.825	NEW YORK APP CON 128.55 379.9	NEWARK TOWER 118.3 257.6	GND CON 121.8	CLNC DEL 118.85	CPDLC
--------------------------------	---	------------------------------------	-------------------------	---------------------------	-------



CATEGORY	A	B	C	D
RNP 0.30 DA	436/50		425 (500-1)	

AUTHORIZATION REQUIRED



NE-2, 07 OCT 2021 to 04 NOV 2021

NE-2, 07 OCT 2021 to 04 NOV 2021