

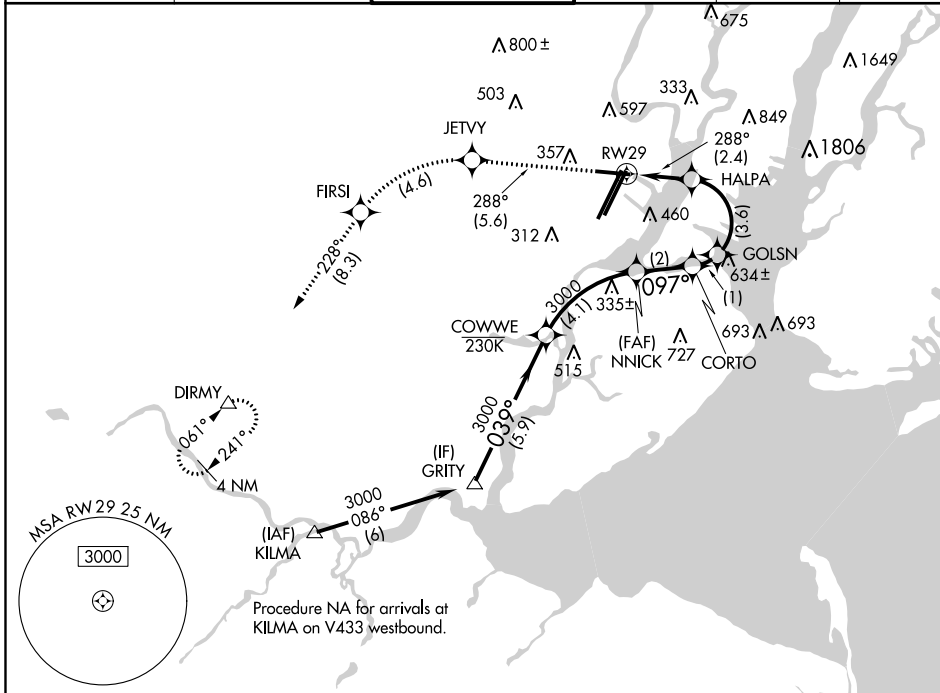
# RNAV (RNP) Z RWY 29

NEWARK LIBERTY INTL (EWR)

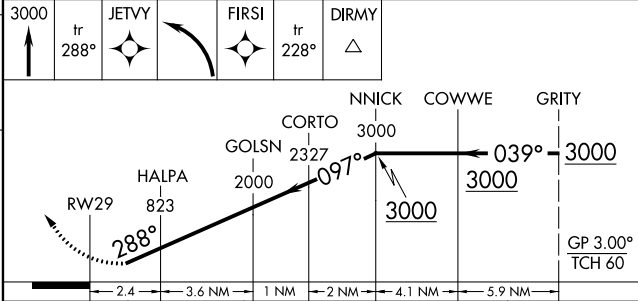
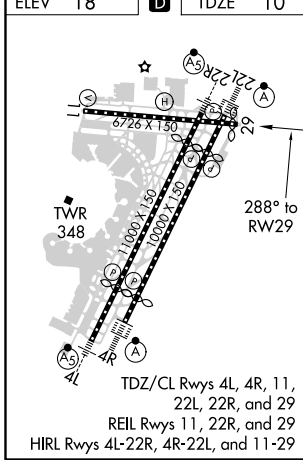
APP CRS	Rwy Idg	<b>6502</b>
<b>288°</b>	TDZE	<b>10</b>
	Apt Elev	<b>18</b>

RNP AR APCH. RF required.		MISSED APPROACH: Climb to 3000 on track 288° to JETVY and left turn to FIRSI, and on track 228° to DIRMY and hold.	
<p>▼ Straight-in Rwy 29 at night, operational VGSI required, remain on or above VGSI glidepath until threshold. For uncompensated Baro-VNAV systems, procedure NA below -14°C or above 54°C.</p> <p>▲ NA *Missed approach requires minimum climb of 340 feet per NM to 800.</p>			

D-ATIS	NEW YORK APP CON	NEWARK TOWER	GND CON	CLNC DEL	CPDLC
<b>115.7</b>	<b>134.825</b>	<b>128.55 379.9</b>	<b>118.3 257.6</b>	<b>118.85</b>	



ELEV	<b>18</b>	<b>D</b>	TDZE	<b>10</b>
------	-----------	----------	------	-----------



CATEGORY	A	B	C	D
RNP 0.16 DA	466-1½	456 (500-1½)		NA
*RNP 0.30 DA	485-1½	475 (500-1½)		NA
RNP 0.30 DA	573-2	563 (600-2)		NA

**AUTHORIZATION REQUIRED**

# RNAV (RNP) Z RWY 29

NE-2, 07 OCT 2021 to 04 NOV 2021

NE-2, 07 OCT 2021 to 04 NOV 2021