

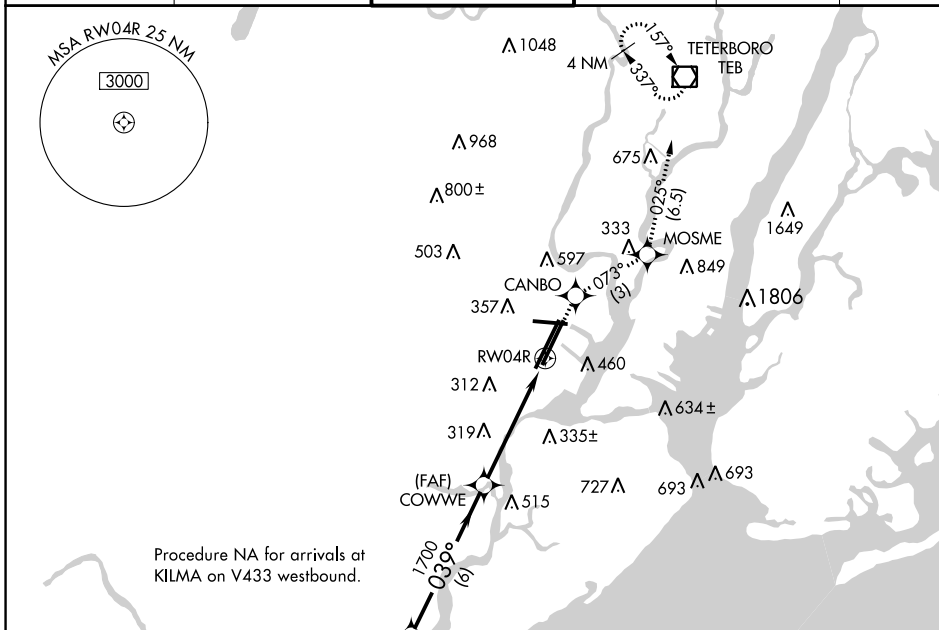
# RNAV (GPS) Y RWY 4R

NEWARK LIBERTY INTL (EWR)

WAAS CH <b>60924</b> <b>W04B</b>	APP CRS <b>039°</b>	Rwy Idg <b>8810</b> TDZE <b>11</b> Apt Elev <b>17</b>
--	------------------------	---

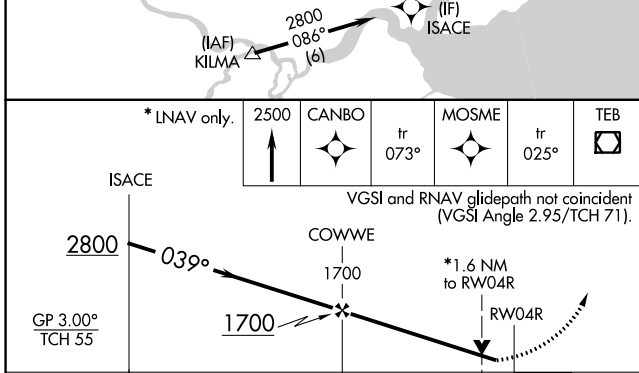
RNP APCH	ALSF-2	MISSED APPROACH: Climb to 2500 direct CANBO and on track 073° to MOSME and on track 025° to TEB VOR/DME and hold.
<p>For inop ALS, increase LPV visibility to 1¼ mile all Cats, increase LNAV Cats A/B visibility to 1 mile, and Cat C to 1¾ mile. When Circling to Rwy 29 at night, operational VGSI required, remain on or above VGSI glidepath until threshold. Rwy 4R helicopter visibility reduction below ¾ SM NA.</p>		

D-ATIS <b>115.7 134.825</b>	NEW YORK APP CON <b>128.55 379.9</b>	NEWARK TOWER <b>118.3 257.6</b>	GND CON <b>121.8</b>	CLNC DEL <b>118.85</b>	CPDLC
--------------------------------	---	------------------------------------	-------------------------	---------------------------	-------

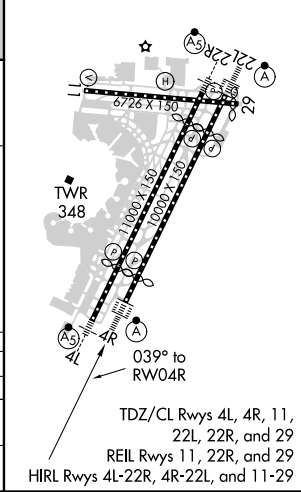


NE-2, 07 OCT 2021 to 04 NOV 2021

NE-2, 07 OCT 2021 to 04 NOV 2021



ELEV 17	D	TDZE 11
---------	---	---------



CATEGORY	A	B	C	D
LPV DA	357/40 346 (400-¾)			
LNAV MDA	660/40 649 (700-¾)	660/60 649 (700-1¼)		660-1½ 649 (700-1½)
CIRCLING	760-1 743 (800-1)	820-1 803 (900-1)	900-2¾ 883 (900-2¾)	900-3 883 (900-3)

# RNAV (GPS) Y RWY 4R