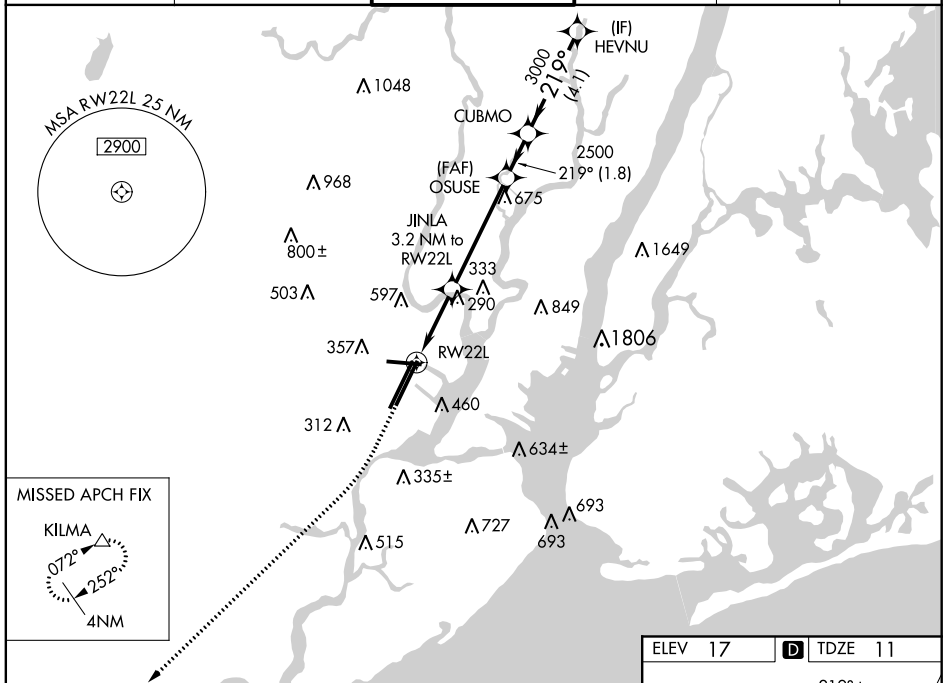


WAAS CH <b>70324</b> <b>W22A</b>	APP CRS <b>219°</b>	Rwy Idg <b>8207</b> TDZE <b>11</b> Apt Elev <b>17</b>
----------------------------------------	------------------------	-------------------------------------------------------------

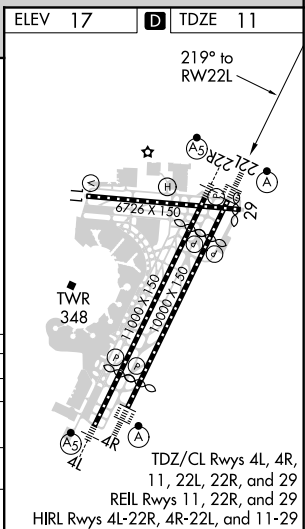
# RNAV (GPS) Z RWY 22L

NEWARK LIBERTY INTL (EWR)

RNP APCH.		NEWARK TOWER <b>118.3 257.6</b>		GND CON <b>121.8</b>	CLNC DEL <b>118.85</b>	CPDLC
⚠ For uncompensated Baro-VNAV systems, LNAV/VNAV NA below -13°C or above 54°C. For inop ALS, increase LNAV/VNAV all Cats visibility to 1½ mile. When Circling to Rwy 29 at night, operational VGSI required, remain on or above VGSI glidepath until threshold. ⚠ MISSED APPROACH: Climb to 600 then climbing right turn to 3000 direct KILMA and hold.				ALSF-2 		



600	3000	KILMA	VGSI and RNAV glidepath not coincident (VGSI Angle 3.00/TCH 60).
*LNAV only.			
RW22L	JINLA 3.2 NM to RW22L	OSUSE 2500	CUBMO HEVNU 3000
*1.5 NM to RW22L	*1.5 NM to RW22L	*1080	2500
GP 3.00° TCH 43			
1.5 NM	1.7 NM	4.5 NM	1.8 NM 4.1 NM
CATEGORY	A	B	C D
LPV DA		211/18	200 (200-½)
LNAV/VNAV DA		462/50	451 (500-1)
LNAV MDA	560/24	549 (600-½)	560/60 549 (600-1¼)
CIRCLING	760-1 743 (800-1)	820-1 803 (900-1)	900-2¾ 883 (900-2¾) 900-3 883 (900-3)



NE-2, 07 OCT 2021 to 04 NOV 2021

NE-2, 07 OCT 2021 to 04 NOV 2021