

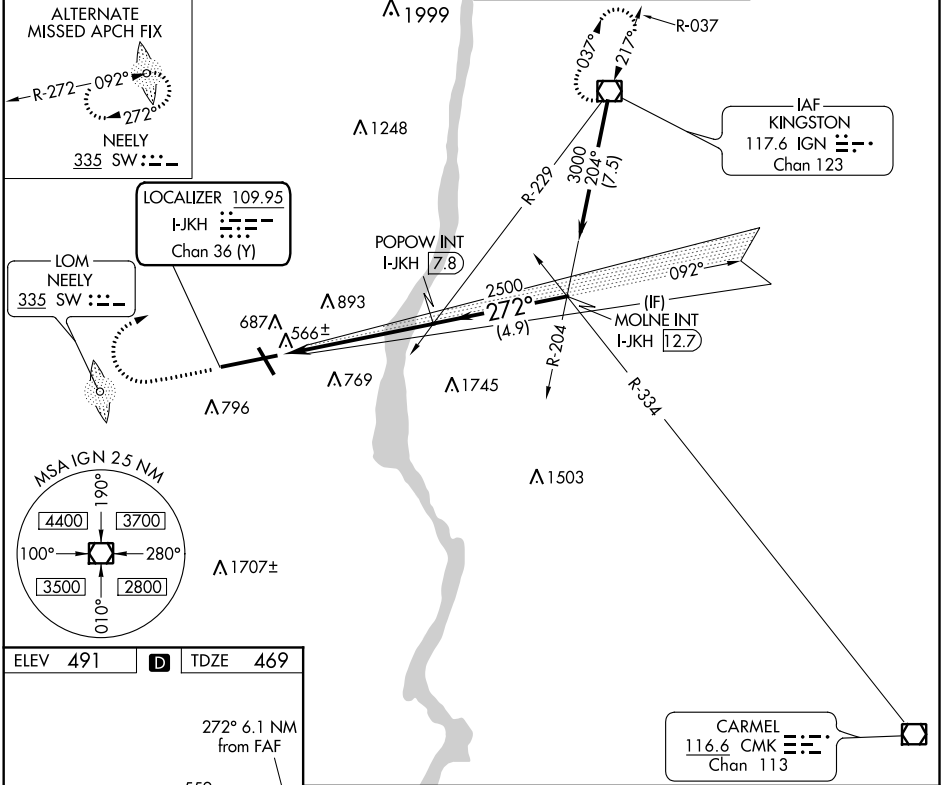
LOC/DME I-JKH <b>109.95</b> Chan 36 (Y)	APP CRS <b>272°</b>	Rwy Idg <b>9817</b> TDZE <b>469</b> Apt Elev <b>491</b>
---	------------------------	---

# ILS or LOC RWY 27

NEW YORK STEWART INTL (SWF)

<b>▽</b> <b>▲</b>	MISSED APPROACH: Climb to 1600 then climbing right turn to 3000 direct IGN VOR/DME and hold.
----------------------	--

ATIS <b>124.575</b>	NEW YORK APP CON <b>132.75 363.1</b>	STEWART TOWER <b>121.0 254.4</b>	GND CON <b>121.9</b>
------------------------	---	-------------------------------------	-------------------------



ELEV 491	<b>D</b>	TDZE 469
----------	----------	----------

TDZ/CL Rwy 9  
HIRL Rwy 9-27 and 16-34  
REIL Rwy 16, 27 and 34  
FAF to MAP 6.1 NM

Knots	60	90	120	150	180
Min:Sec	6:06	4:04	3:03	2:26	2:02

1600	3000	IGN	POPOW INT I-JKH 7.8	MOLNE INT I-JKH 12.7
* LOC only.			2500	Procedure Turn NA
			2500	GS 3.00° TCH 55
			1 NM	5.1 NM
			4.9 NM	
CATEGORY	A	B	C	D
S-ILS 27	719-1 250 (300-1)		840-1 371 (400-1 1/4)	
S-LOC 27	840-1 371 (400-1)		840-1 371 (400-1 1/4)	
<b>C</b> CIRCLING	1200-1 709 (800-1)		1200-2 709 (800-2)	
			1200-2 1/4 709 (800-2 1/4)	

NE-2, 07 OCT 2021 to 04 NOV 2021

NE-2, 07 OCT 2021 to 04 NOV 2021