

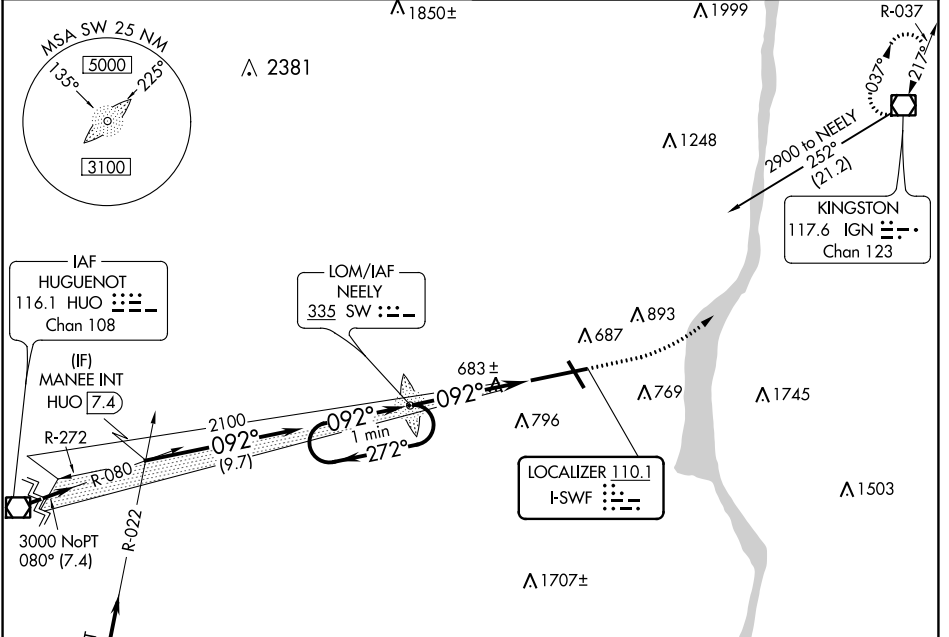
LOC I-SWF 110.1	APP CRS 092°	Rwy Idg 8817
		TDZE 482
		Apt Elev 491

ILS or LOC RWY 9

NEW YORK STEWART INTL (SWF)

	ALSIF-2	MISSED APPROACH: Climb to 1200 then climbing left turn to 3000 direct IGN VOR/DME and hold.

ATIS 124.575	NEW YORK APP CON 132.75 363.1	STEWART TOWER 121.0 254.4	GND CON 121.9
------------------------	---	-------------------------------------	-------------------------



One Minute Holding Pattern

SW LOM

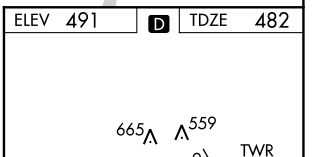
1200 3000 IGN

2300 272° 092° 2100 092°

GS 3.00° TCH 60

VGSI and ILS glidepath not coincident (VGSI Angle 3.00/TCH 65).

4.8 NM



One Minute Holding Pattern	SW LOM	1200	3000	IGN
2300	272°	092°	2100	092°
GS 3.00°	TCH 60	VGSI and ILS glidepath not coincident (VGSI Angle 3.00/TCH 65).		
4.8 NM				

CATEGORY	A	B	C	D
S-ILS 9	682/18 200 (200-½)			
S-LOC 9	940/24 458 (500-½)	940/50 458 (500-1)		
CIRCLING	1200-1 709 (800-1)	1200-2 709 (800-2)	1200-2¼ 709 (800-2¼)	

TDZ/CL Rwy 9	HIRL Rwy 9-27 and 16-34				
	REIL Rwy 16, 27 and 34				
	FAF to MAP 4.8 NM				
Knots	60	90	120	150	180
Min:Sec	4:48	3:12	2:24	1:55	1:36

NE-2, 07 OCT 2021 to 04 NOV 2021

NE-2, 07 OCT 2021 to 04 NOV 2021