

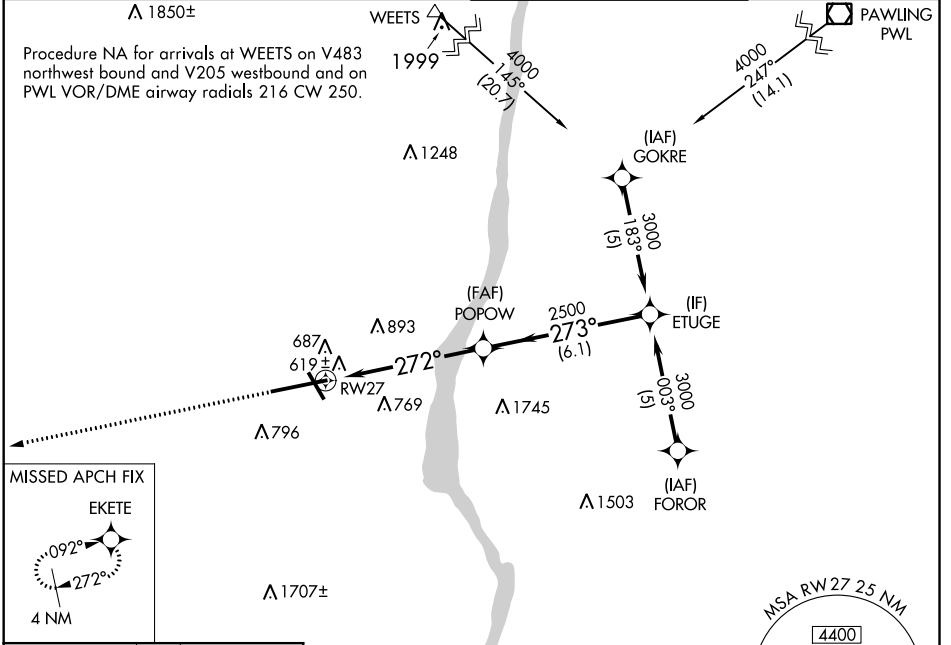
APP CRS Rwy Idg **9817**
272° TDZE **469**
 APt Elev **491**

RNAV (GPS) RWY 27
 NEW YORK STEWART INTL (SWF)

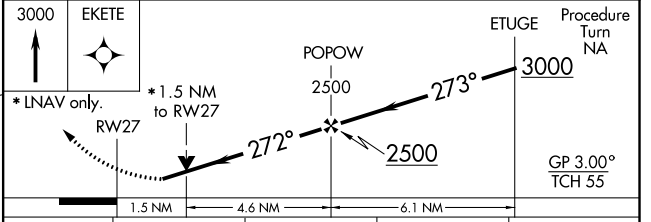
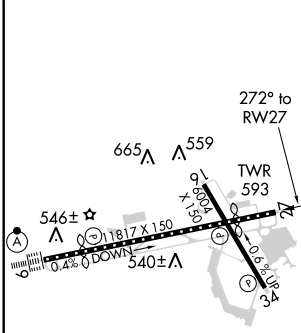
RNP APCH. MISSED APPROACH: Climb to 3000 direct EKETE and hold.

For uncompensated Baro-VNAV systems, LNAV/VNAV NA below -15°C or above 54°C.

ATIS 124.575	NEW YORK APP CON 132.75 363.1	STEWART TOWER 121.0 254.4	GND CON 121.9
------------------------	---	-------------------------------------	-------------------------



ELEV **491** D TDZE **469**



CATEGORY	A	B	C	D
LNAV/DA	1048-2 579 (600-2)			
LNAV MDA	1000-1 531 (600-1)	1000-1½ 531 (600-1½)	1000-1¾ 531 (600-1¾)	1000-1¾ 531 (600-1¾)
C CIRCLING	1200-1 709 (800-1)	1200-2 709 (800-2)	1200-2½ 709 (800-2½)	1200-2½ 709 (800-2½)

NE-2, 07 OCT 2021 to 04 NOV 2021

NE-2, 07 OCT 2021 to 04 NOV 2021