

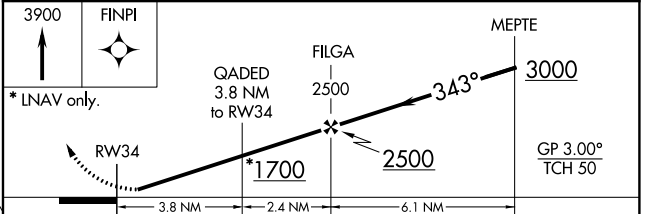
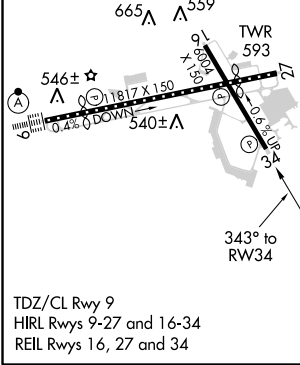
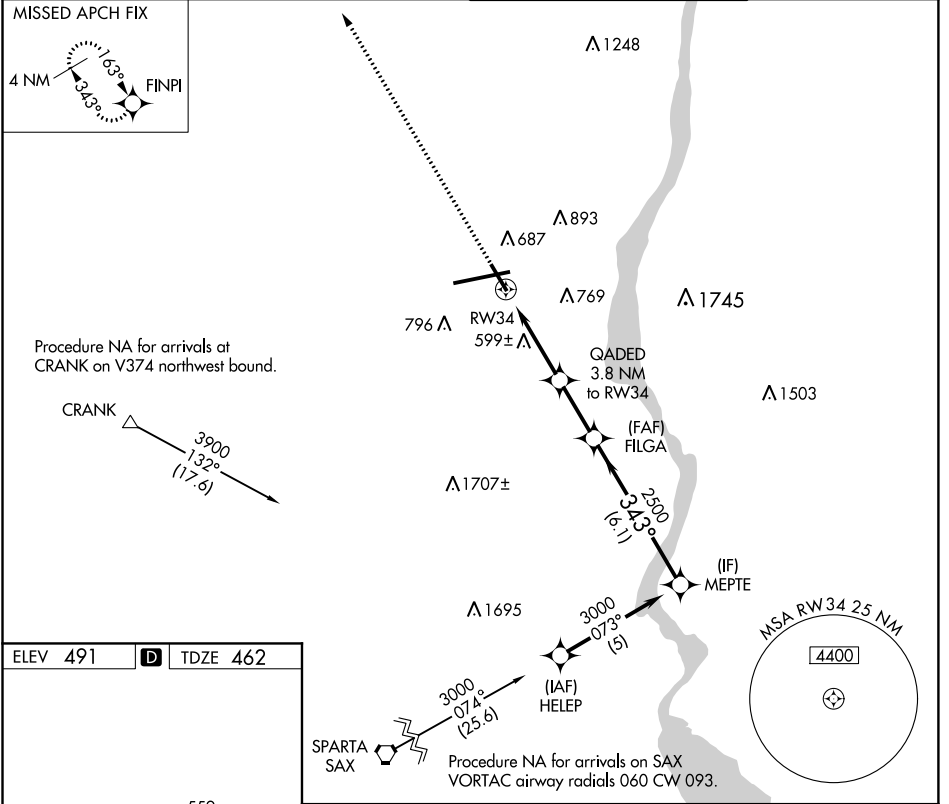
WAAS CH 90217 W34A	APP CRS 343°	Rwy Idg TDZE 462 Apt Elev 491	6004
--	------------------------	---	-------------

RNAV (GPS) RWY 34

NEW YORK STEWART INTL (SWF)

RNP APCH.	MISSED APPROACH: Climb to 3900 direct FINPI and hold.
Rwy 34 helicopter visibility reduction below 3/4 SM NA.	

ATIS 124.575	NEW YORK APP CON 132.75 363.1	STEWART TOWER 121.0 254.4	GND CON 121.9
------------------------	---	-------------------------------------	-------------------------



CATEGORY	A	B	C	D
LPV DA	737-1 275 (300-1)			
LNAV MDA	1020-1	558 (600-1)	1020-1½ 558 (600-1½)	1020-1¾ 558 (600-1¾)
CIRCLING	1200-1	709 (800-1)	1200-2 709 (800-2)	1200-2¼ 709 (800-2¼)

NE-2, 07 OCT 2021 to 04 NOV 2021

NE-2, 07 OCT 2021 to 04 NOV 2021