

# HI-ILS or LOC RWY 13

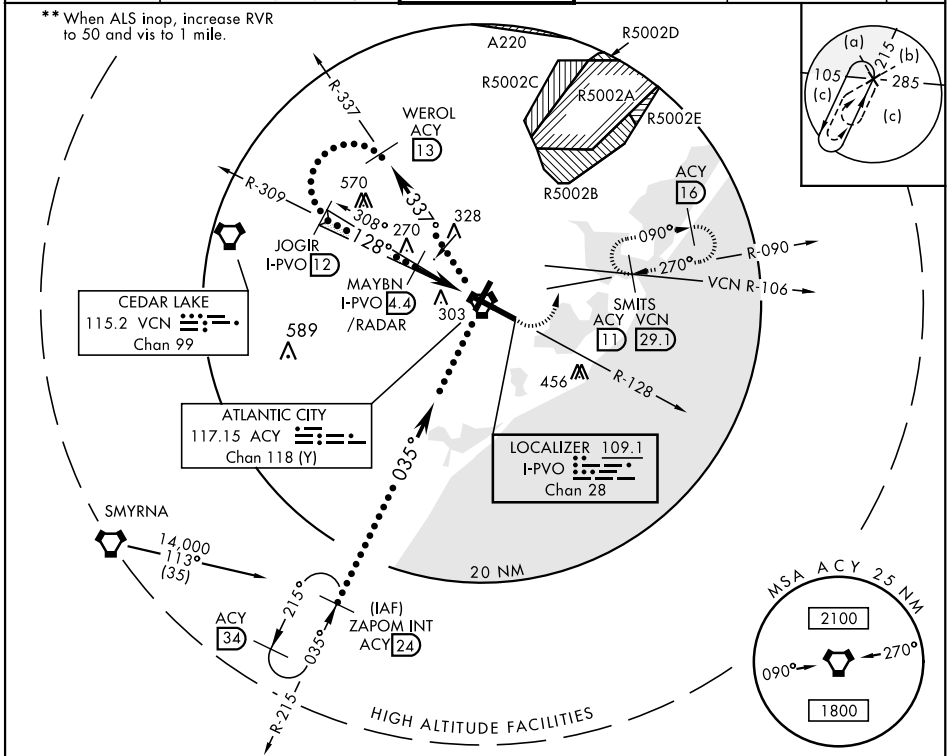
LOC/DME I-PVO <b>109.1</b> Chan <b>28</b>	APCH CRS <b>128°</b>	Rwy Idg TDZE Arprt Elev <b>10,000</b> <b>75</b> <b>75</b>
---	-------------------------	--

AL-669 [USAF]

ATLANTIC CITY INTL (KACY)

DME or RADAR required. **MALSR** MISSED APPROACH: Climb to 600 then climbing left turn to 2000 via ACY R-090 to SMITS INT/ACY 11 DME and hold; or when directed by ATC, climb to 600 then climbing left turn to 2000 via heading 076° and VCN R-106 to SMITS INT/VCN 29.1 DME and hold E, RT, hdg 286° inbound.

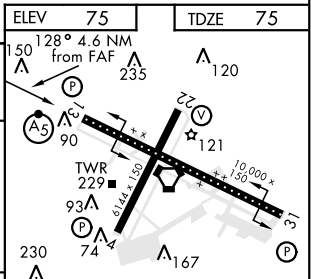
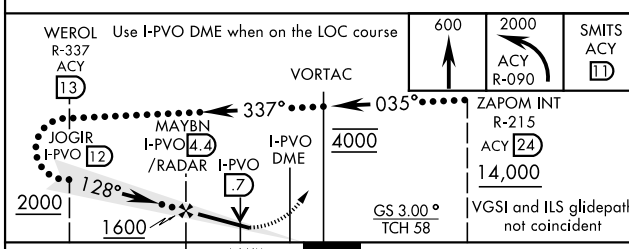
ATIS <b>125.725 316.15</b>	ATLANTIC CITY APP CON 130°-309° <b>124.6 327.125</b> 310°-129° <b>134.25 292.2</b>	ATLANTIC CITY TOWER <b>120.3 239.0</b>	GND CON <b>121.9 284.6</b>	CLNC DEL <b>127.85 353.775</b>	ASR
-------------------------------	--	---	-------------------------------	-----------------------------------	-----



NE-2, 07 OCT 2021 to 04 NOV 2021

NE-2, 07 OCT 2021 to 04 NOV 2021

EMERG SAFE ALT 100 NM 4200



WEROL R-337 ACY 13	Use I-PVO DME when on the LOC course		600	2000	SMITS ACY 11
JOGIR I-PVO 12	MAYBN I-PVO 4.4 /RADAR 7	I-PVO DME	4000	ZAPOM INT R-215 ACY 24	14,000
2000			GS 3.00° TCH 58	VGS1 and ILS glidepath not coincident	
1600			4.6 NM		

REIL Rwy 31	120	140	160	180	200
HIRL Rwy 4-22 and 13-31	2:18	1:58	1:43	1:32	1:23
TDZL/CL Rwy 13	FAF to MAP 4.6 NM				
Min:Sec	2:18	1:58	1:43	1:32	1:23

# HI-ILS or LOC RWY 13