

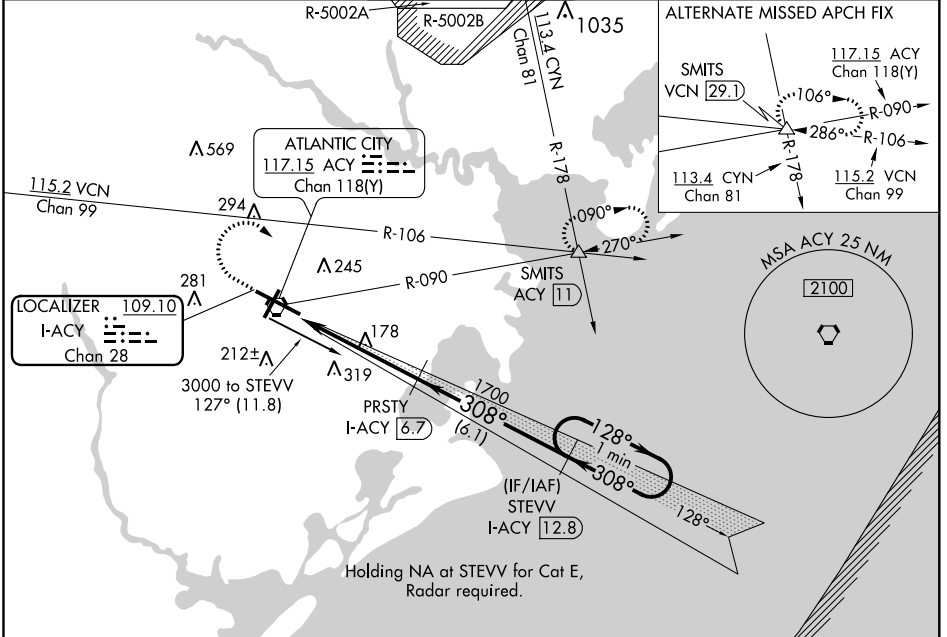
LOC/DME I-ACY	APP CRS	Rwy Idg	10000
<b>109.10</b>	<b>308°</b>	TDZE	<b>64</b>
Chan 28		Apt Elev	<b>75</b>

# ILS or LOC/DME RWY 31

ATLANTIC CITY INTL (ACY)

<p>ASR</p>	<p>MISSED APPROACH: Climb to 500 then climbing right turn to 2000 via heading 130° and via ACY R-090 to SMITS INT/ACY 11 DME and hold.</p>			
------------	--------------------------------------------------------------------------------------------------------------------------------------------	--	--	--

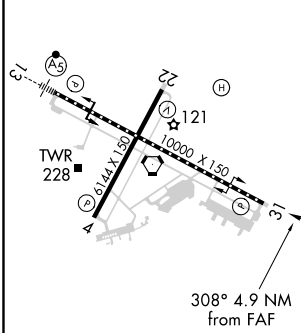
ATIS	ATLANTIC CITY APP CON	ATLANTIC CITY TOWER	GND CON	CLNC DEL
<b>125.725 316.15</b>	<b>124.6 327.125</b>	<b>120.3 239.0</b>	<b>121.9 284.6</b>	<b>127.85 353.775</b>



NE-2, 07 OCT 2021 to 04 NOV 2021

NE-2, 07 OCT 2021 to 04 NOV 2021

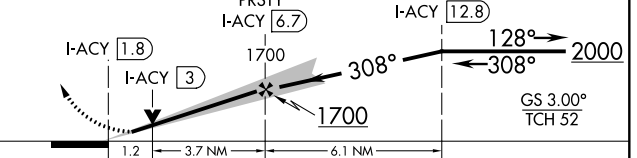
ELEV 75	<b>D</b>	TDZE 64
---------	----------	---------



TDZ/CL Rwy 13  
HIRL Rws 4-22 and 13-31  
REIL Rwy 31

## DME REQUIRED

500	2000	ACY R-090	SMITS	Use I-ACY DME when on localizer course. VGSI and ILS glidepath not coincident (VGSI Angle 3.00/TCH 69).	One Minute Holding Pattern



CATEGORY	A	B	C	D	E
S-ILS 31	264/40 200 (200-¾)				
S-LOC 31	520/50	456 (500-1)	520/60 456 (500-1¼)	520-1½	456 (500-1½)
CIRCLING	540-1 465 (500-1)	600-1 525 (600-1)	620-1½ 545 (600-1½)	640-2 565 (600-2)	760-2½ 685 (700-2½)