

|             |          |              |
|-------------|----------|--------------|
| APP CRS     | Rwy ldg  | <b>10000</b> |
| <b>308°</b> | TDZE     | <b>63</b>    |
|             | Apt Elev | <b>75</b>    |

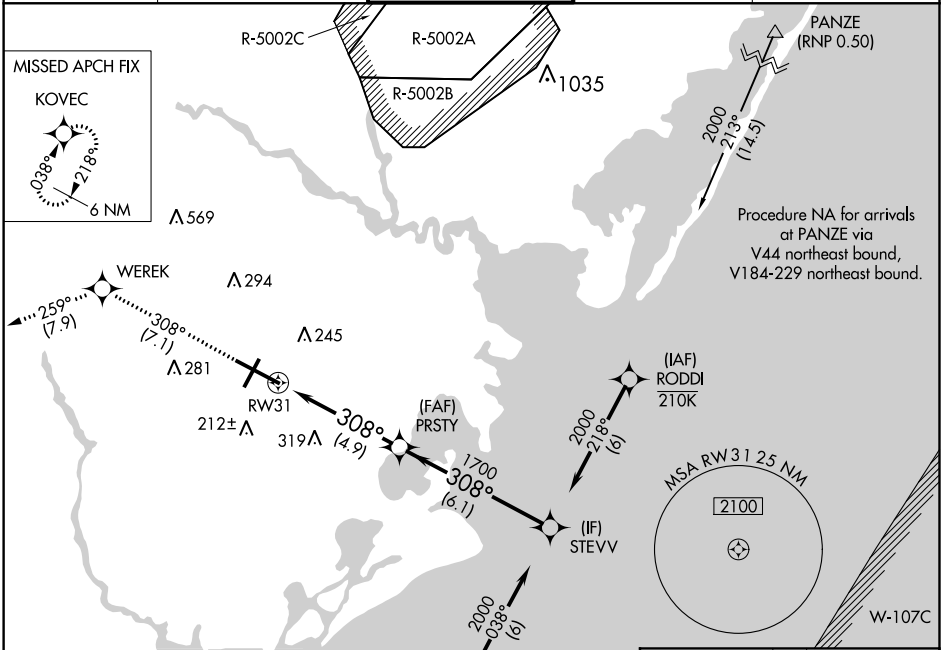
# RNAV (RNP) Z RWY 31

ATLANTIC CITY INTL (ACY)

**ASR** GPS Required. Procedure NA at night.  
 For uncompensated Baro-VNAV systems, procedure NA below -13°C (8°F) or above 54°C (130°F).

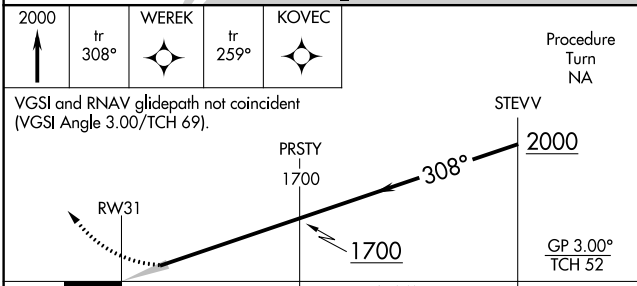
**MISSED APPROACH:** Climb to 2000 on track 308° to WEREK on track 259° to KOVEC and hold.

|                       |                       |                     |                    |                       |
|-----------------------|-----------------------|---------------------|--------------------|-----------------------|
| ATIS                  | ATLANTIC CITY APP CON | ATLANTIC CITY TOWER | GND CON            | CLNC DEL              |
| <b>125.725 316.15</b> | <b>124.6 327.125</b>  | <b>120.3 239.0</b>  | <b>121.9 284.6</b> | <b>127.85 353.775</b> |

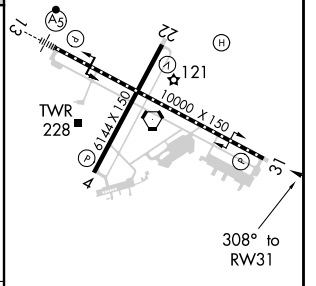


Procedure NA for arrivals on SIE VORTAC airway radials 333 CW 131.

Procedure NA for arrivals at PANZE via V44 northeast bound, V184-229 northeast bound.



|         |          |         |
|---------|----------|---------|
| ELEV 75 | <b>D</b> | TDZE 63 |
|---------|----------|---------|



|             |   |        |              |   |
|-------------|---|--------|--------------|---|
| CATEGORY    | A | B      | C            | D |
| RNP 0.30 DA |   | 408/60 | 345 (400-1¼) |   |

**AUTHORIZATION REQUIRED**

NE-2, 07 OCT 2021 to 04 NOV 2021

NE-2, 07 OCT 2021 to 04 NOV 2021